

RESIDENTIAL ZONED LAND SITE | 16.5 ACRES

16.5 ACRES NOTTINGHAM WOODS BLVD

PALMETTO, GA 30268

FOR SALE



PROPERTY HIGHLIGHTS

- 16.5 acres of land zoned R4C
- Offered for sale at \$450,000
- 96 partially developed town-home lots
- Parcel ID: 07-3101-0069-053-4
- Land partially cleared, very little grading needed
- Subdivision road in with base coat and first coat of asphalt
- All utilities including sanitation sewer are on site

LOCATION OVERVIEW

Palmetto is located 25 miles south of Atlanta on U.S. Highway 29 and on the Atlanta and West Point railroad.



RESIDENTIAL ZONED LAND SITE | 16.5 ACRES | Georgia | 10f3



PERRY HAYES | 404-876-1640 x135 | PHayes@BullRealty.com
BULLREALTY.COM

Information contained herein may have been provided by the seller, landlord or other outside sources. While deemed reliable, it may be estimated, projected, limited in scope and is subject to change or inaccuracies. Pertinent information should be independently confirmed prior to lease or purchase offer or within an applicable due diligence period.

RESIDENTIAL ZONED LAND SITE | 16.5 ACRES

16.5 ACRES NOTTINGHAM WOODS BLVD

PALMETTO, GA 30268

FOR SALE

DEMOGRAPHICS

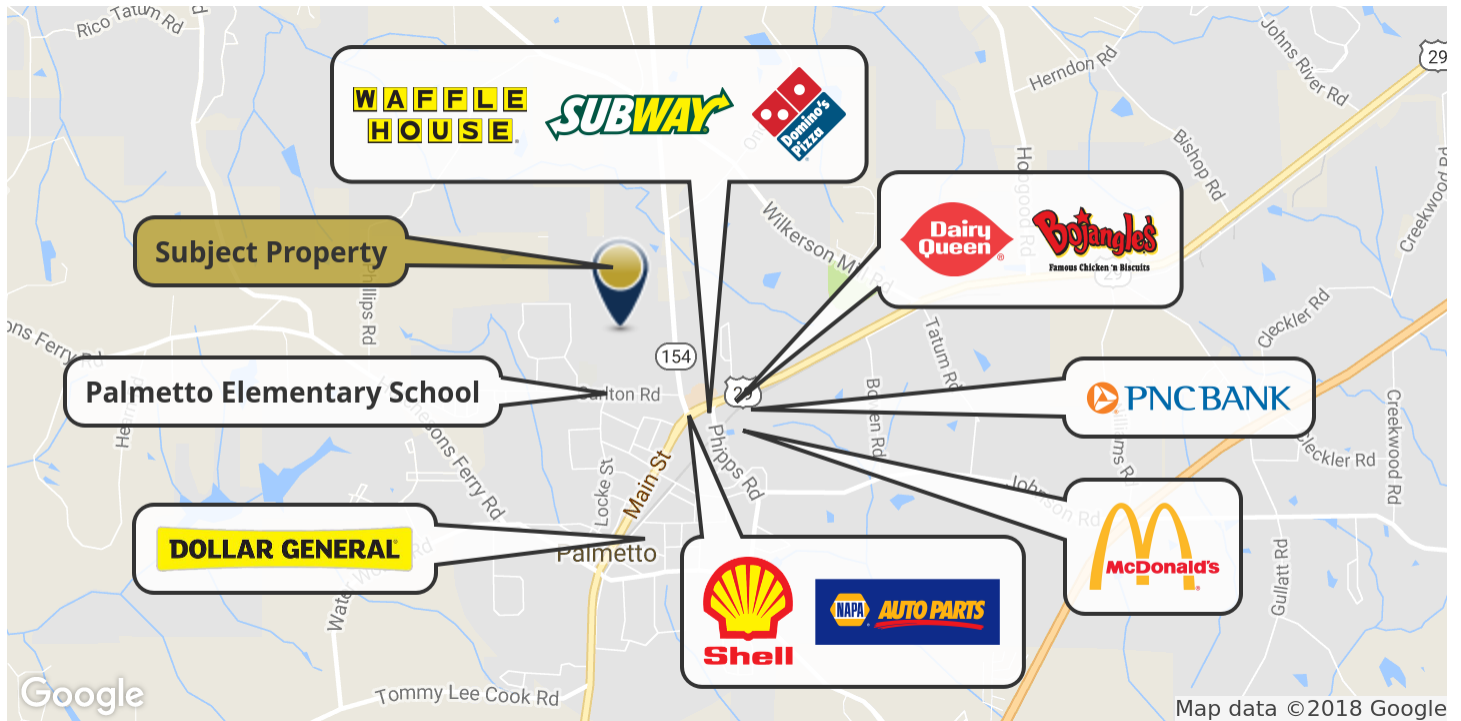
	1 Mile	3 Miles	5 Miles
Total Households:	1,034	2,697	9,824
Total Population:	2,928	7,466	27,453
Average HH Income:	\$73,017	\$73,363	\$81,440

*Data derived from ESRI

AERIAL



NEARBY RETAILERS



RESIDENTIAL ZONED LAND SITE | 16.5 ACRES | Georgia | 20f3



PERRY HAYES | 404-876-1640 x135 | PHayes@BullRealty.com
BULLREALTY.COM

Information contained herein may have been provided by the seller, landlord or other outside sources. While deemed reliable, it may be estimated, projected, limited in scope and is subject to change or inaccuracies. Pertinent information should be independently confirmed prior to lease or purchase offer or within an applicable due diligence period.

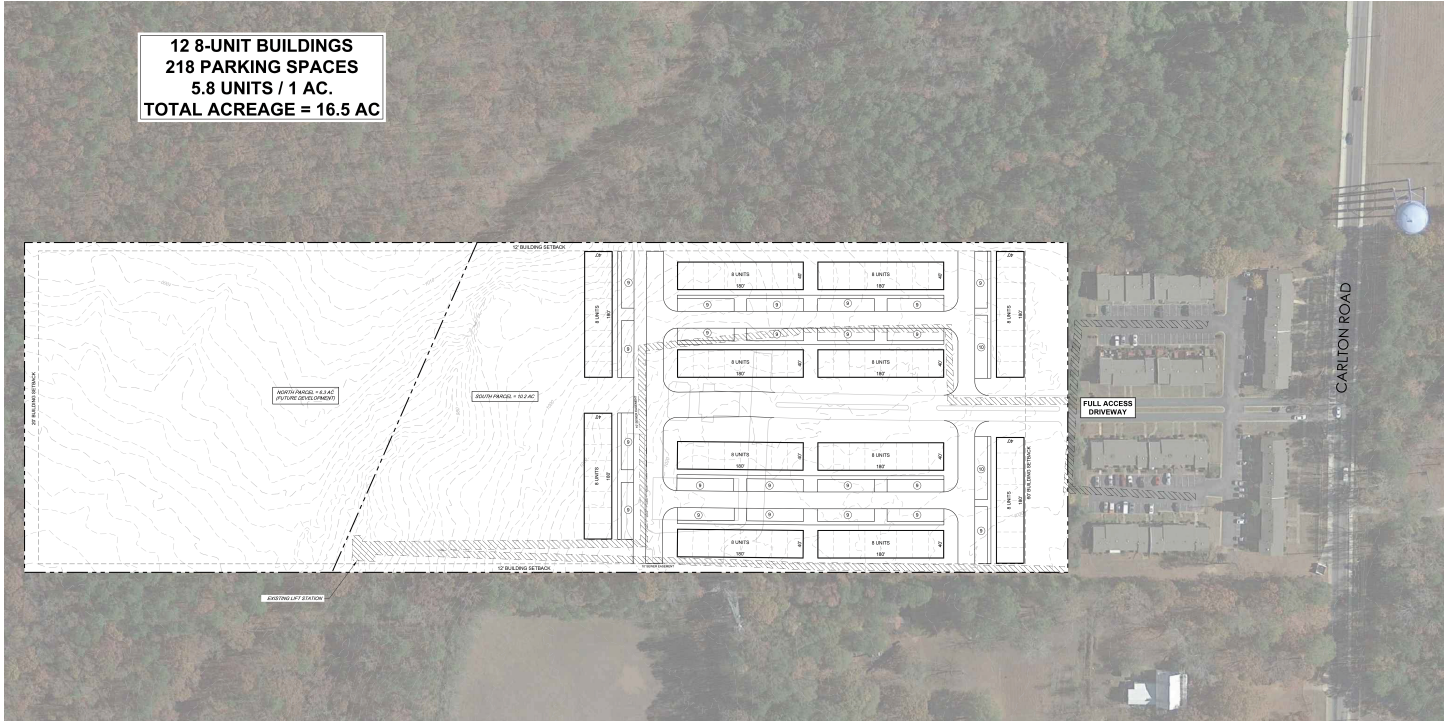
RESIDENTIAL ZONED LAND SITE | 16.5 ACRES

16.5 ACRES NOTTINGHAM WOODS BLVD

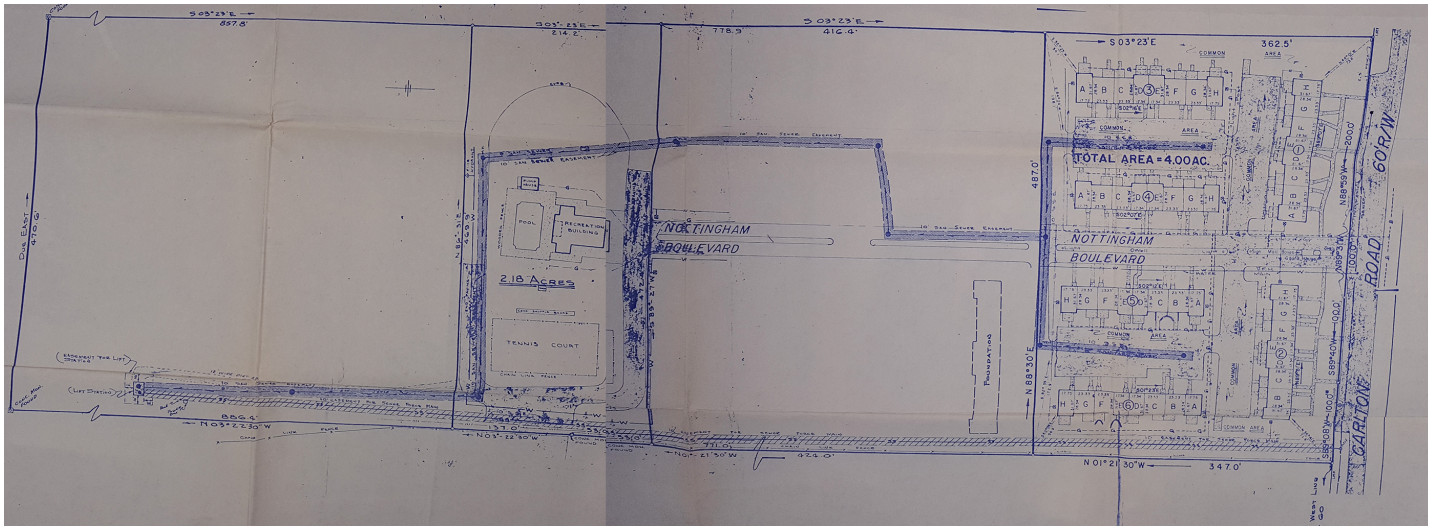
PALMETTO, GA 30268

FOR SALE

SITE PLAN



SURVEY



RESIDENTIAL ZONED LAND SITE | 16.5 ACRES | Georgia | 30f3



PERRY HAYES | 404-876-1640 x135 | PHayes@BullRealty.com
BULLREALTY.COM

Information contained herein may have been provided by the seller, landlord or other outside sources. While deemed reliable, it may be estimated, projected, limited in scope and is subject to change or inaccuracies. Pertinent information should be independently confirmed prior to lease or purchase offer or within an applicable due diligence period.