



STELLA GROUP REALTY INC

COMMERCIAL REAL ESTATE SERVICES



Property for Sale or Lease: **HIGHMARK**

Highmark Campus
(formerly Atlanta Christian College)
2605 Ben Hill Road, East Point, GA 30344

Presented by: Dr. Shirley A. Bettis, Ed. D – Realtor/CEO
404. 957.0274 Mobile
Lolethia A Chapman, JD MBA – Broker/President
678.456.2140 Mobile

1750 Lyle Avenue, College Park, GA 30337
404.767.2541 Office 404.952.1363 Fax

lchapman@stellagrouprealty.com
sabettis@stellagrouprealty.com
www.stellagrouprealty.com



STELLA GROUP REALTY INC

COMMERCIAL REAL ESTATE SERVICES



HIGHMARK

Property Summary

Located inside I-285 only 10 miles from downtown Atlanta is the campus of HighMark (formerly Atlanta Christian College). Situated on 47.30 serene acres in the pro-growth City of East Point, this campus offers everything an institution would need to thrive:

- **Institutional Facilities**

Five facilities on the campus are dedicated to institutional use. Most notable is a beautiful two story library. A recently renovated administration building and dormitories are also on the property.

- **Residential Facilities**

Twelve residential buildings are strategically located throughout the campus to provide convenient housing. A balanced mix of family-oriented housing, apartments, and dormitories are integrated into the campus, providing more than 270 beds.

- **Recreational Facilities**

The campus also includes indoor basketball arena with spectator bleachers, a sand volleyball court, two tennis courts, and a children's playground provide recreational opportunities.

- **Expansion Capabilities**

On the south side of the campus is 11.03 undeveloped acres for future expansion. While the property sits in a wooded setting surrounded by a residential community, local shopping and other forms of entertainment are only one mile away. The campus is very accessible, with many of Atlanta's major thoroughfares in close proximity to the property. Multiple MARTA bus stops are also convenient to the campus.

The information in this package has been obtained from sources believed reliable. While we do not doubt its accuracy we have not verified it and make no guarantee, warranty, or representation about it.



STELLA GROUP REALTY INC

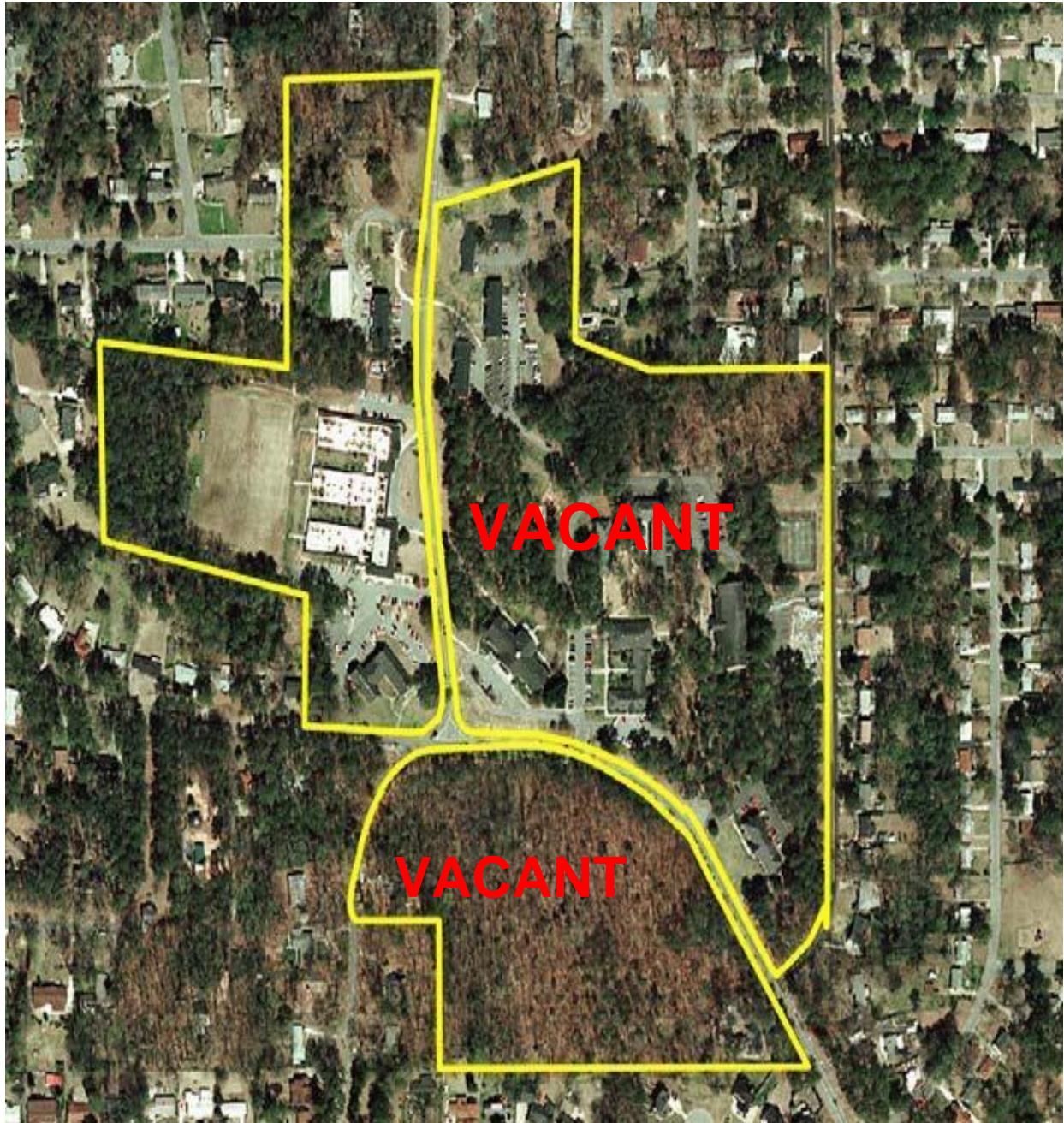
COMMERCIAL REAL ESTATE SERVICES

CAMPUS STATISTICS

- *Land Area: 40.30 Acres
- *Buildings: 13 Buildings
- *Total SF: 1077,732 SF
- *Classroom Facilities
- *Library
- *Administration Offices
- *Faculty Offices
- *Maintenance Shops
- *Dormitories (203 Beds)
- *Apartments (94 Beds)
- *Adult Housing (6 Units)
- *House
- *Indoor Basketball Court
- *2 Tennis Courts
- *Sand Volleyball Court
- *Children's Playground
- *Expansion Acreage (11.03 acres)



STELLA GROUP REALTY INC
COMMERCIAL REAL ESTATE SERVICES





STELLA GROUP REALTY INC

COMMERCIAL REAL ESTATE SERVICES



10,368 Sq. Ft Apt



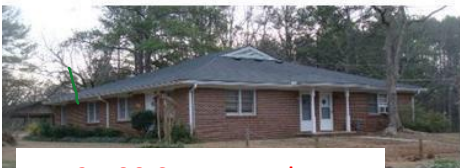
10,368 Sq. Ft Apt



2,100 Sq. Ft Apt



7,500 Sq. Ft Dorm



2,400 Sq. Ft Duplex



16,156 Sq. Ft. Dorm



2,400 Sq. Ft Duplex



8,363 Sq. Ft Gym & Apt



5,830 Sq. Ft Dorm



10,368 Sq. Ft Apt



10,500 Sq. Ft Dorm



2,021 Sq. Ft Duplex



STELLA GROUP REALTY INC

COMMERCIAL REAL ESTATE SERVICES

