



cRc Nationwide

COMMERCIAL REAL ESTATE CONSULTANTS

1515 SOUTH MAJOR STREET, SALT LAKE CITY 84115

SALT LAKE CITY WAREHOUSE FOR SALE



PROPERTY INFORMATION

- 9,738 SF Total: 3 Buildings
Can be Divided into 4-6 Separate Units
- BUILDING 1: 6,075 SF
Shop with Offices
(2) 8' x 10' GL Bay Doors
- BUILDING 2: 1,620 SF
Shop with Offices
(1) 15' x 10' Bay Door
- BUILDING 3: 1,581 SF
Retail/Shop Space
Potential 15' x 15' Bay Door
- Automotive/Warehouse Use
- Site Size: 0.40 Acres
- Brand New Roof
- 3 Phase Power
- Built in 1972
- Minutes to I-15

FINANCIAL INFORMATION

SALE PRICE REDUCED!!

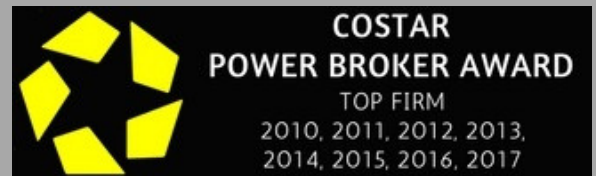
~~\$875,000.00~~ to \$795,000.00

* Seller Financing Possible *

Projected SBA

Price:	\$795,000.00
Down Payment:	\$100,000.00
Principal:	\$695,000.00
Interest:	5%
Amortization:	20 Years
Payments:	\$4,062.90/Month

* On Approved Credit *



801.617.1700

WEST HARADIN

WEST.HARADIN@CRCNATIONWIDE.COM



PAT BARTON

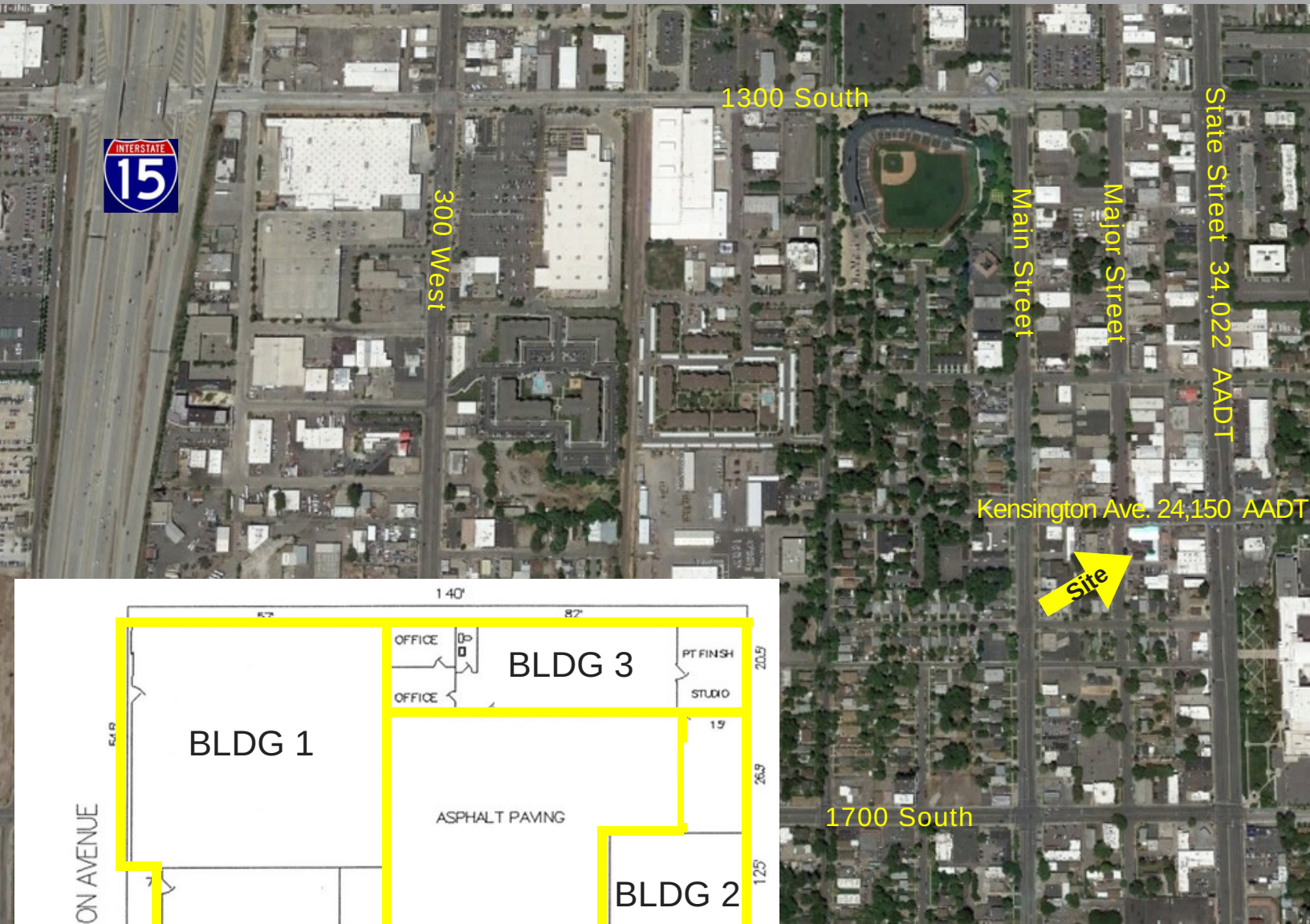
PAT.BARTON@CRCNATIONWIDE.COM



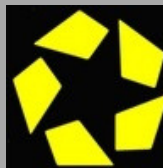
cRc Nationwide



1515 SOUTH MAJOR STREET, SALT LAKE CITY 84115



801.617.1700



**COSTAR
POWER BROKER AWARD**

TOP FIRM
2010, 2011, 2012, 2013,
2014, 2015, 2016, 2017

WEST HARADIN
WEST.HARADIN@CRCNATIONWIDE.COM

PAT BARTON
PAT.BARTON@CRCNATIONWIDE.COM