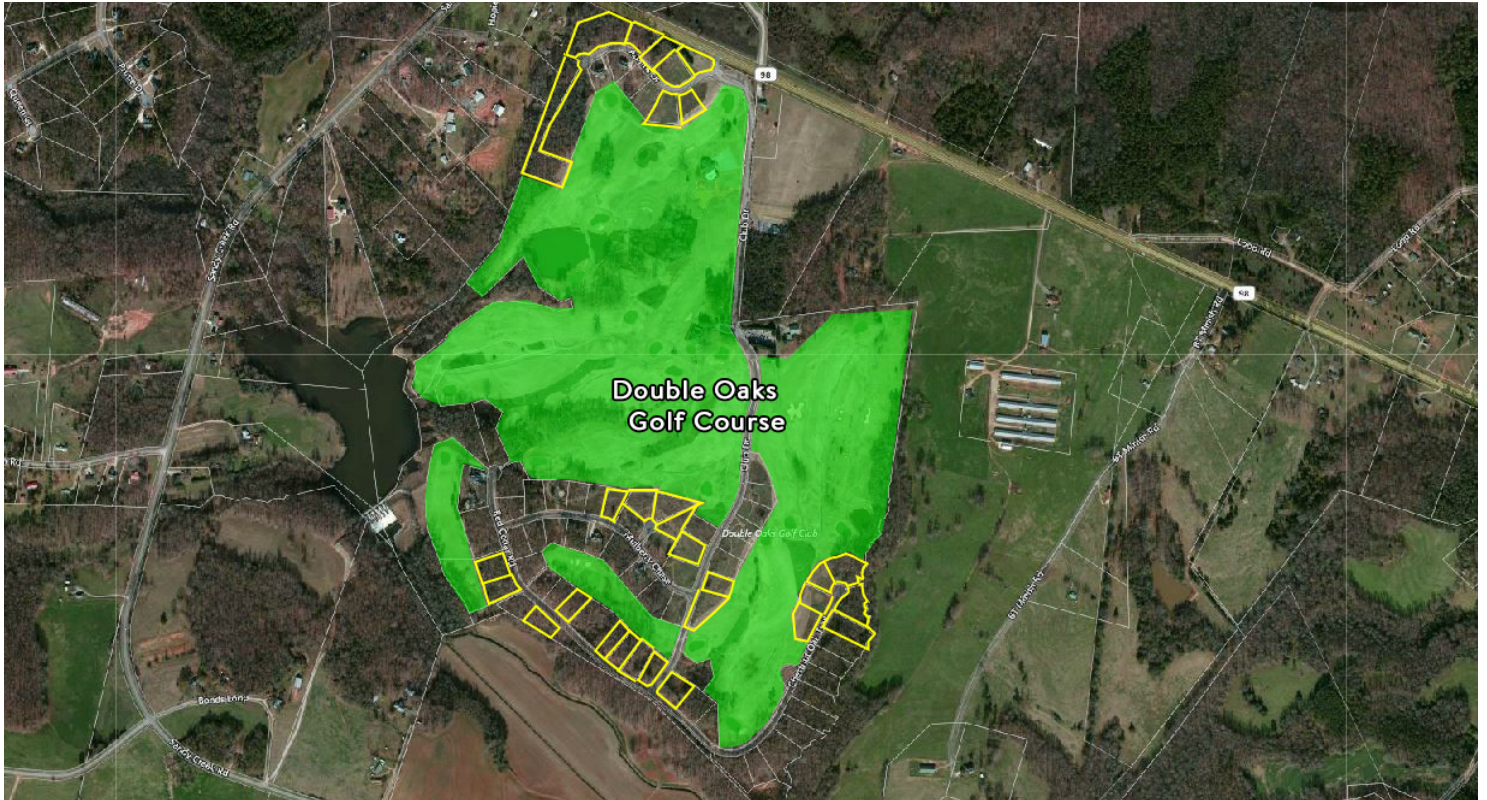


30 FULLY DEVELOPED RESIDENTIAL LOTS IN DOUBLE OAKS GOLF CLUB

3100 ILA ROAD
COMMERCE, GA 30530

FOR SALE

30 FULLY DEVELOPED RESIDENTIAL LOTS IN DOUBLE OAKS GOLF CLUB | Georgia | 10f3



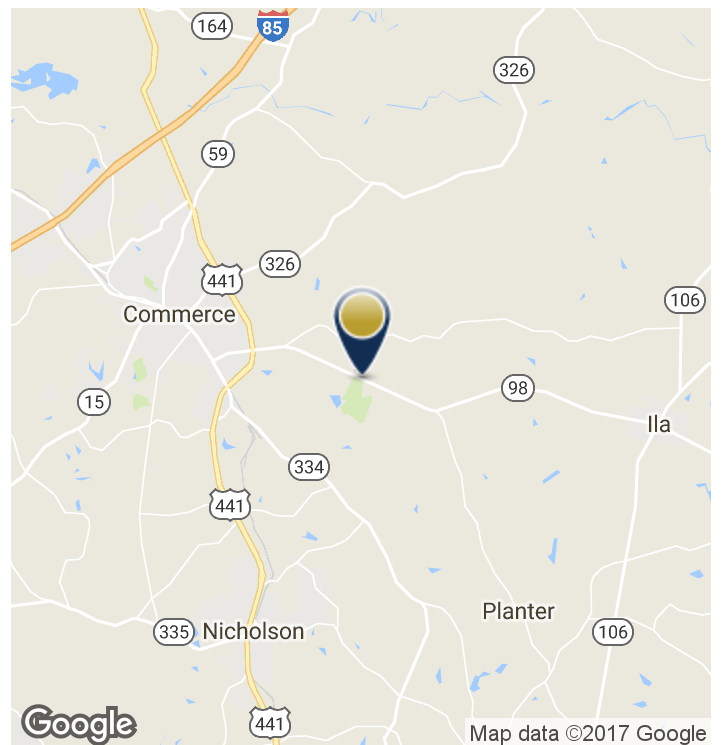
PROPERTY HIGHLIGHTS

- 30 fully developed residential lots zoned R1
- Offered for sale at \$1,350,000 (\$45,000/lot)
- 24.24 acres total
- Includes all underground utilities
- For a list of the largest employers, visit: <http://ow.ly/IR1k30gELEp>

LOCATION OVERVIEW

Located in Double Oaks Golf Club.

Less than four miles from large Toyota plant. Less than five miles from I-85, downtown Commerce and largest employers in the county. Less than twenty miles from Athens, GA.



RICK BLUMENFELD | 404-876-1640 x173 | RBlumenfeld@BullRealty.com
BULLREALTY.COM

Information contained herein may have been provided by the seller, landlord or other outside sources. While deemed reliable, it may be estimated, projected, limited in scope and is subject to change or inaccuracies. Pertinent information should be independently confirmed prior to lease or purchase offer or within an applicable due diligence period.

30 FULLY DEVELOPED RESIDENTIAL LOTS IN DOUBLE OAKS GOLF CLUB

3100 ILA ROAD
 COMMERCE, GA 30530

FOR SALE

2017 DEMOGRAPHICS

	3 Miles	5 Miles	10 Miles
Total Households:	1,242	4,778	13,384
Total Population:	3,298	12,850	37,246
Average HH Income:	\$53,536	\$56,064	\$57,488

*Data derived from ESRI

PHOTO



AERIAL



30 FULLY DEVELOPED RESIDENTIAL LOTS IN DOUBLE OAKS GOLF CLUB | Georgia | 20f3



RICK BLUMENFELD | 404-876-1640 x173 | RBlumenfeld@BullRealty.com
BULLREALTY.COM

Information contained herein may have been provided by the seller, landlord or other outside sources. While deemed reliable, it may be estimated, projected, limited in scope and is subject to change or inaccuracies. Pertinent information should be independently confirmed prior to lease or purchase offer or within an applicable due diligence period.

AVAILABLE LOTS

TAX ID	ACERAGE
001A-001A	0.64
001A-003A	0.68
001A-004A	0.62
001A-002A	0.8
001A-005A	1.95
001A-023C	0.83
001A-010B	0.79
001A-017B	1.0
001A-018B	0.87
001A-001C	0.6
001A-002D	0.61
001A-003D	0.61
001A-004D	0.6
001A-005D	0.66
001A-008B	0.74
001A-013B	0.84
001A-014B	0.63
001A-015B	0.6
001A-016B	0.98
001A-003C	0.65
001A-004C	0.73
001A-006A	2.32
001A-012A	0.76
001A-013A	0.84
001A-007B	0.61
001A-016C	0.63
001A-018C	0.6
001A-019C	0.74
001A-020C	0.72
001A-001D	0.59

