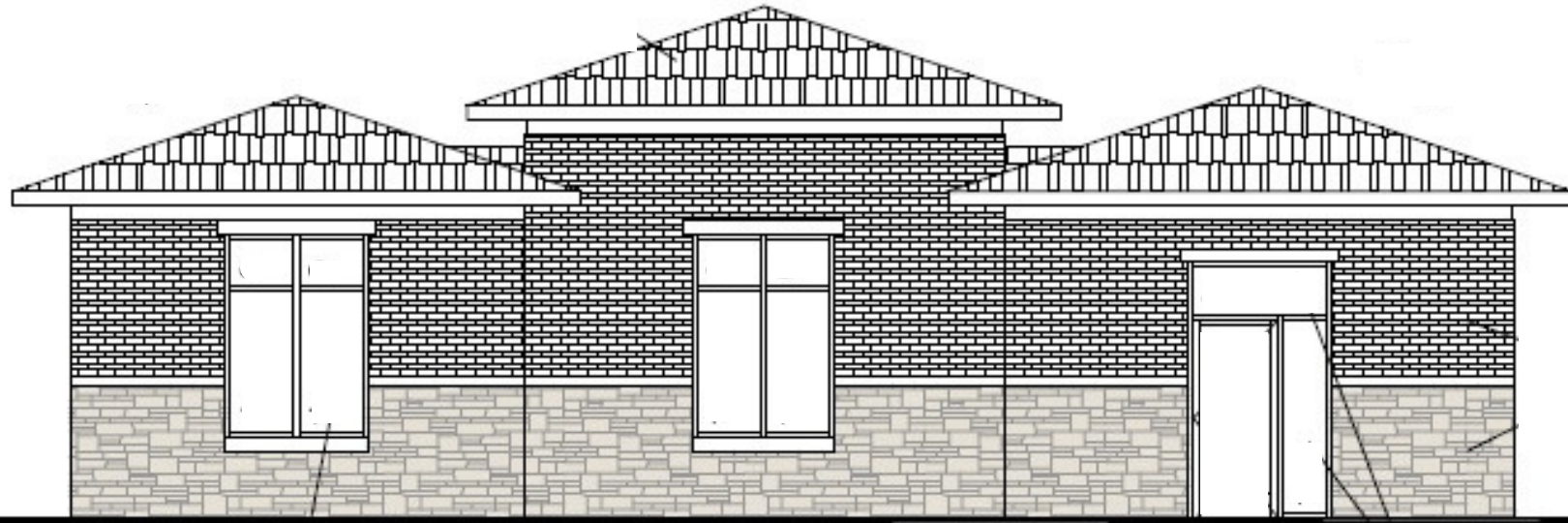




# CRC NATIONWIDE

67 EAST 11000 SOUTH, SANDY, UTAH 84070

## SANDY OFFICE BUILDING FOR SALE



- 1,750 SF PROPOSED OFFICE BUILDING
- BUILDING PLANS ARE PRE MADE AND APPROVED
- PRICE INCLUDES CLASS A FINISHES
- SITE SIZE: 0.18 ACRES
- ZONING: LC (LIGHT COMMERCIAL)
- JUST OFF STATE STREET
- NEAR SOUTH TOWNE MALL AND SANDY AUTO MALL
- PRIME SANDY LOCATION
- MINUTES TO I-15 FREEWAY ACCESS

**SALE PRICE REDUCED!!**

~~\$750,000.00~~

**\$550,000.00**

### DEMOGRAPHICS

	1 MILE	3 MILE	5 MILE
TOTAL POPULATION	11,921	96,613	263,742
TOTAL HOUSEHOLDS	4,064	31,253	82,813
AVG. HOUSEHOLD INCOME	\$78,583	\$82,408	\$84,568

### TRAFFIC COUNTS

State Street: 28,215 ANNUAL AVERAGE DAILY TRAFFIC

11000 South: 9,065 ANNUAL AVERAGE DAILY TRAFFIC

**801.617.1700**

KELLEN KONCAR

KELLEN.KONCAR@CRCNATIONWIDE.COM

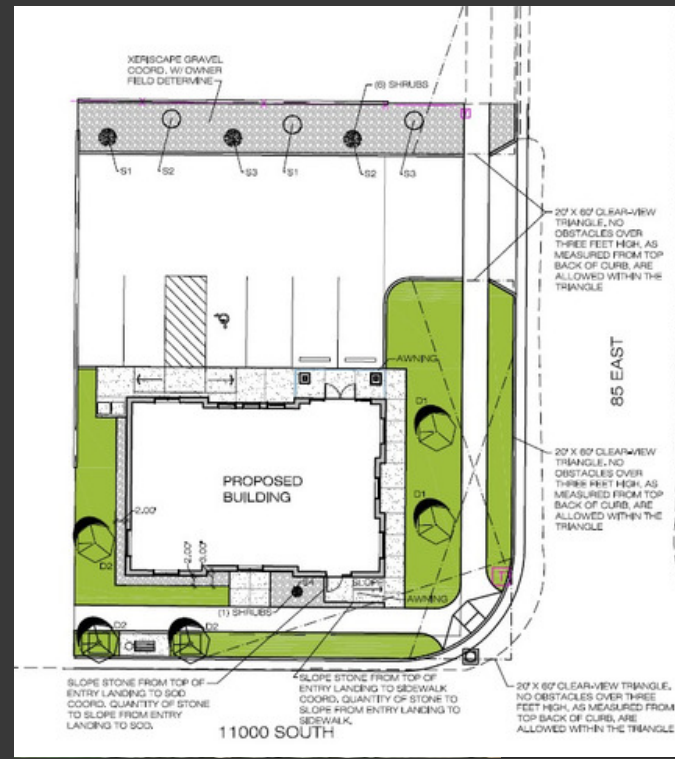
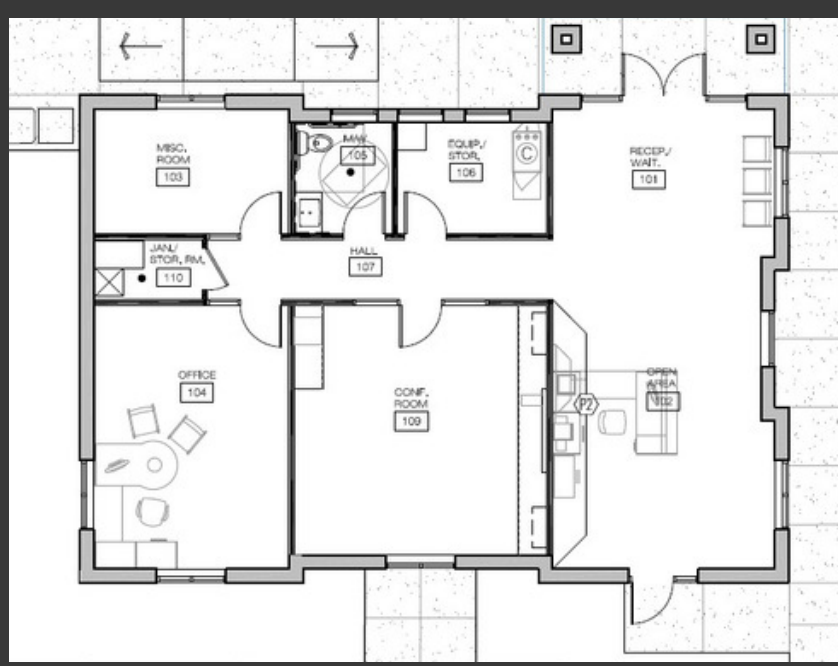
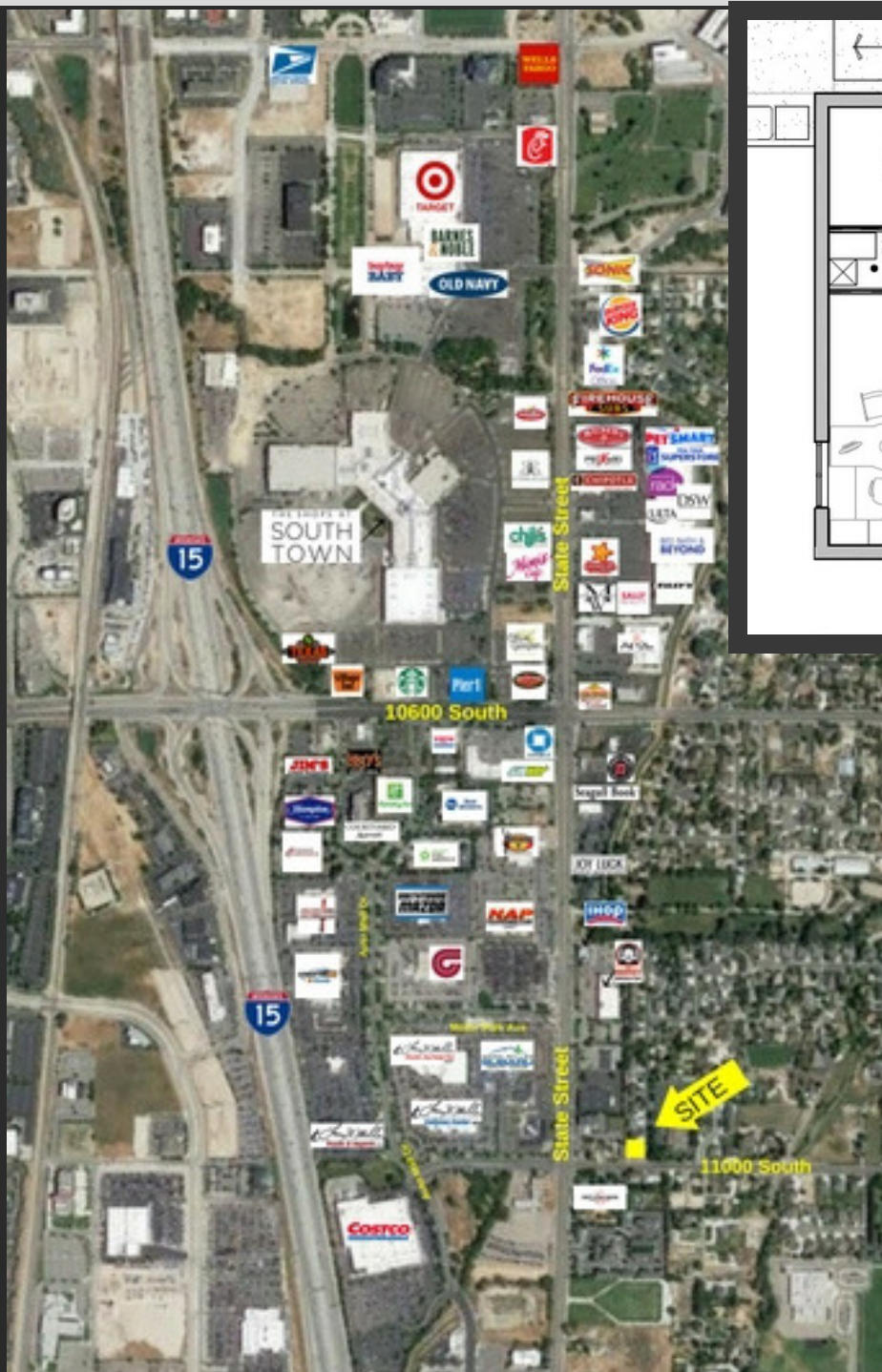


**COSTAR**  
**POWER BROKER AWARD**  
 TOP FIRM IN SALES & LEASING  
 2010, 2011, 2012, 2013, 2014, 2015, 2016



# cRc Nationwide

67 EAST 11000 SOUTH, SANDY, UTAH 84070



801.617.1700

KELLEN KONCAR  
kellen.koncar@crcnationwide.com



COSTAR  
POWER BROKER AWARD  
TOP FIRM IN SALES & LEASING  
2010, 2011, 2012, 2013, 2014, 2015, 2016