



cRc Nationwide

COMMERCIAL REAL ESTATE CONSULTANTS



SANDY OFFICE SUITE FOR SALE

8915 SOUTH 700 EAST, SANDY, UTAH 84070



PROPERTY INFORMATION

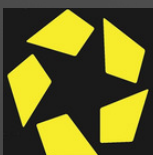
- Suite 102: 3,265 SF
- Class A Finishes
- (2) Covered Parking Stalls
- Building and Monument Signage Available
- High Traffic Counts
- Great Sandy Location with Many Amenities Nearby
- Ample Parking: 5/1,000 SF
- Minutes From I-15 Access

FINANCIAL INFORMATION

- Own for \$3,535.00/Month!!
- Financed Through SBA with 10% Down at 5% Interest, Amortized Over 20 Years
- Comparable to a \$13.00/SF Lease Rate!!

SALE PRICE: \$595,000.00

801.617.1700



COSTAR
POWER BROKER AWARD
TOP FIRM IN SALES & LEASING
2010, 2011, 2012, 2013, 2014, 2015, 2016

KELLEN KONCAR

KELLEN.KONCAR@CRCNATIONWIDE.COM

GREG MCDONALD

GREG.MCDONALD@CRCNATIONWIDE.COM



cRc Nationwide

COMMERCIAL REAL ESTATE CONSULTANTS



8915 SOUTH 700 EAST, SANDY, UTAH 84070

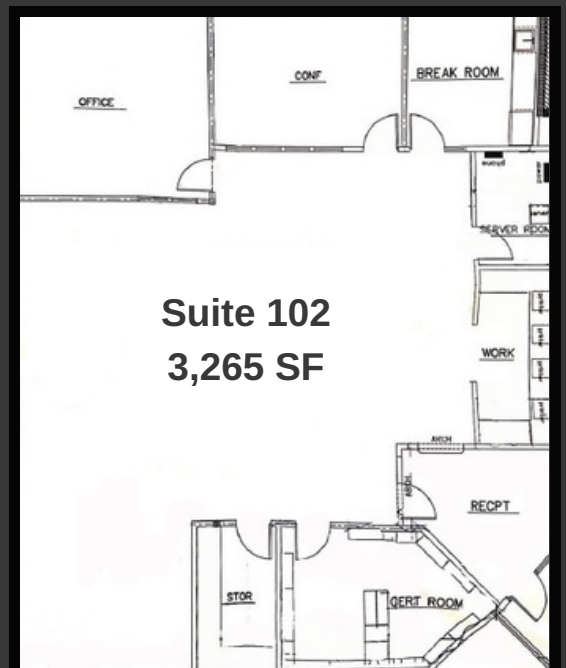


Demographics

Traffic Counts

	1 Mile	3 Mile	5 Mile
Population	16,548	131,498	296,450
Households	5,830	46,130	102,293
Avg. Household Income	\$67,375	\$69,692	\$76,670

700 East: 34,980 Annual Average Daily Traffic
 9000 South: 39,467 Annual Average Daily Traffic



KELLEN KONCAR
 KELLEN.KONCAR@CRCNATIONWIDE.COM

801.617.1700

GREG MCDONALD
 GREG.MCDONALD@CRCNATIONWIDE.COM