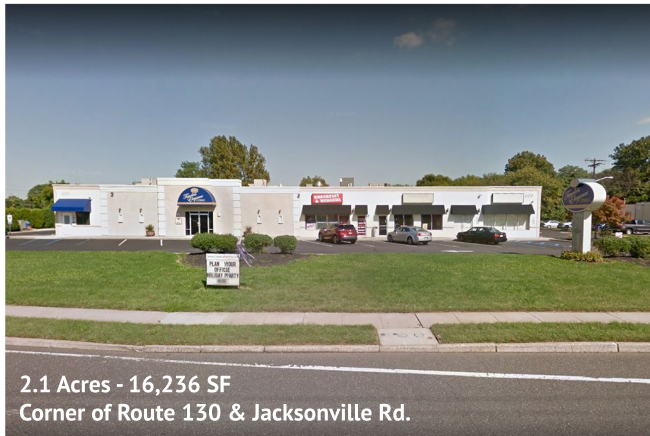




REAL ESTATE AUCTION: RETAIL STRIP CENTER

Burlington County, New Jersey



2.1 Acres - 16,236 SF
Corner of Route 130 & Jacksonville Rd.



Catering Facility & (3) Income-Producing Retail Spaces

600 Jacksonville Road, Burlington, NJ 08016

**Teleconference Auction Sale: Friday, September 15 at 10:00 AM.
Visit Comly.com for more information and to download a bid kit.**



1825 E. Boston St. • Philadelphia, PA 19125-1296
(215) 634-2500 • Fax (215) 634-0496 • Toll Free 1 (800) 883-2665
Email: auctions@comly.com • Website: comly.com



PA Auctioneers License #AY-000148-L
Andrew J. Comly – Real Estate Broker #RM048810A

REAL ESTATE AUCTION

Retail Strip Center - 16,236 SF Burlington County, NJ

PRESORTED
FIRST CLASS
US POSTAGE
PAID
CARLE PLACE, NY
PERMIT NO. 35

TELECONFERENCE AUCTION SALE
Friday, September 15 at 10:00 AM

Current Home of:



(2) Halls (80 & 250-Guest Capacity)
Warehouse, Office & Fully-Equipped Kitchen
(3) Income-Producing Retail Spaces
& (80) Parking Spaces

Parcel #: 221-3.02
Zoning: Industrial
Lot Size: 2.10 Acres
Taxes: \$28,318

Contact Auction Office to schedule
a property preview: 215-634-2500.

Visit Us at Comly.com