

**For Sale - Land**  
**5.735 Acres**  
**501 & 551 Spring Valley Rd**



**Asking Price: \$550,000**  
**(\$2.20 psf)**

**Approx. 5.735 Acres (249,816 sf)**  
**City of Hewitt (76643)**

**Zoning ~ C-O Commercial Outdoor**

**Easy Access To I-35**

**Access to water and sewer**  
**(City of Hewitt)**

**Raynor Campbell (Agent) ~ Reid Peevey Commercial Real Estate ~ 2420 Wycon, Suite 301 Waco, TX 76712**  
**(254) 664-1838 (cell) ~ (254)752-9500 ~ raynor@reidpeevey.com**

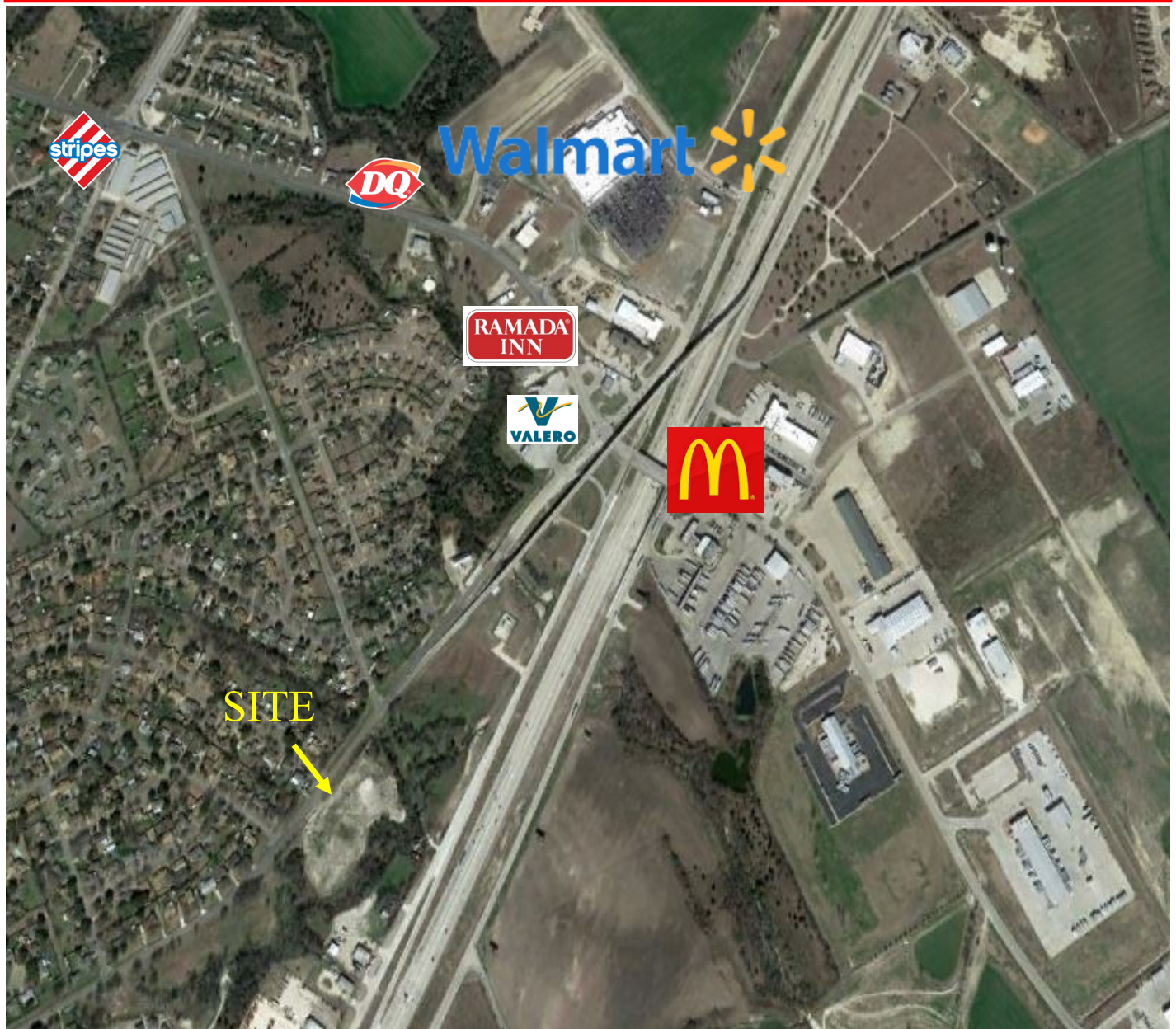


**REIDPEEVEY.COM**

The information contained herein is derived from sources deemed reliable, but no warranty or representation is made or assumed for the accuracy thereof and the same is submitted subject to errors, omissions, change of price, rental or other conditions prior to sale or lease or withdrawal without notice. In accordance with the law, this property is offered without respect to race, color, creed, sex, national origin, physical or familial status.

2420 Wycon Drive, Suite 301 • Waco, TX 76712 • Phone (254)752-9500

# Aerial View & Surrounding Businesses



The information contained herein is derived from sources deemed reliable, but no warranty or representation is made or assumed for the accuracy thereof and the same is submitted subject to errors, omissions, change of price, rental or other conditions prior to sale or lease or withdrawal without notice. This property is offered without respect to race, color, creed, sex, national origin, physical or familial status.

