



cRc Nationwide

COMMERCIAL REAL ESTATE CONSULTANTS



1017 SOUTH MAIN STREET, SALT LAKE CITY, UTAH 84111



MAJOR PRICE REDUCTION!!

- 3,797 SF Free Standing Building
- Office/Retail/Automotive Use
- 0.16 Acres
- (4) Bay Doors
- Large Paved Parking Area in Back
- Historic and Unique Aesthetics
- New Bay Doors, Windows and Entry Door
- Fiber Possibility
- Main Street Frontage
- Easy Access to I-15

SALE PRICE REDUCED!

~~\$555,000.00~~
~~\$515,000.00~~
~~\$510,000.00~~
\$499,999.00

Demographics

	1 Mile	3 Mile	5 Mile
Population	14,889	145,659	284,470
Households	6,773	61,318	110,603
Avg. Household Income	\$31,496	\$46,038	\$48,210

Traffic Counts

Main Street: 19,449 Annual Average Daily Traffic
 State Street: 39,064 Annual Average Daily Traffic

801.617.1700

WEST HARADIN

WEST.HARADIN@CRCNATIONWIDE.COM



**COSTAR
 POWER BROKER AWARD
 TOP FIRM IN SALES & LEASING
 2010, 2011, 2012, 2013, 2014, 2015, 2016**

PAT BARTON

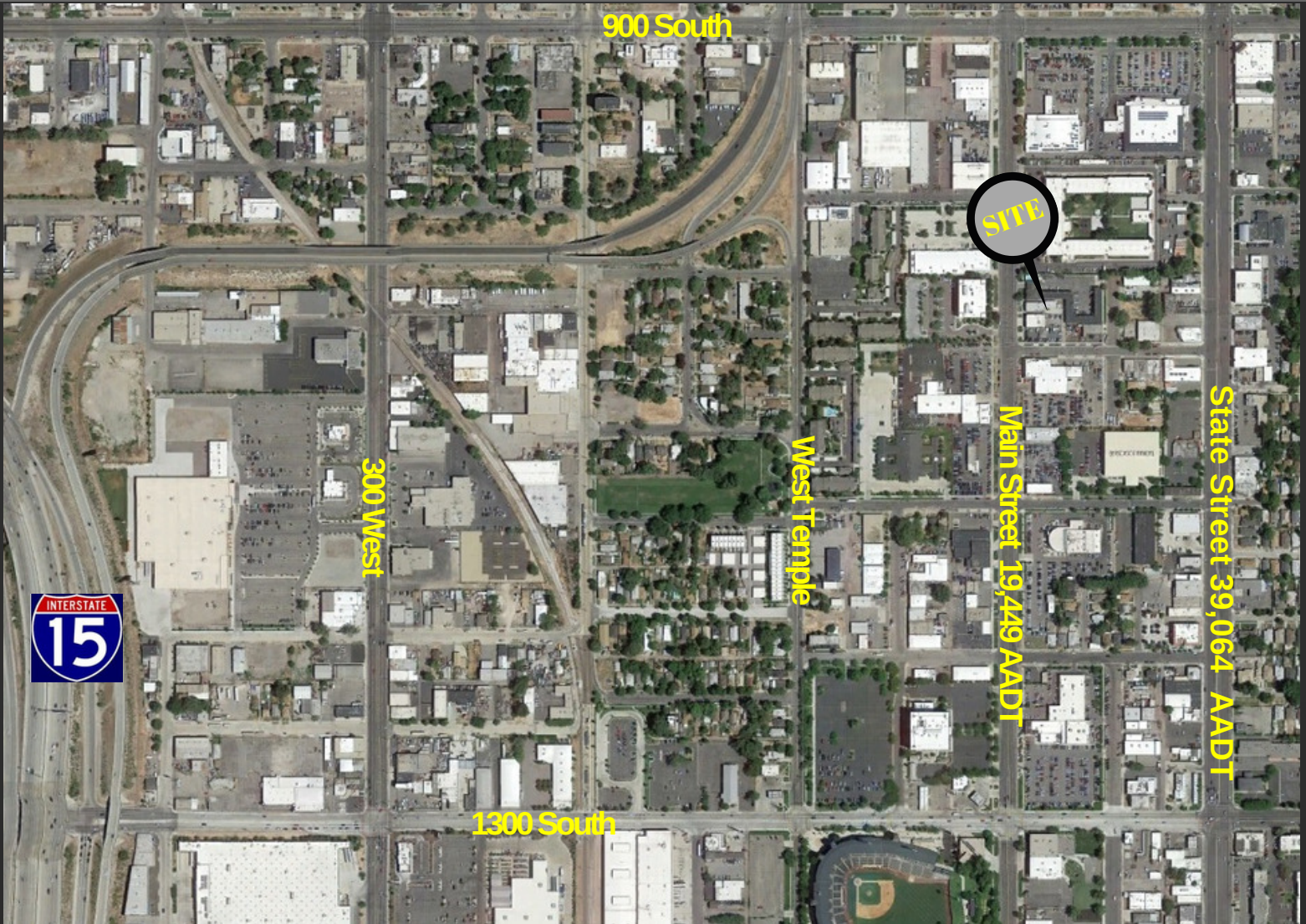
PAT.BARTON@CRCNATIONWIDE.COM



cRc Nationwide

COMMERCIAL REAL ESTATE CONSULTANTS

1017 SOUTH MAIN STREET, SALT LAKE CITY, UTAH 84111



801.617.1700

WEST HARADIN
WEST.HARADIN@CRCNATIONWIDE.COM



COSTAR
POWER BROKER AWARD
TOP FIRM IN SALES & LEASING
2010, 2011, 2012, 2013, 2014, 2015, 2016

PAT BARTON
PAT.BARTON@CRCNATIONWIDE.COM