

H & H REALTY, LLC

Your Success is our Business



Commercial and Industrial Real Estate Services

1-25 ACRES FOR SALE

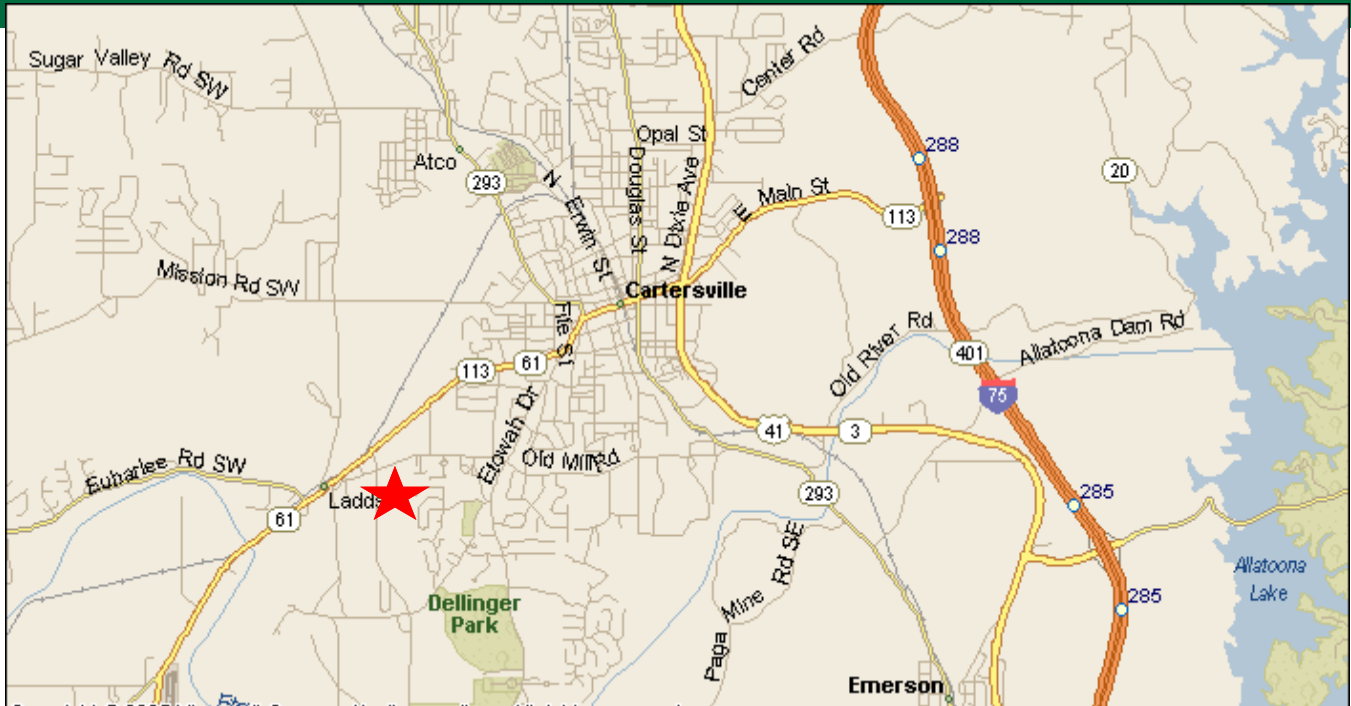


FEATURED SITE—1 to 25 Acres
Zoned Commercial/Mixed Use on Future Land Use Map

Information is deemed accurate but not warranted

For More Information Call;
MARK HARRIS, *Broker*
(770) 386-1400 Office
(770) 315-3145 Cellular

SITE LOCATION: 1-25 ACRES



DRIVING DIRECTIONS

- From I75 exit 296 (Main Street/Hwy 113) travel WEST on Main Street/Hwy 113
- Continue on Main Street/Hwy 113 through downtown Cartersville
- Bear slight LEFT after traffic signal @ Main St & Bartow St (Regions Bank on Left) to remain on Hwy 113
- Bear RIGHT at next traffic signal to remain on Hwy 113
- Turn LEFT onto Douthit Ferry Rd at McDonald's
- Site is located on the LEFT approximately 1/4 mile

TOTAL DISTANCE—2.6 MILES

H & H REALTY, LLC

Your Success is our Business



Commercial and Industrial Real Estate Services

Check us out on the web

www.handhrealty.net

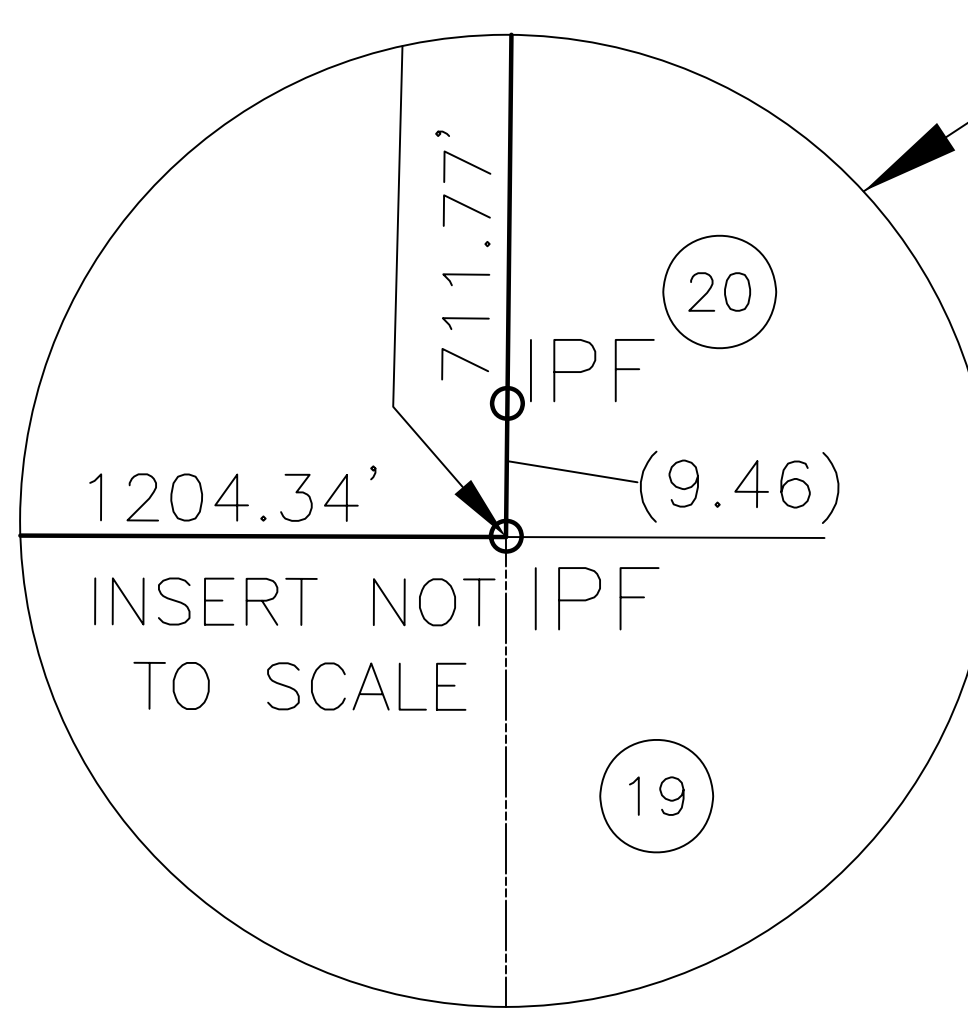
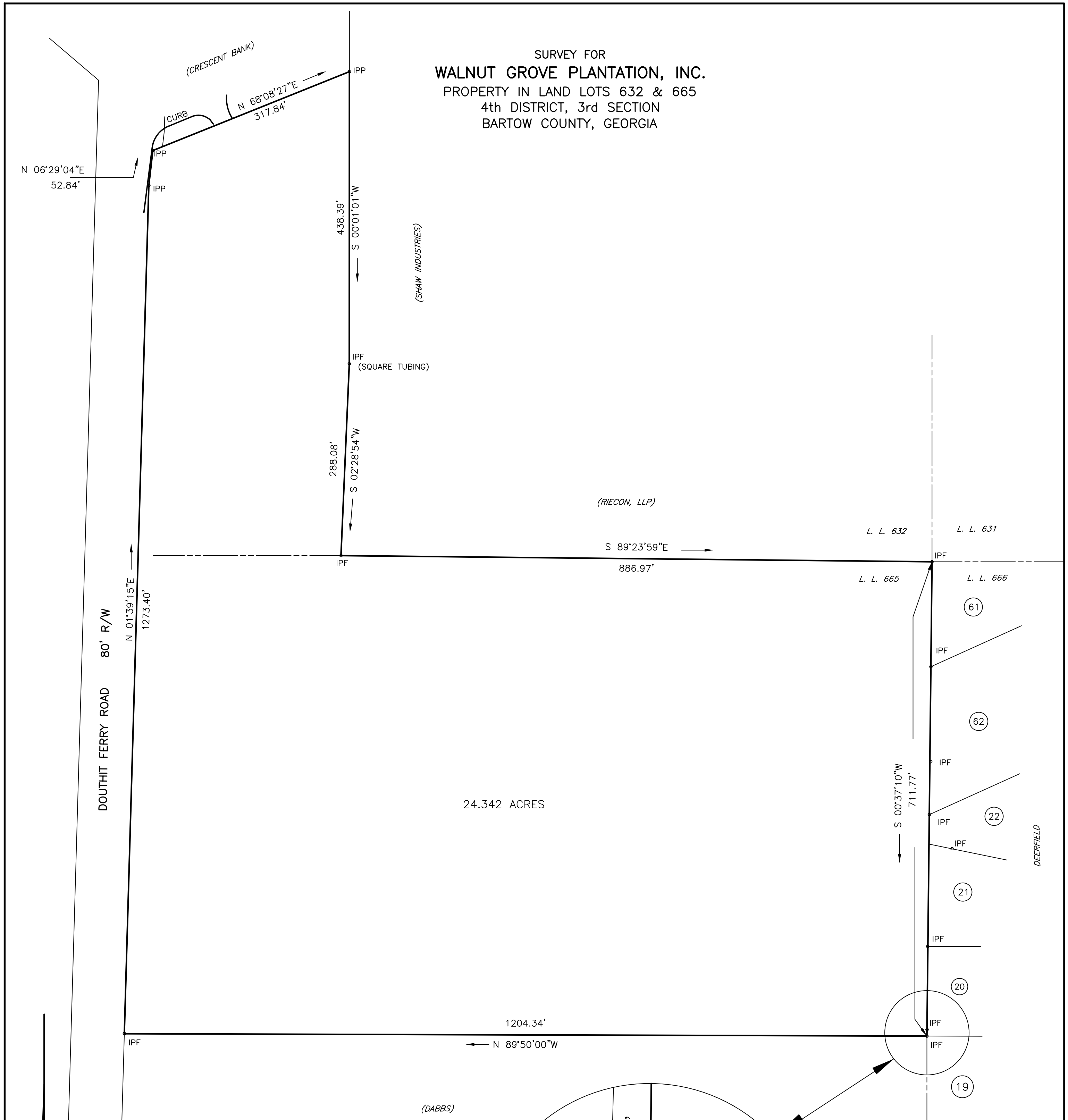
For More Information Call

MARK HARRIS, *Broker*

(770) 386-1400 Office

(770) 315-3145 Cellular

SURVEY FOR
WALNUT GROVE PLANTATION, INC.
 PROPERTY IN LAND LOTS 632 & 665
 4th DISTRICT, 3rd SECTION
 BARTOW COUNTY, GEORGIA



FIELD TRAVERSE:
 CLOSURE; ONE FOOT IN 20,000 FEET
 USING A LIETZ SET 3.
 ANGULAR ERROR; 0°00'06" PER ANGLE
 POINT USING A LIETZ SET 3.
 ADJUSTED; USING THE COMPASS RULE.

SMITH & SMITH LAND SURVEYORS, P.C.
 2 SOUTH AVENUE, CARTERSVILLE, GA. 30120
 PHONE 770-382-0457

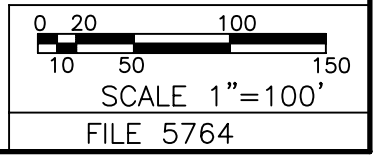
REGISTERED LAND SURVEYOR No. 1803

R/W — RIGHT OF WAY	R — RADIUS LP — LIGHT POLE
IPP — IRON PIN PLACED	-X-X- FENCE
IPF — IRON PIN FOUND	— — — LAND LOT LINE
CM — CONCRETE MARKER	⊙ — CENTER LINE
CH — CHORD	— — — POWER LINE
L OR A — LENGTH OF CURVE	PP — POWER POLE

5764.CRD 5764.DWG
 FLOOD INSURANCE RATE MAP 13015C0088 F
 DATED SEPT.29,1989 SHOWS THIS PROPERTY
 IS NOT IN THE 100 YEAR FLOOD ZONE.

NOTE: IRON PINS ARE (1/2"RE-BAR)
 EXCEPT AS SHOWN.

PLAT CLOSURE;
 ONE FOOT IN
 835,000 FEET.
 FEBRUARY 28, 2006



GEORGIA WEST ZONE
 GRID NORTH