

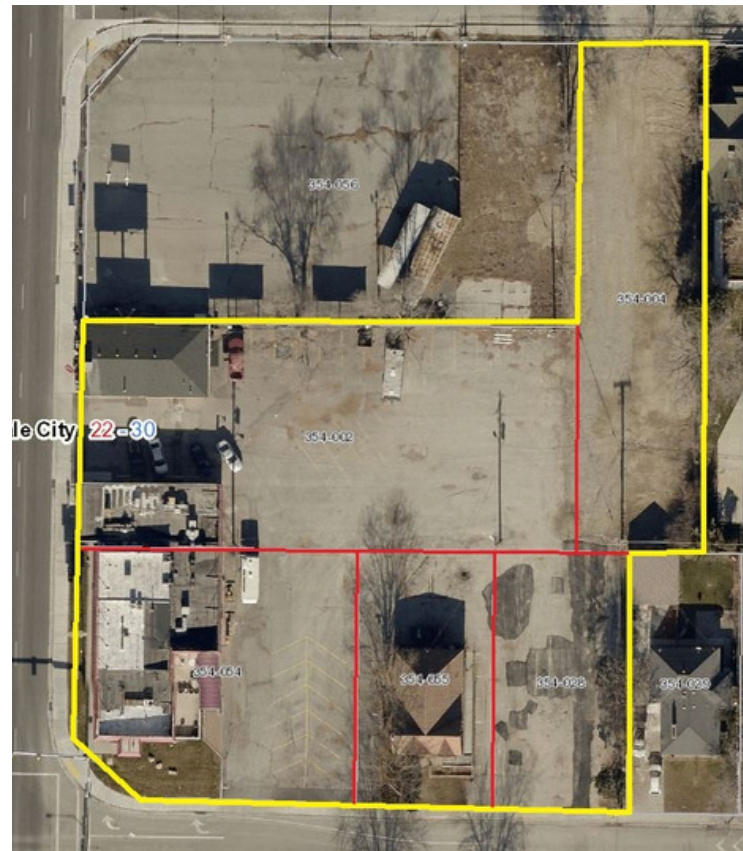


cRc Nationwide

COMMERCIAL REAL ESTATE CONSULTANTS

1.4 ACRES OF STATE STREET PROPERTY FOR SALE

7693 SOUTH STATE STREET, MIDVALE, UTAH 84047



Property Information:

- 1.40 Acres on State Street
- Excellent Retail/Office Site
- High Traffic Counts and Exposure

1.40 Acres Includes:

- 1,250 SF Office and 0.30 Acres
- 1,600 SF Retail and 0.50 Acres
- 5,000 SF Restaurant/Retail and 0.30 Acres
- Back 7720 S. Access Pad 0.30 Acres

SALE PRICE: \$1,700,000.00

Demographics

	1 Mile	3 Mile	5 Mile
Population	18,138	128,557	348,342
Households	6,621	46,604	122,717
Avg. Household Income	\$52,314	\$62,833	\$70,175

Traffic Counts

State Street: 43,872 Annual Average Daily Traffic
 Center Street: 21,433 Annual Average Daily Traffic

801.617.1700

WEST HARADIN

WEST.HARADIN@CRCNATIONWIDE.COM



PAT BARTON

PAT.BARTON@CRCNATIONWIDE.COM



cRc Nationwide

COMMERCIAL REAL ESTATE CONSULTANTS



7693 SOUTH STATE STREET, MIDVALE 84047



801.617.1700

WEST HARADIN

WEST.HARADIN@CRCNATIONWIDE.COM

PAT BARTON

PAT.BARTON@CRCNATIONWIDE.COM