



3825 South Florida Ave.
Suite 5
Lakeland, FL 33813

Phone: 863-619-6740
Fax: 863-619-6750

maria@mahoneygroupinc.com
www.mahoneygroupinc.com



*Commercial
Real Estate Services
From Local to Global
Since 1998*



For further information
regarding this property,
please contact:

Maria Mahoney,
FL, Real Estate Broker
863-619-6740



Rare Downtown Bartow

Prime Corner Building on 1.05 Acre For Lease / Sale



680 BROADWAY AVENUE, BARTOW, FL 33830

- 7,457 SF Office complex on 1.05 acre (45,868.52 SF)
- Main building 6,757 SF with 52' long drop-off canopy (currently office-formerly medical) and 720 SF modular office building. 40 parking spaces, pylon sign, lush landscaping.
- NE corner Broadway Avenue, Pearl Street and Central Avenue, 6 blocks South of Main Street, Polk County Courthouse and County Administration building.
- Base Lease Rate: \$12.00/SF, NNN.
- Sale/Purchase Price: \$1,025,000.00

DISCLAIMER: Information contained herein is from sources deemed reliable, but not verified and no warranty is made as to the accuracy thereof. This offering is made subject to errors. Omissions, change of price or other conditions, prior sale or lease or withdrawal without notice. Prospective buyers/ tenants are encouraged to verify, independently, all pertinent data. The Mahoney Group, Inc. 3825 S. Florida Avenue, Suite 5, Lakeland, Florida 33813 is the agent of and represents the Owner/Landlord of this property.



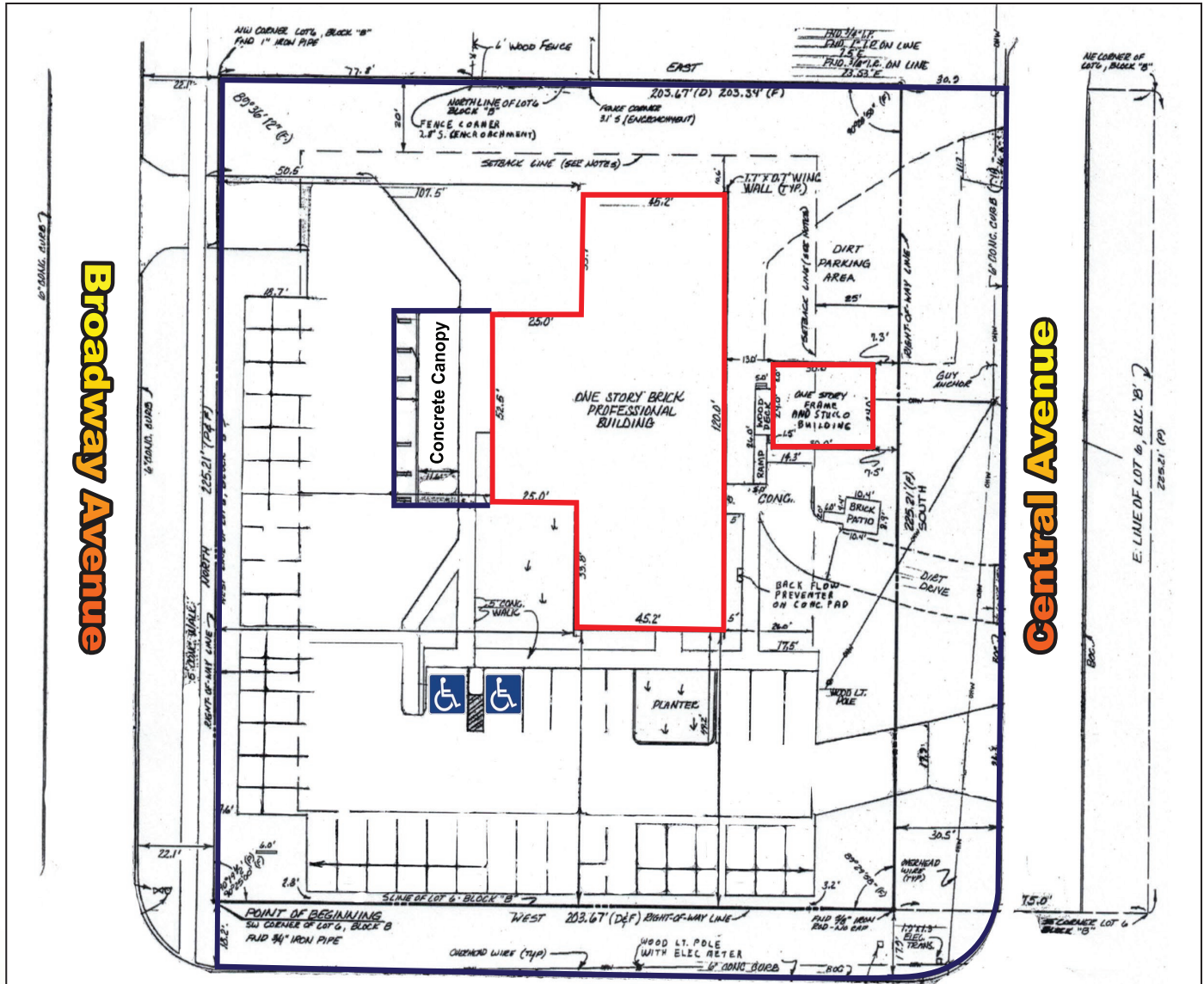
**RARE DOWNTOWN BARTOW
PRIME CORNER BUILDING ON 1.05 ACRE
FOR LEASE / FOR SALE**

Property Address:	680 BROADWAY AVENUE, BARTOW, FL 33830 Folio #: 25-30-08-411000-002060 Polk County, Florida
Property Location:	NE corner of Broadway Avenue and Pearl Street, 6 blocks South of Main Street intersection, Polk County Courthouse and County Administration building. The property wraps around Central Avenue.
Type Property:	Professional building with drive-thru canopy
Size Property/Features:	7,457 SF office complex, comprised of 2 buildings: <ul style="list-style-type: none">❖ 6,737 SF main building (CB/block/brick built 1974) with 52' long drop-off canopy – entrance/reception with glass panel and large waiting room – multiple offices (formerly a medical building with capped plumbing in many rooms) – fitness center with floor to ceiling mirrors, double restrooms with showers – Conference room Break room/lab – former X-Ray room - mail/area – large windows in corner offices – renovated Year 2002 - new roof Year 2010 – wiring for security video – cable for television - Wi-Fi and more.❖ 720 SF detached air conditioned modular office building with RR
Land Size:	1.05 ± acre (45,868.52 ± SF)
Land Dimensions:	225.21'/Broadway Avenue - 203.67'/Pearl Street - 225.21'/Central Ave.
Parking:	40 paved parking spaces
Land Use/Zoning:	Future Land Use: Commercial Zoning: P-1 City of Bartow (Professional Office)
Utilities:	Electric, water and sewer provided by the City of Bartow
Lease Rate:	\$12.00/SF, NNN – Operating Expenses estimated at \$3.00/SF
Sale/Purchase Price:	\$1,025,000.00 (\$137.45/SF)
Ad Valorem Taxes:	\$7,162.21/Year 2015
Comments:	Rare 1+ acre Downtown Bartow commercial property bordering on 3 streets with major visual impact and easy access. Lush landscaping and mature trees (oaks and sycamore) – double sided pylon sign. Ideal for professional/medical use.
Contact:	Maria Mahoney, 863 619-6740 Licensed Florida Real Estate Broker

DISCLAIMER: Information contained herein is from sources deemed reliable, but not verified and no warranty is made as to the accuracy thereof. This offering is made subject to errors. Omissions, change of price or other conditions, prior sale or lease or withdrawal without notice. Prospective buyers/ tenants are encouraged to verify, independently, all pertinent data. The Mahoney Group, Inc. 3825 S. Florida Avenue, Suite 5, Lakeland, Florida 33813 is the agent of and represents the Owner/Landlord of this property.



680 BROADWAY AVENUE, BARTOW, FL 33830



Broadway Avenue

Central Avenue

Pearl Street

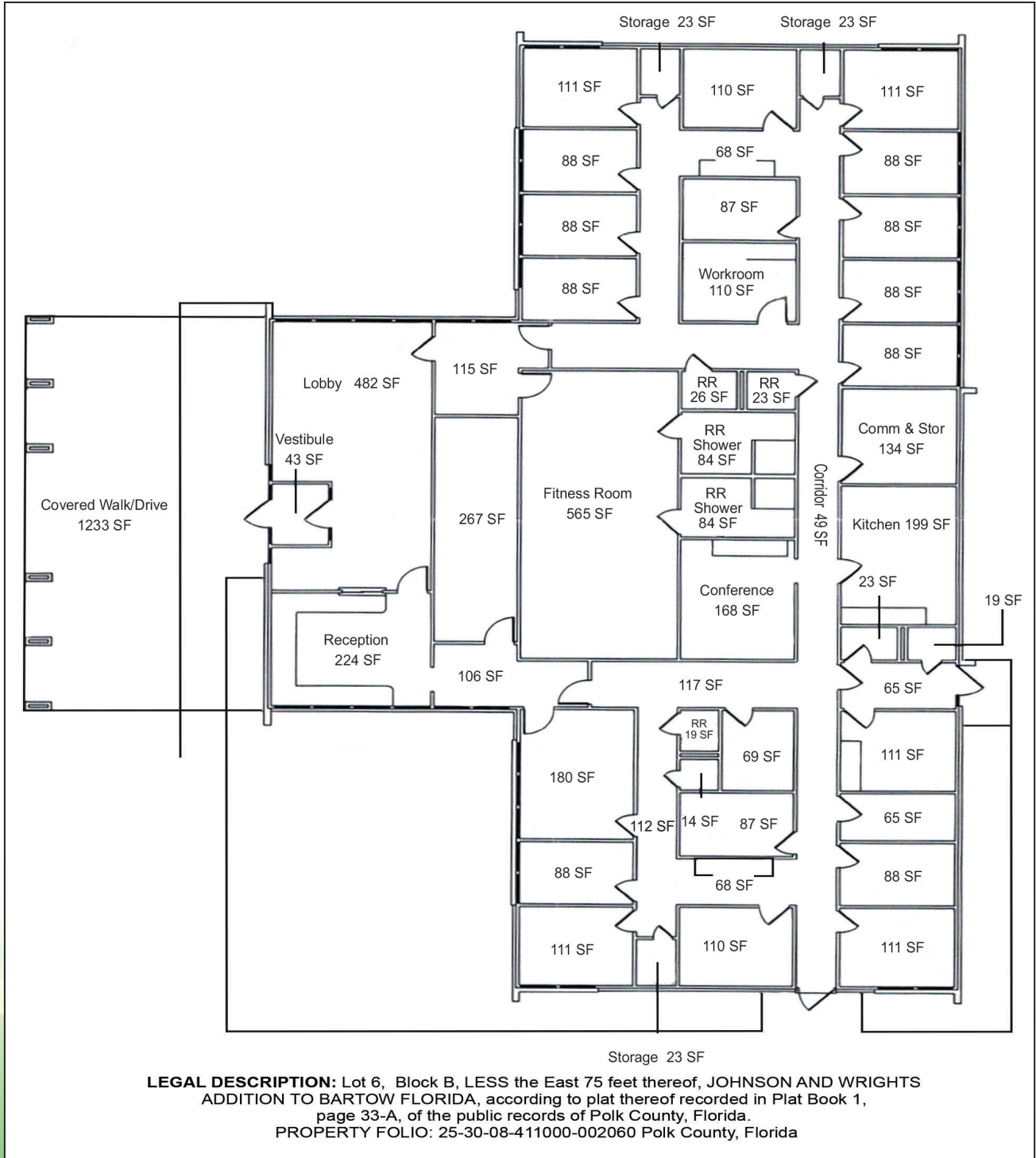


LEGAL DESCRIPTION: Lot 6, Block B, LESS the East 75 feet thereof, JOHNSON AND WRIGHTS ADDITION TO BARTOW FLORIDA, according to plat thereof recorded in Plat Book 1, page 33-A, of the public records of Polk County, Florida.
 PROPERTY FOLIO: 25-30-08-411000-002060 Polk County, Florida

DISCLAIMER: Information contained herein is from sources deemed reliable, but not verified and no warranty is made as to the accuracy thereof. This offering is made subject to errors. Omissions, change of price or other conditions, prior sale or lease or withdrawal without notice. Prospective buyers/ tenants are encouraged to verify, independently, all pertinent data. The Mahoney Group, Inc. 3825 S. Florida Avenue, Suite 5, Lakeland, Florida 33813 is the agent of and represents the Owner/Landlord of this property.



680 BROADWAY AVENUE, BARTOW, FL 33830



DISCLAIMER: Information contained herein is from sources deemed reliable, but not verified and no warranty is made as to the accuracy thereof. This offering is made subject to errors. Omissions, change of price or other conditions, prior sale or lease or withdrawal without notice. Prospective buyers/ tenants are encouraged to verify, independently, all pertinent data. The Mahoney Group, Inc. 3825 S. Florida Avenue, Suite 5, Lakeland, Florida 33813 is the agent of and represents the Owner/Landlord of this property.



680 BROADWAY AVENUE, BARTOW, FL 33830



Front View



Back View



Side View



Drive-Thru Canopy



Parking Lot View



Annex

DISCLAIMER: Information contained herein is from sources deemed reliable, but not verified and no warranty is made as to the accuracy thereof. This offering is made subject to errors. Omissions, change of price or other conditions, prior sale or lease or withdrawal without notice. Prospective buyers/ tenants are encouraged to verify, independently, all pertinent data. The Mahoney Group, Inc. 3825 S. Florida Avenue, Suite 5, Lakeland, Florida 33813 is the agent of and represents the Owner/Landlord of this property.



680 BROADWAY AVENUE, BARTOW, FL 33830



Reception



Waiting Room



Lobby View



Typical Office



Conference / Breakroom



Hallway



Fitness Room



Annex Training Room

DISCLAIMER: Information contained herein is from sources deemed reliable, but not verified and no warranty is made as to the accuracy thereof. This offering is made subject to errors. Omissions, change of price or other conditions, prior sale or lease or withdrawal without notice. Prospective buyers/ tenants are encouraged to verify, independently, all pertinent data. The Mahoney Group, Inc. 3825 S. Florida Avenue, Suite 5, Lakeland, Florida 33813 is the agent of and represents the Owner/Landlord of this property.



680 BROADWAY AVENUE, BARTOW, FL 33830



DISCLAIMER: Information contained herein is from sources deemed reliable, but not verified and no warranty is made as to the accuracy thereof. This offering is made subject to errors. Omissions, change of price or other conditions, prior sale or lease or withdrawal without notice. Prospective buyers/ tenants are encouraged to verify, independently, all pertinent data. The Mahoney Group, Inc. 3825 S. Florida Avenue, Suite 5, Lakeland, Florida 33813 is the agent of and represents the Owner/Landlord of this property.



680 BROADWAY AVENUE, BARTOW, FL 33830



DISCLAIMER: Information contained herein is from sources deemed reliable, but not verified and no warranty is made as to the accuracy thereof. This offering is made subject to errors. Omissions, change of price or other conditions, prior sale or lease or withdrawal without notice. Prospective buyers/ tenants are encouraged to verify, independently, all pertinent data. The Mahoney Group, Inc. 3825 S. Florida Avenue, Suite 5, Lakeland, Florida 33813 is the agent of and represents the Owner/Landlord of this property.



680 BROADWAY AVENUE, BARTOW, FL 33830



DISCLAIMER: Information contained herein is from sources deemed reliable, but not verified and no warranty is made as to the accuracy thereof. This offering is made subject to errors. Omissions, change of price or other conditions, prior sale or lease or withdrawal without notice. Prospective buyers/ tenants are encouraged to verify, independently, all pertinent data. The Mahoney Group, Inc. 3825 S. Florida Avenue, Suite 5, Lakeland, Florida 33813 is the agent of and represents the Owner/Landlord of this property.