



KW Commercial is
proud to present:



23306 Cree St
St Francis, MN

Chris Fritch, CCIM
Commercial Director
763-746-3996
chrisfritch@kw.com



23306 Cree St
St Francis, MN

Property Features:

Year Built: 2000

4940 Sq Ft Available

1 Story

Ample Parking

Excellent Visibility

Easy Access to Hwy's 47 and 65



23306 Cree St
St Francis, MN

Property Description:

Offered For \$299,000

Currently situated in the heart of St Francis, this exceptional retail property is on MN 47 and near other retail, and has outstanding visibility. This multi tenant building offers the new owner a wide range of business potential.

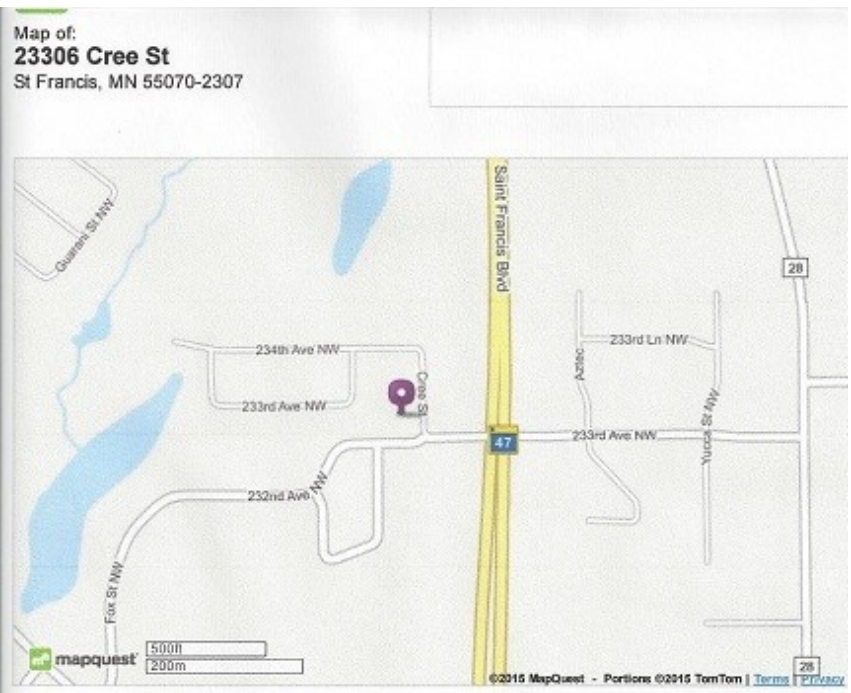
This investment property offers ample parking, and fantastic visibility. This property is fully functional and easily accessible from Highway 47.

KW Commercial Real Estate and Chris Fritch appreciate your consideration of this unique property and invite you to tour this property at your earliest convenience. Please call our office at any time for additional information.

763-746-3996



337 Northdale Blvd Coon Rapids, MN



NOTES