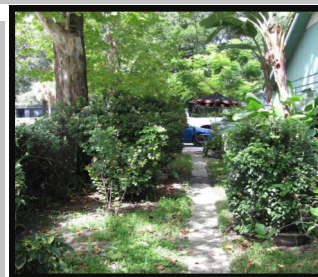
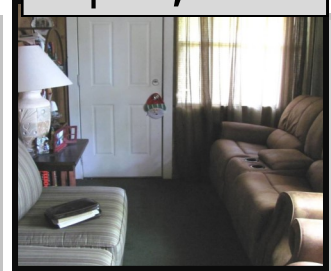


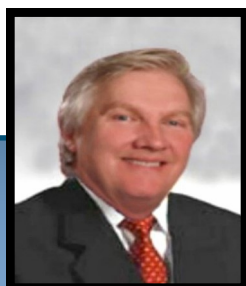
**Large Corner Industrial Lot - 115 X102**  
**Usable 1,209 Sq Ft Bdg**  
**Ingress, egress, from 30th St & Caracas St**

**\$85,000**

**5014 N 30th St, Tampa, Fl 33610**



**Large industrial lot with usable 1209 sq ft bldg. for offices or storage. Property, which includes 2 lots, has 115' street frontage and 102' street frontage, -on a corner, totals 11,730 sq ft. Both lots are zoned I-G, are fenced, have beautiful landscaping, and can be entered and exited from both streets. The building was built in 1935 and needs some work, but for I-G zoning and \$85,000 it's a bargain for any business contractor using vehicles and storage, repair, and manufacturing. Owners still live there!**



**Ted Hager**  
**Commercial Specialist**  
**BSIE, ME, RECS, GRI, SSRS, BBF**  
**TEAM HAGER COMMERCIAL REAL ESTATE, LLC**

6706 N Armenia Ave  
Tampa, Fl 33604

Direct Phon: 813-294-0404  
E-Mail: TedHager@TeamHager.com

[www.TeamHagerCommercialRealEstate.com](http://www.TeamHagerCommercialRealEstate.com)

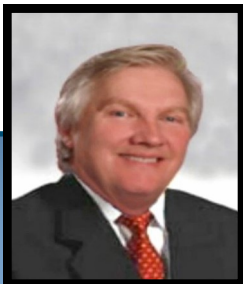


Information herein is supplied by third parties and is believed to be accurate. It is offered for descriptive purposes only and no warranty is made by the Seller or its agents, nor should any be implied. All parties should independently verify all facts to their satisfaction.

**Large Corner Industrial Lot - 115 X102**  
**Usable 1,209 Sq Ft Bdg**  
**Ingress, egress, from 30th St & Caracas St**



<p><b>1</b> Strap #: <a href="#">A-05-29-19-49Y-000011-00008.0</a>  <b>S-T-R:</b> 5-29S-19E  <b>Prop Address:</b> 5016 30th St  Tampa FL 33610  <b>Owner(s):</b> JOHNNIE L AND  PATRICIA G EVANS  <b>Mail Address:</b> 5014 N 30th St  Tampa FL 33610</p>	<p><b>Just Value:</b> \$16,215.00  <b>Assessed Value:</b> \$16,215.00  <b>Land Use Code:</b> 40  <b>Use Desc:</b> Vacant industrial  <b>Zoning:</b> IG  <b>Last Sale:</b> \$4,000.00 on  3/1/1989</p>	<p><b>Bldg HTD Sq Ft:</b> 0  <b>Bldg TOT Sq Ft:</b> 0  <b>Total Land Area:</b> 0.11 Acres  4792 Sq Ft    <b>Last Sale Price/Acre:</b> \$36,363.64  <b>Last Sale Price/Bldg Sq Ft:</b> \$0.00  <b>Last Sale Price/Land Sq Ft:</b> \$0.83</p>
<p><b>2</b> Strap #: <a href="#">A-05-29-19-49Y-000011-00009.0</a>  <b>S-T-R:</b> 5-29S-19E  <b>Prop Address:</b> 5014 N 30th St  Tampa FL 33610  <b>Owner(s):</b> PATRICIA G EVANS  <b>Mail Address:</b> 5014 N 30th St  Tampa FL 33610</p>	<p><b>Just Value:</b> \$42,762.00  <b>Assessed Value:</b> \$31,150.00  <b>Land Use Code:</b> 1  <b>Use Desc:</b> Single Family  Residence  <b>Zoning:</b> IG  <b>Last Sale:</b> \$3,000.00 on  1/1/1973</p>	<p><b>Bldg HTD Sq Ft:</b> 1461  <b>Bldg TOT Sq Ft:</b> 1920  <b>Total Land Area:</b> 0.14 Acres  6098 Sq Ft    <b>Last Sale Price/Acre:</b> \$21,428.57  <b>Last Sale Price/Bldg Sq Ft:</b> \$1.56  <b>Last Sale Price/Land Sq Ft:</b> \$0.49</p>



**Ted Hager**  
**Commercial Specialist**  
**BSIE, ME, RECS, GRI, SSRS, BBF**  
**TEAM HAGER COMMERCIAL REAL ESTATE, LLC**

6706 N Armenia Ave  
Tampa, Fl 33604

Direct Phon: 813-294-0404  
E-Mail: [TedHager@TeamHager.com](mailto:TedHager@TeamHager.com)

[www.TeamHagerCommercialRealEstate.com](http://www.TeamHagerCommercialRealEstate.com)



Information herein is supplied by third parties and is believed to be accurate. It is offered for descriptive purposes only and no warranty is made by the Seller or its agents, nor should any be implied. All parties should independently verify all facts to their satisfaction.