



cRc Nationwide

COMMERCIAL REAL ESTATE CONSULTANTS

INTERWEST COMMERCIAL PARK

31 NORTH REDWOOD ROAD, NORTH SALT LAKE, UTAH 84054



Demographics

	1 Mile	3 Mile	5 Mile
Population	5,188	41,871	114,407
Households	1,742	13,099	36,987
Avg. Household Income	\$60,911	\$73,776	\$63,057

Traffic Counts

Center Street: 13,461 Annual Average Daily Traffic
 Redwood Road: 13,000 Annual Average Daily Traffic

801.617.1700



**COSTAR
 POWER BROKER AWARD**
 TOP FIRM IN SALES & LEASING
 2010, 2011, 2012, 2013, 2014, 2015, 2016

PROPERTY INFORMATION:

- 17,038 Total SF
 First Floor Office: 7,342 SF
 Second Floor Office: 2,847 SF
 Warehouse: 6,849 SF
- (3) GL Doors
- T1 Line
- Clear Height: 20'
- Office Space Consists of Several Private Offices, Open Areas, Reception Areas and Breakroom/Kitchen
- Parking Ratio: 1.31/1,000 SF
- Easy Access to Legacy Parkway, I-15 and I-215

SALE PRICE REDUCED!

~~\$1,725,000.00~~
\$1,618,610.00
 (\$95.00/SF)

JUSTIN WELCH

JUSTIN.WELCH@CRCNATIONWIDE.COM

SCOT BOLEY

SCOT.BOLEY@CRCNATIONWIDE.COM



cRc Nationwide

COMMERCIAL REAL ESTATE CONSULTANTS

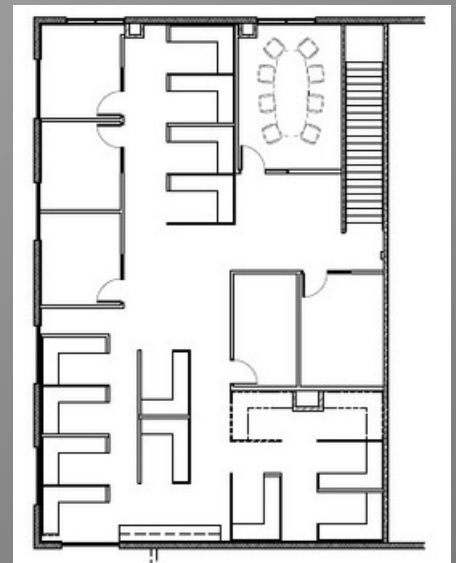
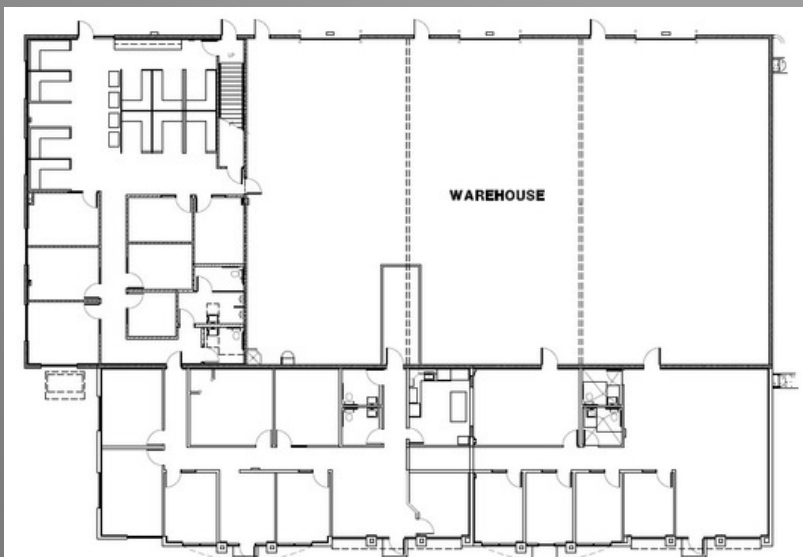


31 NORTH REDWOOD ROAD, NORTH SALT LAKE, UTAH 84054



FIRST FLOOR

SECOND FLOOR



JUSTIN WELCH
JUSTIN.WELCH@CRCNATIONWIDE.COM

801.617.1700

SCOT BOLEY
SCOT.BOLEY@CRCNATIONWIDE.COM