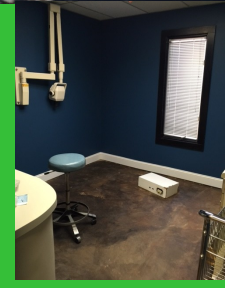


# 4,000 SF Medical Space Numerous Offices

**AVAILABLE**



Currently a Dental Practice  
Can be purchased with Furnishings!  
High traffic area located across from  
Cartersville Medical Center.



900 SF Garage Attachment w/ Rollup Door.  
Perfectly suited for medical practice w/  
Numerous offices. Give Us a Call Today!

**H & H REALTY, LLC**  
*Your Success is our Business*



Commercial and Industrial Real Estate Services

**770.386.1400**

[www.handhrealty.net](http://www.handhrealty.net)

**Charley Harper**  
Partner/Associate  
Broker

Cell (678) 986-1143

**Mark Harris**  
Broker

Cell (770) 314-3145

