

Tomlin Professional Building

At 7 Myers Drive

Office Space

For Sale/Lease

One 4,000 SF Suite Remaining



Located at the 7 Myers Dr & Tomlin Station Rd Mullica Hill, NJ

Property Information

Lot Size: 3 Acres
Build to Suit: Medical/Professional Office
Building Size: 16,000 SF
Available Unit: 4,000 SF
Parking designed for 80 spaces per lot
Electric, Gas, Public Water & Septic available

Sale Price per SF Based on Fit-Out

Lease Rate: \$18 SF plus CAM, NNN



26 S Maple Ave, Suite 103
Marlton, NJ 08053
856-985-8565 Office
856-985-8563 Fax
www.eaglecommercialre.com

Anthony Pustizzi, Broker

609-230-0896 Cell

tpustizzi@eaglecommercialre.com

Property Location Information

In one of Gloucester Counties fastest growing communities
At intersection of Rt 322 & Tomlin Station Rd
Just 1/2 Mile to Exit 2 of NJ Turnpike
Close Proximity to major highways, Rt 295 & Rt 55
High Visibility and Traffic Counts
Join Neighboring Businesses: Inspira, Advocare, Collision Care, Advanced Cardiology & SpaceWorks

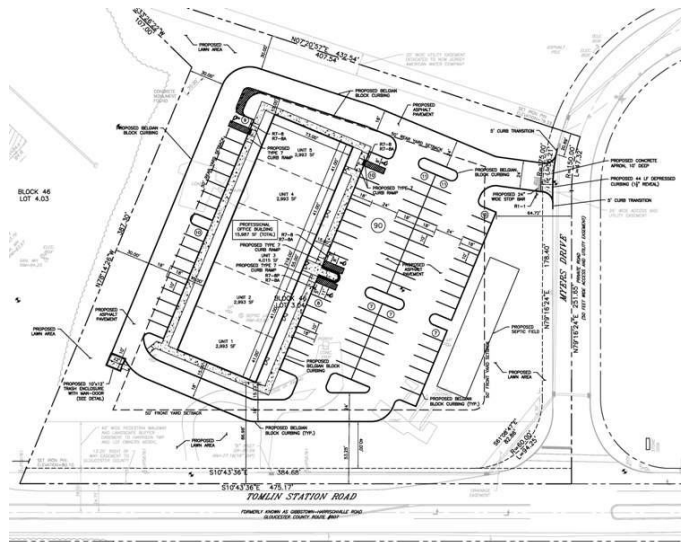
All information has been obtained from sources we believe to be reliable; however we make no guarantees about its accuracy. We include all projections, assumptions and estimates for example only and they may not represent future performance. Property availability is subject to changes in price, terms, prior sale or lease without notice. Prospective buyers should consult their tax and legal advisors to conduct their own investigation of the property and transactions. Only a fully executed contract detailing all agreed upon terms shall be binding upon parties to transactions.



Build to Suit

Medical/Professional Office Design

Block 46 Lot 3.04



Eagle Commercial Real Estate