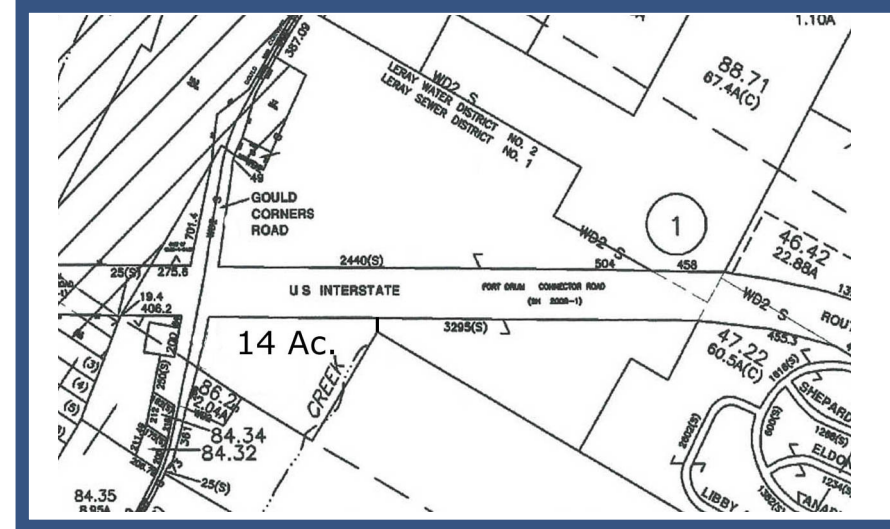


CARSON COMMERCIAL & HOMES

"WHERE INTEGRITY MATTERS"

PO Box 874, CAPE VINCENT, NY 13618
(315) 405-5097 kcarson@carsonrealestatesales.com
CARSONREALESTATESALES.COM

14+/- ACRES FOR SALE Goulds Corners Road (at Interstate 781) LERAY, NEW YORK



14+/- Acres

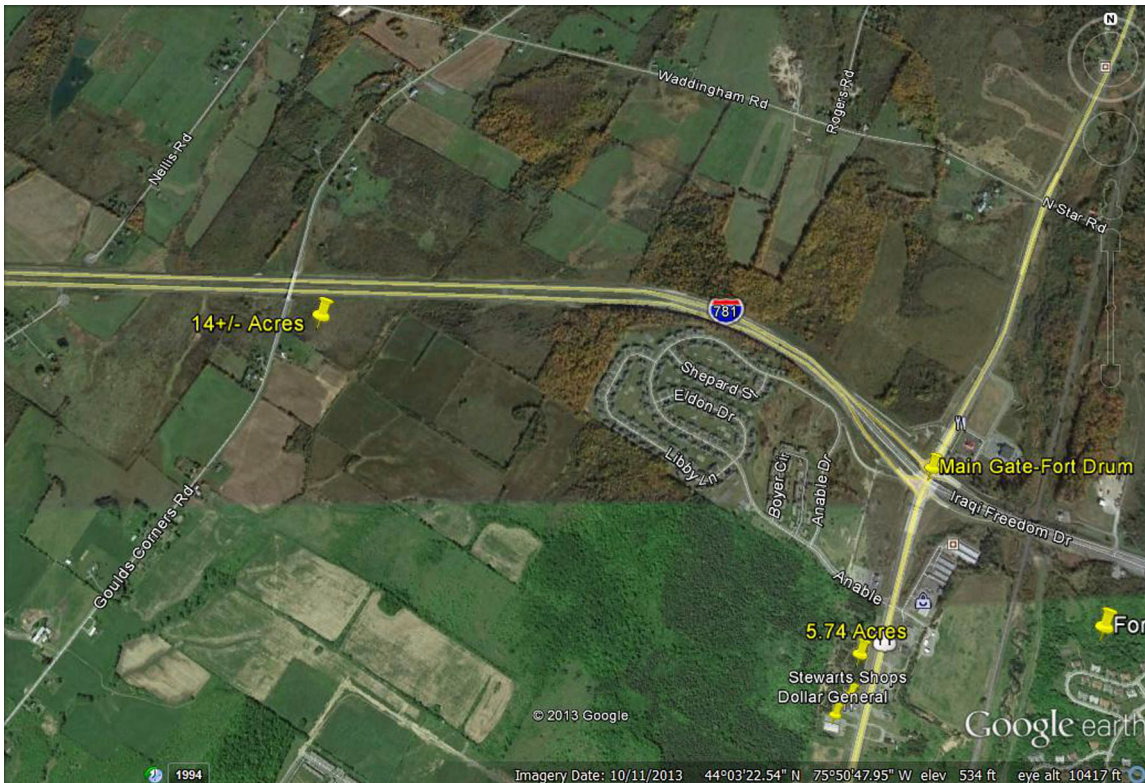
Approx. 350' Frontage
on Goulds Corners Road

Perfect for mobil home park, motel, general
industrial, or ???

Distance to Main Gate to Fort Drum:
less than 3 miles

Fort Drum Population: 36,900
Combined Population of surrounding towns
(incl. Leray, Pamela, Calcium, Black River,
Evans Mills): 30,399
Watertown Population: 27,023
(according to 2010 Census)
Jefferson County Population (2012):
120,000

The population represents the 9th largest
numerical gain, and the #1 largest percent-
age gain, for all Counties in New York State
since 2010.



For more information, please contact: Karen Carson, Broker/Owner
(315) 405-5097 kcarson@carsonrealestatesales.com