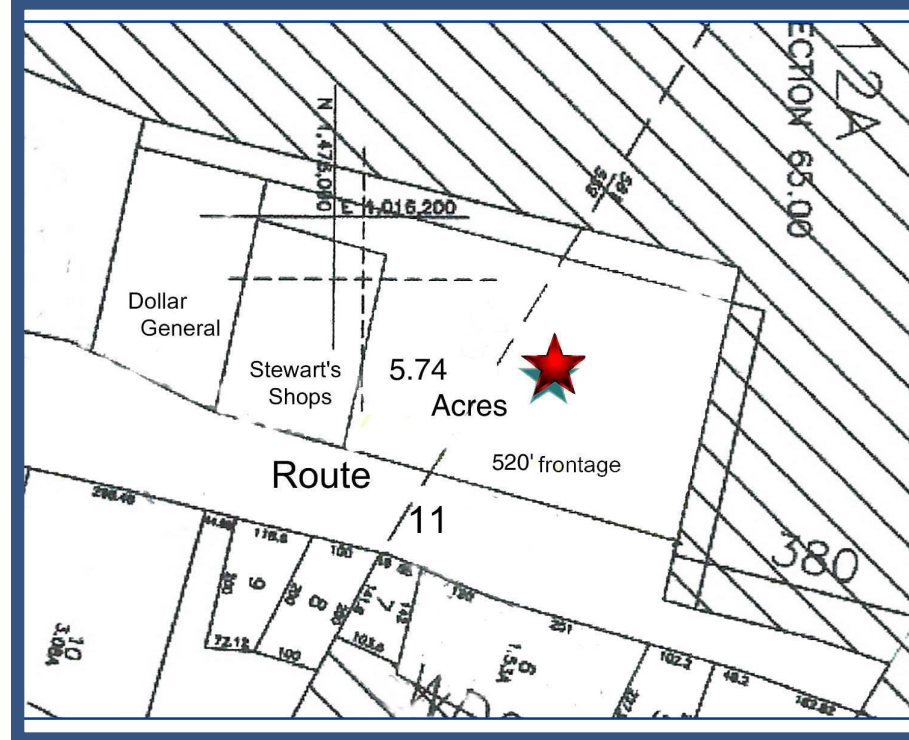


CARSON COMMERCIAL & HOMES

"WHERE INTEGRITY MATTERS"

PO Box 874, CAPE VINCENT, NY 13618
(315) 405-5097 kcarson@carsonrealestatesales.com
CARSONREALESTATESALES.COM

5.74 ACRES FOR SALE ROUTE 11, LERAY, NEW YORK

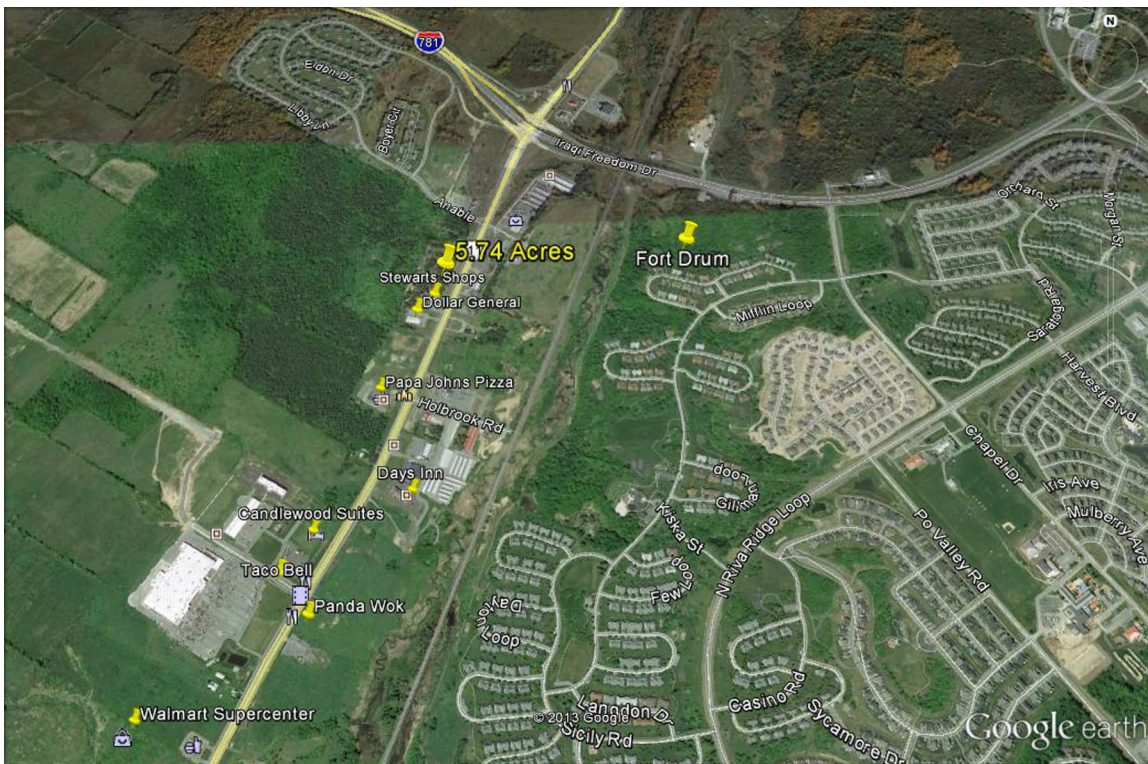


5.74 Acres, 520' Frontage On Rte 11

Perfect retail, restaurant, or ??? parcel
to accommodate Fort Drum, which is just
across the road!

Fort Drum Population: 36,900
Combined Population of surrounding towns
(incl. Leray, Pamela, Calcium, Black River,
Evans Mills): 30,399
Watertown Population: 27,023
(according to 2010 Census)
Jefferson County Population (2012):
120,000

The population of Jefferson County, NY, represents the 9th largest numerical gain, and the #1 largest percentage gain, for all Counties in New York State since 2010



For more information, please contact: Karen Carson, Broker/Owner
(315) 405-5097 kcarson@carsonrealestatesales.com