

For Sale or Lease

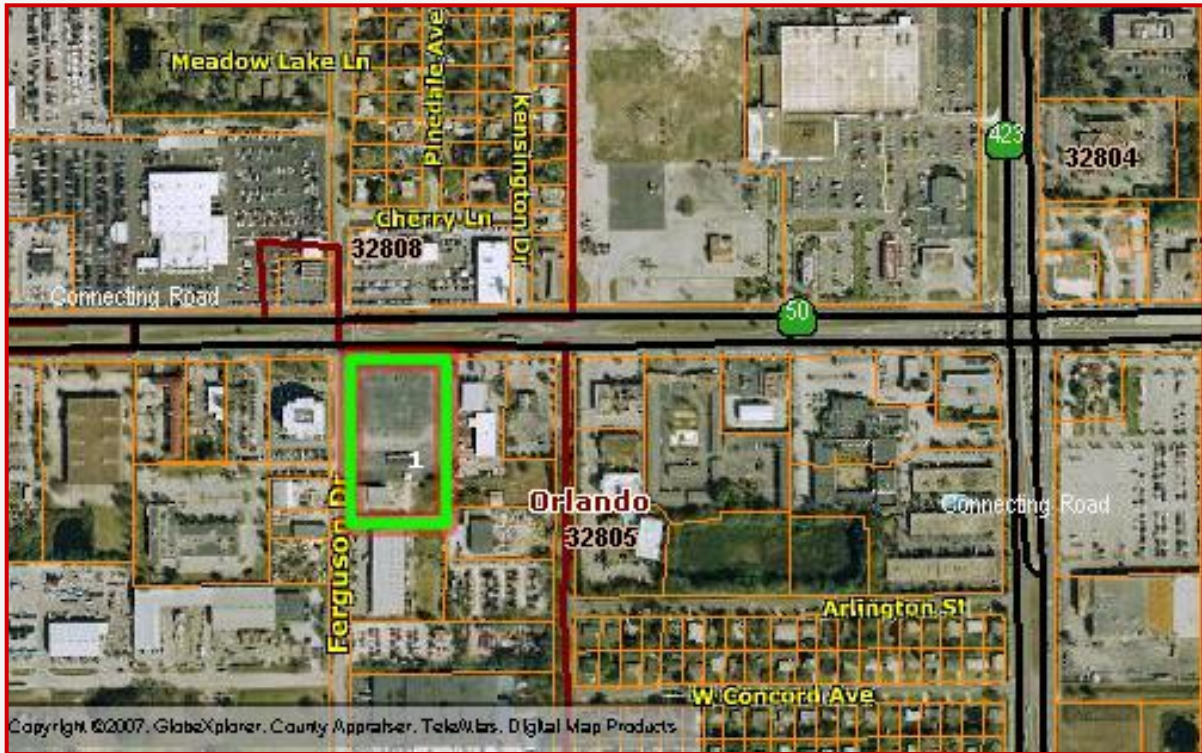
Ideal for

Automobile-Related Uses

3490 W. Colonial Drive

Orlando, FL 32808

3.11 Acres +/-



IMPROVEMENTS:

2,052 square foot commercial building (2001) and 3,726 square foot warehouse (1957). Paved for use as automobile sales facility. Modular office building may be leased.

SIZE:

3.1124 +/- acres

ZONING:

I-G, City of Orlando

ACCESS:

Directly on W. Colonial Drive, at the corner of Ferguson Drive; just west of John Young Parkway (SR 423), in the heart of automobile row.

TERMS:

Lease or purchase: negotiable

SELLER FINANCING POSSIBLE



Contact:
MARGERY JOHNSON CCIM, CIPS
Senior Director
Land Brokerage Services
407-841-8000
margery.johnson@cushwake.com

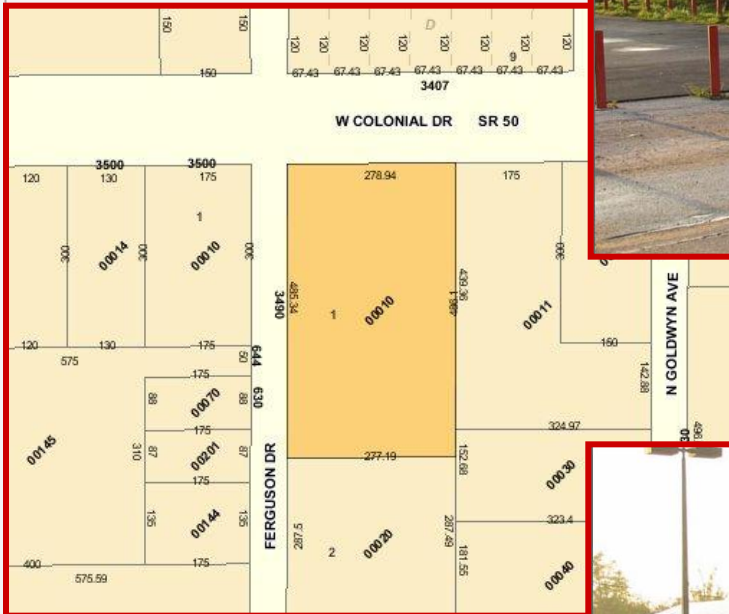


For Sale or Lease

3490 W. Colonial Drive Orlando, FL 32808 3.11 Acres +/-

NOTE:

Dealership has moved. All offers seriously considered.



Exclusively Listed By:

Cushman & Wakefield of Florida, Inc.
MARGERY JOHNSON CCIM, CIPS
Senior Director
Land Brokerage Services
407-841-8000
margery.johnson@cushwake.com

A full commission computed and earned in accordance with the rates and conditions of our agency agreement with our principal, when received from our principal, will be paid to a cooperating broker who consummates a sublease which is unconditionally executed and delivered by and between sublandlord and subtenant. (A copy of the rates and conditions referred to above are available upon request.)

No warranty or representation, express or implied, is made as to the accuracy of the information contained herein, and same is submitted subject to errors omissions, change of price, rental or other conditions, withdrawal without notice, and to any specific listing conditions, imposed by our principals.



800 N. Magnolia Avenue, Suite 450 Orlando, FL 32803