



Intermountain Realty, Inc.

The Opportunity

This 240 acre parcel lies 20 minutes Northwest of Baker City. Situated at the base of the Elkhorn Range of the Blue Mountains, the property contains a combination of mature timber and open meadows. There are approximately 60 acres of irrigated pasture combined with the timbered setting makes this a haven for big game hunting or just viewing. The timber has been managed and contains ponderosa pine, fir and spruce. The ranch is improved with a completely renovated 2 bedroom 2 bath home, barn / shop, and landscape. Live creek and a large pond, orchard and total seclusion make this a one of a kind property being so private, yet close to town.



The Property

Location:

13594 Willow Creek Lane
Haines, OR 97833

County: Baker County

Property Taxes (2014): \$1,203.64

Lot Size: 240.74 acres m/l

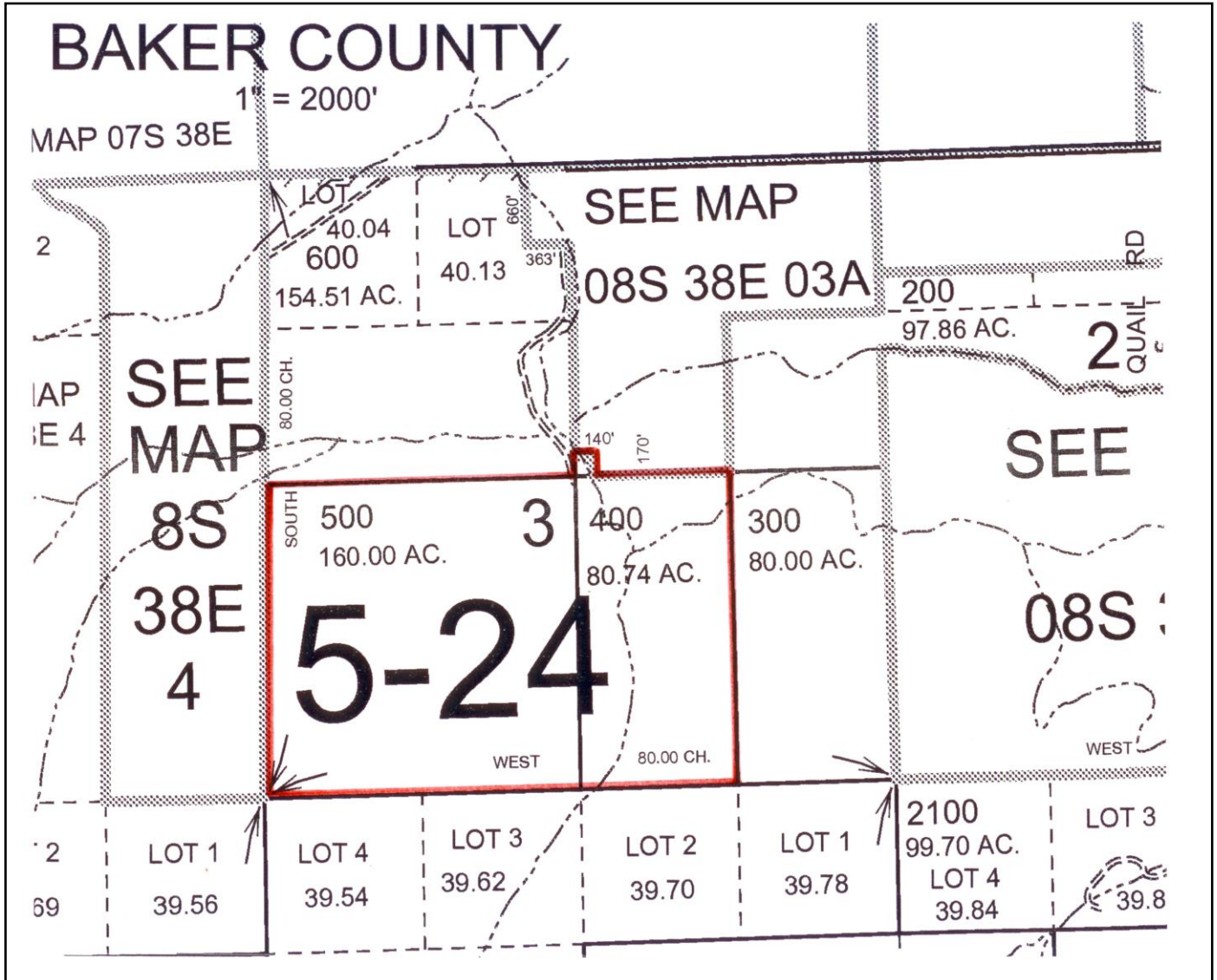
First Time Offering & Priced to Sell at ~~\$775,000~~

Price Reduced to \$675,000

For additional information contact:
INTERMOUNTAIN REALTY, INC.
1425 Campbell Street, Baker City, OR 97814
Office: 541.523.4434
Email: info@intermountainland.com

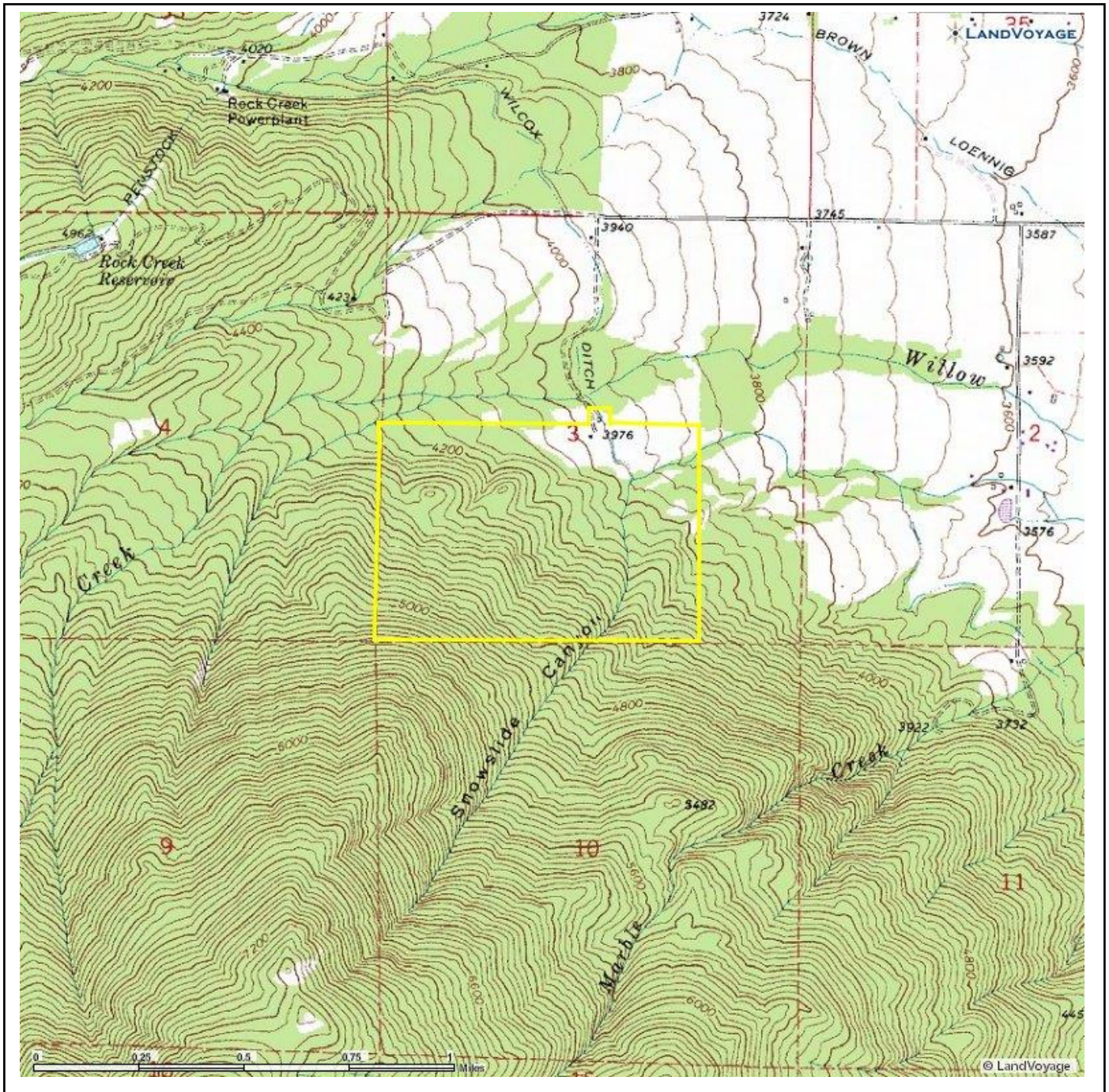
* All information furnished is from sources deemed reliable and is published subject to errors, omissions, changes of conditions, terms, price or withdrawal without notice.

Willow Creek Ranch
Plat Map #08S38
Tax Lot 400 & 500



** All information furnished is from sources deemed reliable and is published subject to errors, omissions, changes of conditions, terms, price or withdrawal without notice.*

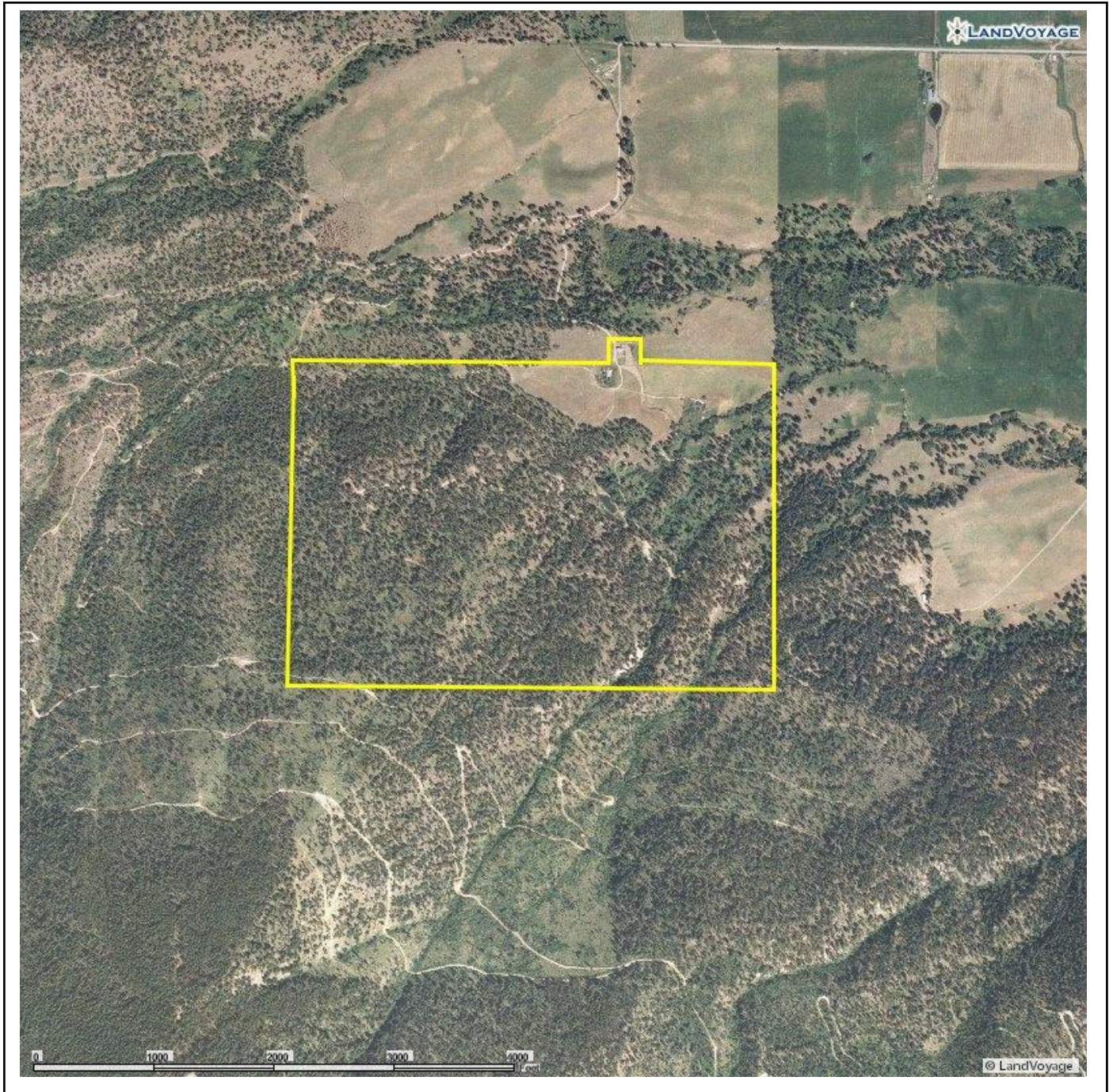
Willow Creek Ranch USGS Map



* All information furnished is from sources deemed reliable and is published subject to errors, omissions, changes of conditions, terms, price or withdrawal without notice.

Willow Creek Ranch

Aerial View



** All information furnished is from sources deemed reliable and is published subject to errors, omissions, changes of conditions, terms, price or withdrawal without notice.*

Willow Creek Ranch

Additional Photos



Additional Photos

