

# REDFORD TOWNSHIP - MUNICIPAL APPROVED/UNDER CONSTRUCTION RETAILER FACILITY

26629 PLYMOUTH ROAD | REDFORD TOWNSHIP, MI 48239



## FOR SALE

**C3 CRE, LLC**

Woodward Crossings - 36800 Woodward Avenue | Suite 301 | Bloomfield Hills, MI 48304 | 248.220.1110 | c3cre.com

One Harbour Place - 777 South Harbour Island Boulevard | Suite 250 | Tampa, FL 33602 | 813.212.9155 | info@c3cre.com



# REDFORD TOWNSHIP - MUNICIPAL APPROVED/UNDER CONSTRUCTION RETAILER FACILITY

26629 PLYMOUTH ROAD | REDFORD TOWNSHIP, MI 48239

## PROPERTY HIGHLIGHTS

- Municipal approved/under construction Retailer facility available for sale - license and real estate included.
- The property consists of a proposed new construction freestanding building, with ongoing construction, that features twenty (20) parking spaces and sits right along the main road for excellent visibility and access.
- Great opportunity for a flagship location in a capped retail market with a limited number of approvals in Redford Township, which is uniquely positioned near several cities that currently lack Retailer facilities.
- In addition to being conveniently located near I-96 freeway, the site sits at the intersection of the heavily traveled Plymouth and Inkster Roads with a combined daily traffic count of 38,000+ vehicles per day.
- Located in a densely populated residential area and tremendous synergy in the immediate marketplace with several national/regional tenants.

DEMOGRAPHICS	1 MILE	3 MILES	5 MILES
Total Households	5,397	42,188	124,602
Total Population	13,941	110,056	324,040
Average HH Income	\$88,378	\$84,148	\$79,975

## BUILDING SIZE

2,673 SF

## LAND SIZE

0.33 Acres

## SALES PRICE

\$1,550,000 (Seller Financing Available) (Price Subject to Change as Construction Continues)

## AREA TENANTS



### C3 CRE, LLC

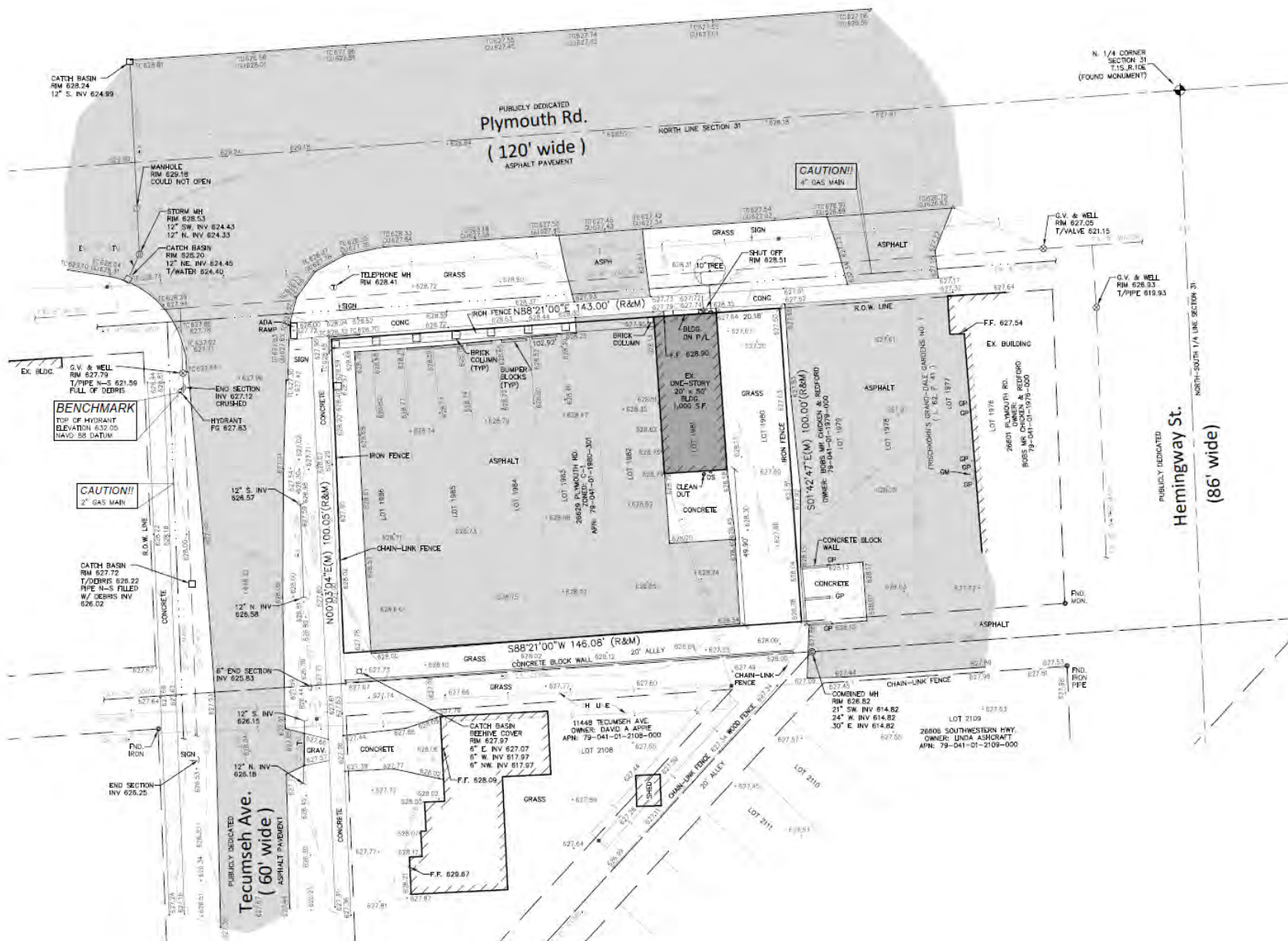
Woodward Crossings - 36800 Woodward Avenue | Suite 301 | Bloomfield Hills, MI 48304 | 248.220.1110 | c3cre.com

One Harbour Place - 777 South Harbour Island Boulevard | Suite 250 | Tampa, FL 33602 | 813.212.9155 | info@c3cre.com



# REDFORD TOWNSHIP - MUNICIPAL APPROVED/UNDER CONSTRUCTION RETAILER FACILITY

26629 PLYMOUTH ROAD | REDFORD TOWNSHIP, MI 48239



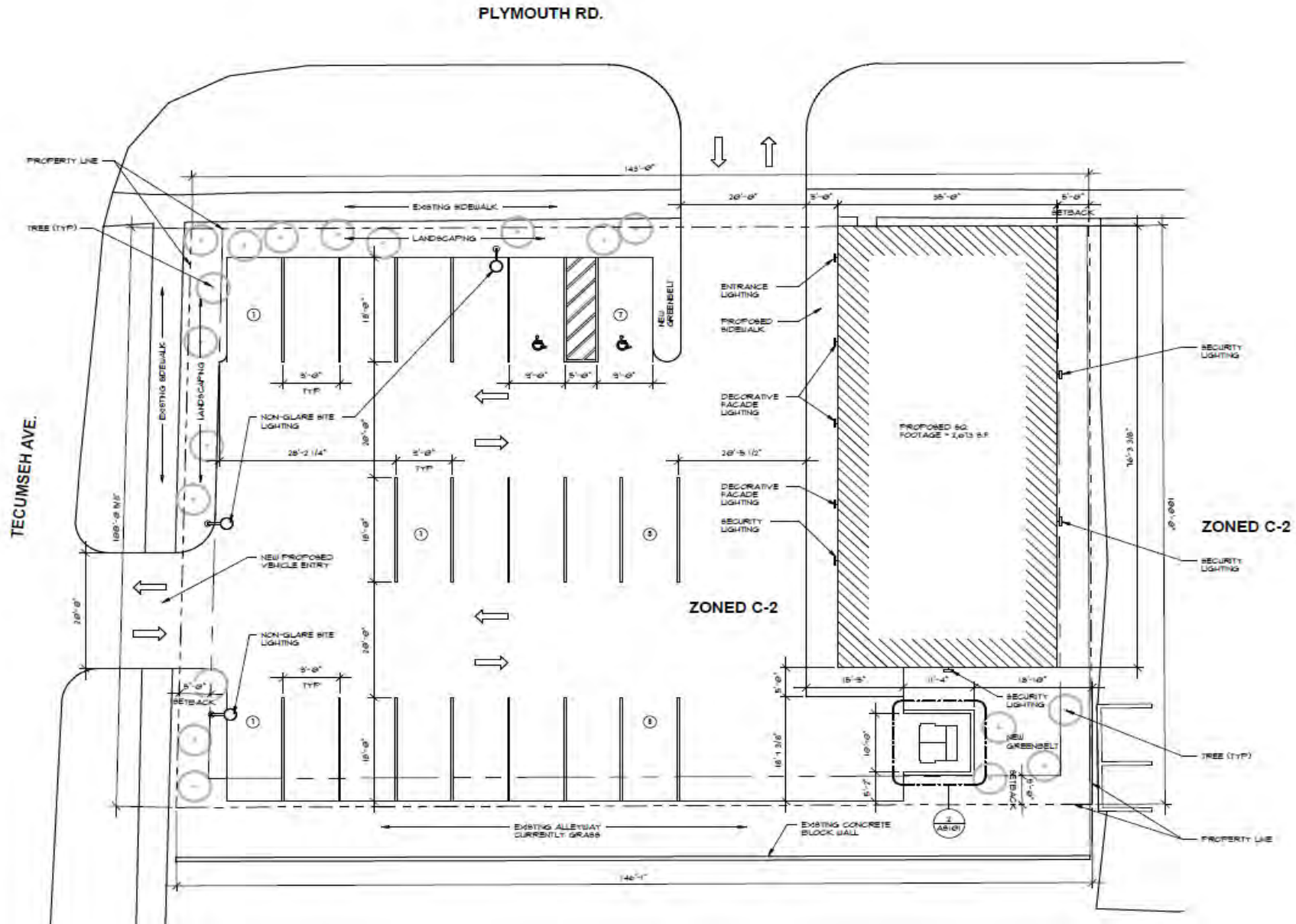
### C3 CRE, LLC

Woodward Crossings - 36800 Woodward Avenue | Suite 301 | Bloomfield Hills, MI 48304 | 248.220.1110 | c3cre.com  
One Harbour Place - 777 South Harbour Island Boulevard | Suite 250 | Tampa, FL 33602 | 813.212.9155 | info@c3cre.com



# REDFORD TOWNSHIP - MUNICIPAL APPROVED/UNDER CONSTRUCTION RETAILER FACILITY

26629 PLYMOUTH ROAD | REDFORD TOWNSHIP, MI 48239



**C3 CRE, LLC**

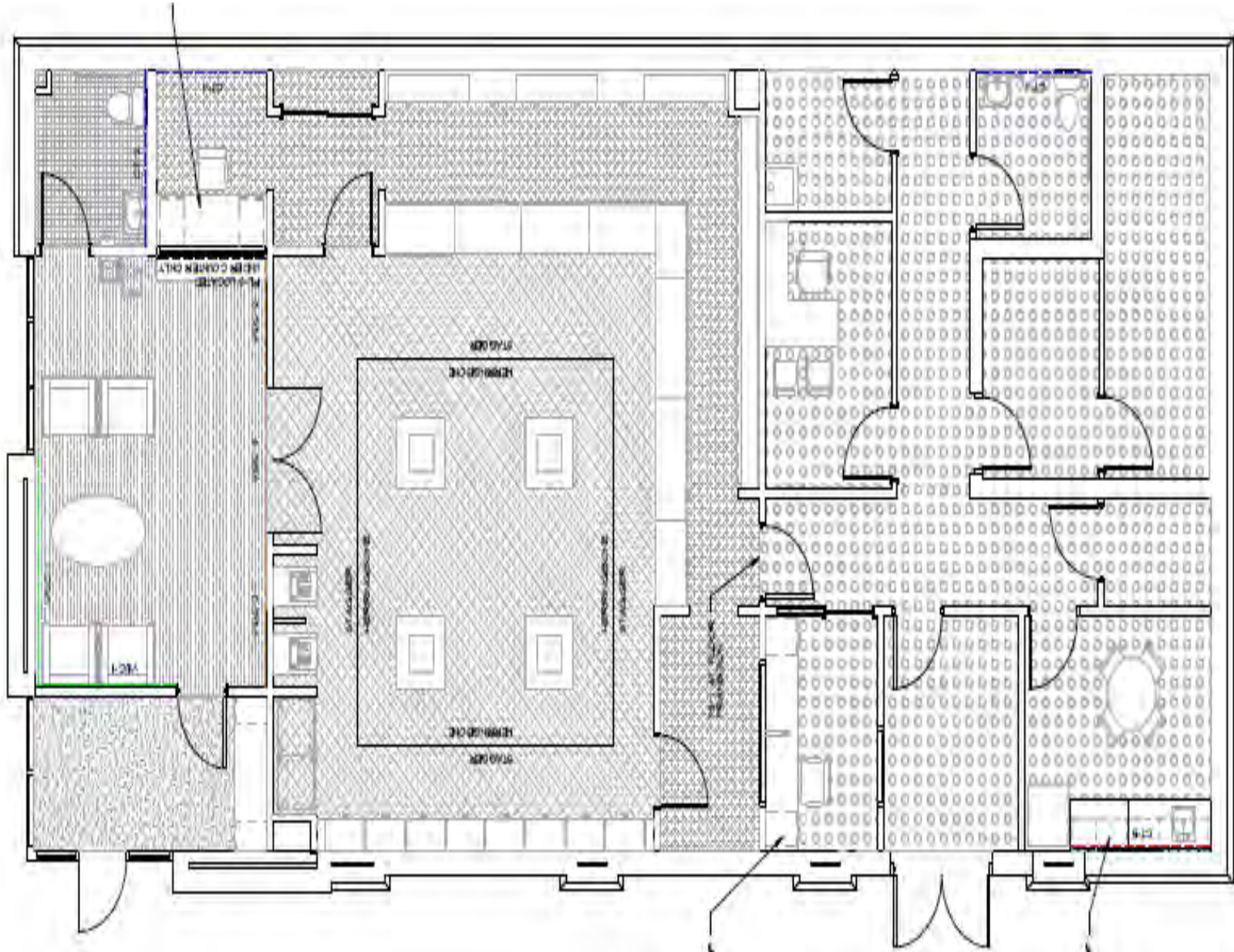
Woodward Crossings - 36800 Woodward Avenue | Suite 301 | Bloomfield Hills, MI 48304 | 248.220.1110 | c3cre.com

One Harbour Place - 777 South Harbour Island Boulevard | Suite 250 | Tampa, FL 33602 | 813.212.9155 | info@c3cre.com



# REDFORD TOWNSHIP - MUNICIPAL APPROVED/UNDER CONSTRUCTION RETAILER FACILITY

26629 PLYMOUTH ROAD | REDFORD TOWNSHIP, MI 48239



**C3 CRE, LLC**

Woodward Crossings - 36800 Woodward Avenue | Suite 301 | Bloomfield Hills, MI 48304 | 248.220.1110 | c3cre.com

One Harbour Place - 777 South Harbour Island Boulevard | Suite 250 | Tampa, FL 33602 | 813.212.9155 | info@c3cre.com



# REDFORD TOWNSHIP - MUNICIPAL APPROVED/UNDER CONSTRUCTION RETAILER FACILITY

26629 PLYMOUTH ROAD | REDFORD TOWNSHIP, MI 48239



**C3 CRE, LLC**

Woodward Crossings - 36800 Woodward Avenue | Suite 301 | Bloomfield Hills, MI 48304 | 248.220.1110 | c3cre.com

One Harbour Place - 777 South Harbour Island Boulevard | Suite 250 | Tampa, FL 33602 | 813.212.9155 | info@c3cre.com



# REDFORD TOWNSHIP - MUNICIPAL APPROVED/UNDER CONSTRUCTION RETAILER FACILITY

26629 PLYMOUTH ROAD | REDFORD TOWNSHIP, MI 48239



C3 CRE, LLC

Woodward Crossings - 36800 Woodward Avenue | Suite 301 | Bloomfield Hills, MI 48304 | 248.220.1110 | c3cre.com

One Harbour Place - 777 South Harbour Island Boulevard | Suite 250 | Tampa, FL 33602 | 813.212.9155 | info@c3cre.com





## CORBIN YALDOO

Founder/President  
248.220.1110 x01  
corbin@c3cre.com



## CHARLES AL-SHEIKH

Sales Associate  
248.220.1110 x02  
charlie@c3cre.com

---

### SERVICES

Buyer and Seller Representation  
Land Brokerage

Cannabis Acquisitions and Dispositions  
Portfolio and Surplus Property Sales

Investment Sales  
Site Selection and Location Strategy

#### **C3 CRE, LLC**

Woodward Crossings - 36800 Woodward Avenue | Suite 301 | Bloomfield Hills, MI 48304 | 248.220.1110 | c3cre.com

One Harbour Place - 777 South Harbour Island Boulevard | Suite 250 | Tampa, FL 33602 | 813.212.9155 | info@c3cre.com



# REDFORD TOWNSHIP - MUNICIPAL APPROVED/UNDER CONSTRUCTION RETAILER FACILITY

26629 PLYMOUTH ROAD | REDFORD TOWNSHIP, MI 48239

## General:

C3 CRE, LLC is a licensed real estate brokerage, and our employees and contractors are not a substitute for qualified legal, tax or accounting advice. We do not provide such advice. We recommend obtaining the advice of qualified legal counsel and other professionals. Any assistance we may provide in reviewing legal documents is for guidance as a courtesy only. Our agents have no authority to contractually bind any client.

All property information is subject to the possibility of errors, omissions, change of price or other terms or conditions, prior sale, lease or financing, and withdrawal without notice. Delays, omissions and inaccuracies may arise due to a number of factors, including changes in laws.

We obtain information from sources we believe are reliable, but we provide no guaranty or warranty concerning its accuracy. Any projections, estimates, future plans, and forward-looking statements are based on assumptions, subject to uncertainty, and may vary from actual results. All information should be independently verified.

## Affiliations:

We may have relationships with companies we recommend or with whom we conduct business, including lenders, real estate brokers, loan brokers, insurance agents and others. We never require use of any company as a condition of our services. You should review each provider's fees, rates, terms of service and other relevant information.

## Cannabis Industry Regulation:

Our services to those in the cannabis industry are limited by state laws relating to medical and adult use cannabis operations. All cannabis-related business is currently illegal under U.S. federal law. Nothing contained on our website or other marketing materials nor any of our services is intended to assist in any violation of law. Our cannabis-related marketing materials are intended for use in jurisdictions in which cannabis is legal. Both Michigan law and municipal ordinances have licensing and permitting requirements and processes for cannabis-related businesses. You should consult an attorney or other knowledgeable professional on such matters.

## Real Estate Agency Relationships:

*Seller's Agent* - A seller's agent, under a listing agreement with the seller, acts solely on behalf of the seller. A seller can authorize a seller's agent to work with subagents, buyer's agents and/or transaction coordinators. A subagent is one who has agreed to work with the listing agent, and who, like the listing agent, acts solely on behalf of the seller. Seller's agents and subagents will disclose to the seller known information about the buyer which may be used to the benefit of the seller. Individual services may be waived by the seller through execution of a limited service agreement.

*Buyer's Agent* - A buyer's agent, under a buyer's agency agreement with the buyer, acts solely on behalf of the buyer. Buyer's agents and subagents will disclose to the buyer known information about the seller which may be used to benefit the buyer. Individual services may be waived by the buyer through execution of a limited service agreement.

*Dual Agents* - A real estate licensee can be the agent of both the seller and the buyer in a transaction, but only with the knowledge and informed consent, in writing, of both the seller and the buyer. In such a dual agency situation, the agent will not be able to disclose all known information to either the seller or the buyer. The obligations of a dual agent are subject to any specific provisions set forth in any agreement between the dual agent, the seller, and the buyer.

## C3 CRE, LLC

Woodward Crossings - 36800 Woodward Avenue | Suite 301 | Bloomfield Hills, MI 48304 | 248.220.1110 | c3cre.com

One Harbour Place - 777 South Harbour Island Boulevard | Suite 250 | Tampa, FL 33602 | 813.212.9155 | info@c3cre.com

