

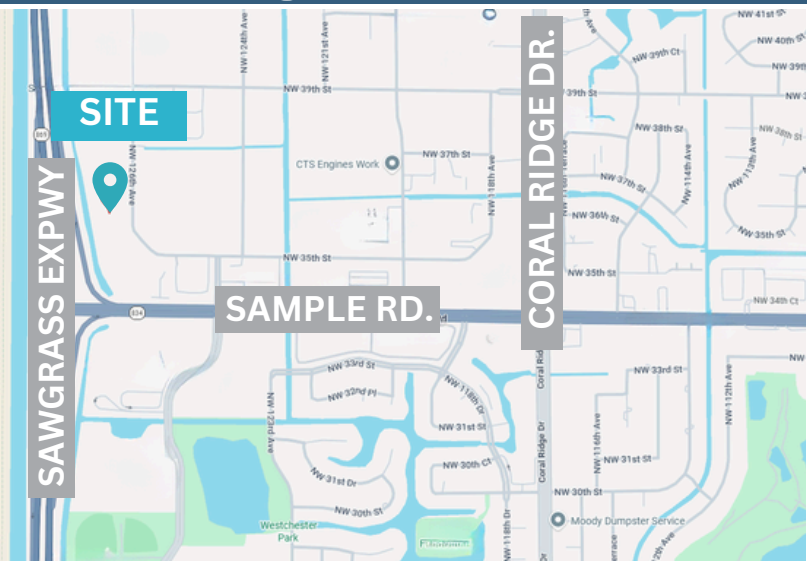
FOR SALE

OFFICE / WAREHOUSE



3660 NW 126th Ave, Unit 7
Coral Springs, FL

1,457 +/- SQFT



- Located in Coral Springs Corporate Park
- Approx. 45% office, 55% warehouse
- Welcoming reception area
- 1 roll-up garage door (10'W x 12'H)
- Warehouse has 18' clear ceilings height
- Available for immediate move-in upon closing
- IRD Zoning
- Easy access to Sawgrass Expressway

Terms Negotiable

Call 954.224.8773!

TREC
Total Real Estate Consultants Inc.
www.trecfl.com



JOE PELAYO, CCIM, SIOR
BROKER
trec@joepelayo.com
954.224.8773



GEORGE PELAYO
BROKER ASSOCIATE
george@trecfl.com
954.482.1330

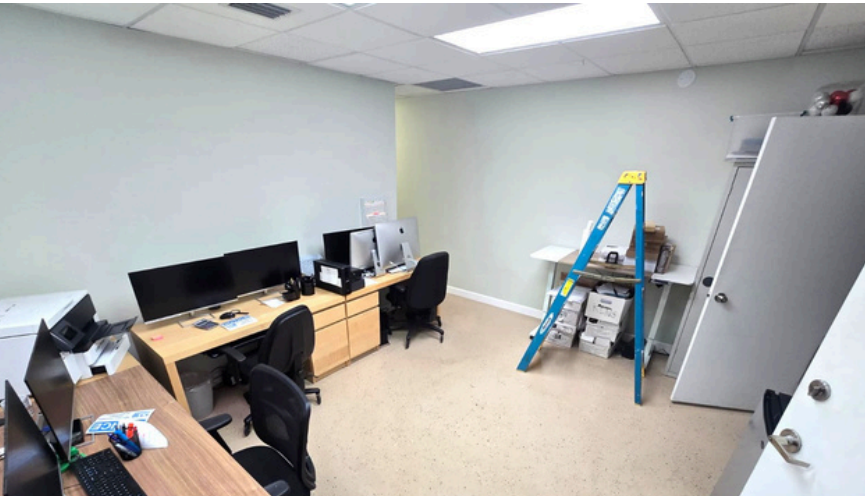
NOTICE: This information has been obtained from sources believed to be reliable but has not been verified. No warranty or representation, express or implied, is made as to the condition/legal adjustments of the property (or properties) referenced or as to the accuracy or completeness of the information contained, and same is submitted subject to errors, omissions, change of price, retail or other conditions, including but not limited to withdrawal without notice, and to any special listing conditions imposed by the property owner.

FOR SALE

OFFICE / WAREHOUSE

3660 NW 126th Ave, Unit 7
Coral Springs, FL

1,457 +/- SQFT



JOE PELAYO, CCIM, SIOR
BROKER
trec@joepelayo.com
954.224.8773

TREC
Total Real Estate Consultants Inc.
www.trecfl.com

GEORGE PELAYO
BROKER ASSOCIATE
george@trecfl.com
954.482.1330



NOTICE: This information has been obtained from sources believed to be reliable but has not been verified. No warranty or representation, express or implied, is made as to the condition/legal adjustments of the property (or properties) referenced or as to the accuracy or completeness of the information contained, and same is submitted subject to errors, omissions, change of price, retail or other conditions, including but not limited to withdrawal without notice, and to any special listing conditions imposed by the property owner.