

GAYLORD - NEW CONSTRUCTION INDUSTRIAL WAREHOUSE

2309 GREY WOLF TRAIL | GAYLORD, MI 49735



FOR SALE | FOR LEASE

C3 CRE, LLC | 36800 Woodward Avenue | Suite 301 | Bloomfield Hills, MI 48304 | 248.220.1110 | c3cre.com



GAYLORD - NEW CONSTRUCTION INDUSTRIAL WAREHOUSE

2309 GREY WOLF TRAIL | GAYLORD, MI 49735

PROPERTY HIGHLIGHTS

- Newly constructed industrial warehouse available for sale or for lease.
- The site is presented in near whitebox condition with minimal finishing touches needed to obtain a Certificate of Occupancy.
- The building features one (1) garage door and floor drains, and will need a parking lot completed.
- Zoning is M-1 Light Industrial and could be used for many traditional uses, including warehouse, storage, retail, automotive garage, and many more.
- This site was also approved for a Cannabis Class B Cultivation License. An operator would need to apply for a new license.
- Great synergy in the immediate marketplace surrounded by a dense residential population, along with several local and national tenants.

DEMOGRAPHICS	5 MILES	10 MILES	20 MILES
Total Households	5,814	10,106	18,880
Total Population	13,996	24,418	45,072
Average HH Income	\$81,266	\$86,845	\$85,825

BUILDING SIZE

4,070 SF

LAND SIZE

1.05 Acres

SALES PRICE

\$375,000

LEASE PRICE

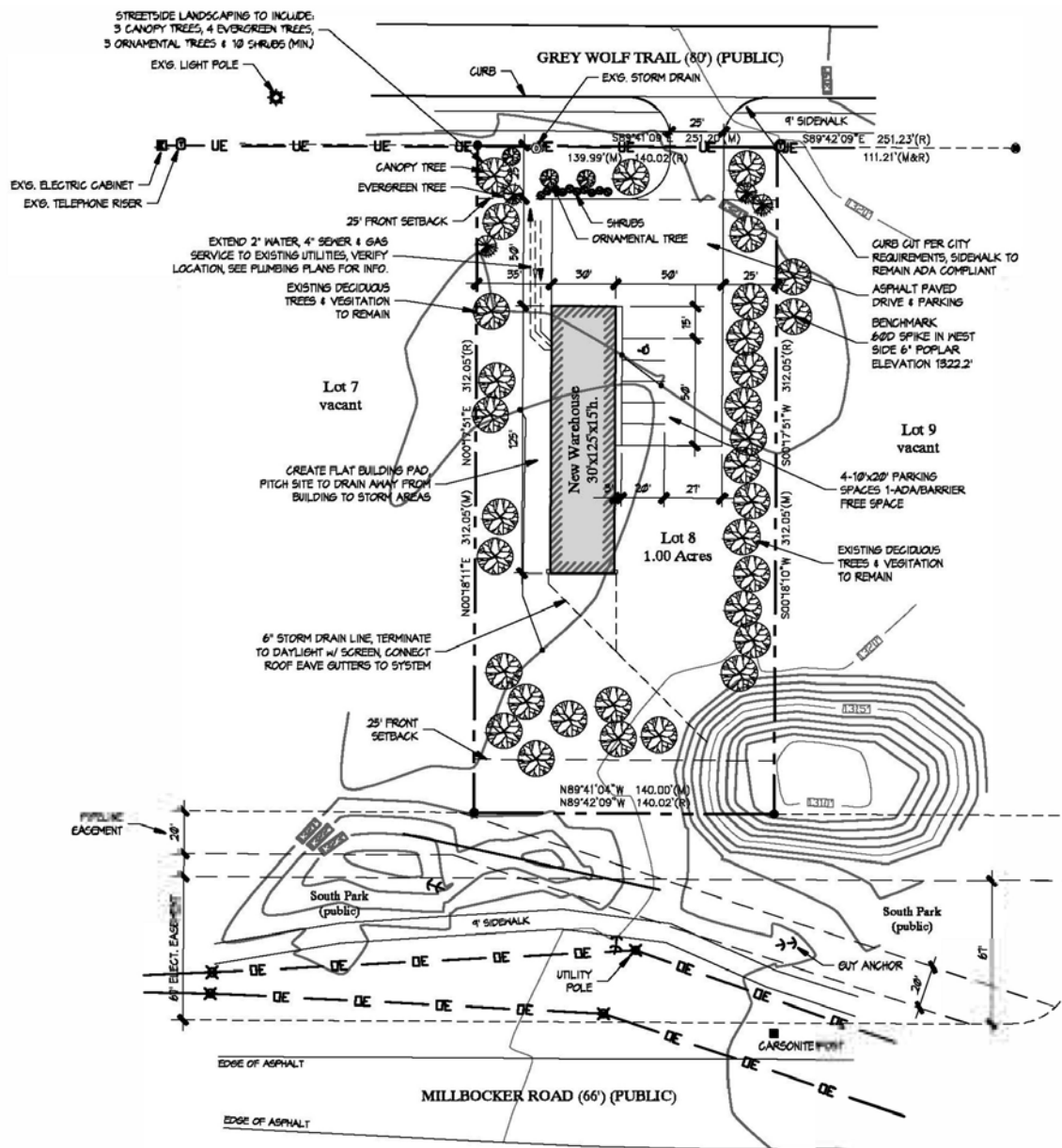
\$10.00 PSF + NNN

AREA TENANTS



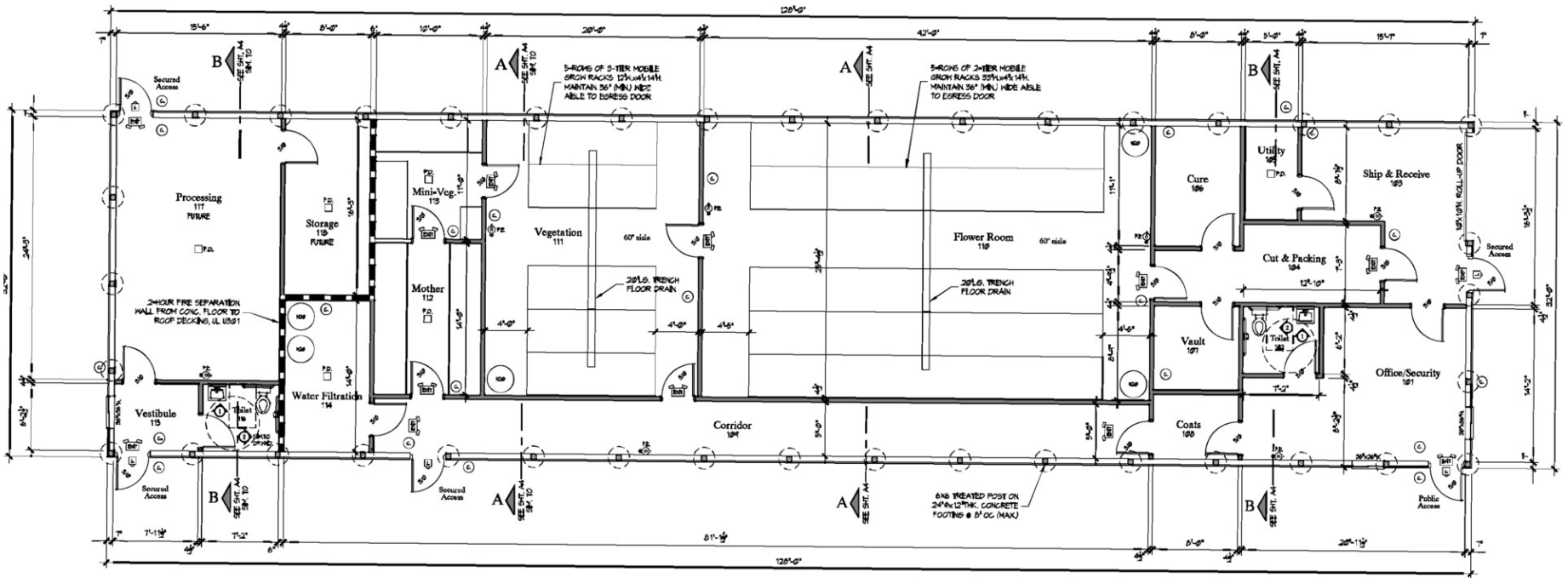
GAYLORD - NEW CONSTRUCTION INDUSTRIAL WAREHOUSE

2309 GREY WOLF TRAIL | GAYLORD, MI 49735



GAYLORD - NEW CONSTRUCTION INDUSTRIAL WAREHOUSE

2309 GREY WOLF TRAIL | GAYLORD, MI 49735



GAYLORD - NEW CONSTRUCTION INDUSTRIAL WAREHOUSE

2309 GREY WOLF TRAIL | GAYLORD, MI 49735



GAYLORD - NEW CONSTRUCTION INDUSTRIAL WAREHOUSE

2309 GREY WOLF TRAIL | GAYLORD, MI 49735



GAYLORD - NEW CONSTRUCTION INDUSTRIAL WAREHOUSE

2309 GREY WOLF TRAIL | GAYLORD, MI 49735





MIKE LUMETTA

Sales Associate
248.220.1110 x11
mikel@c3cre.com



HARRY BARASH

Sales Associate
248.220.1110 x10
harry@c3cre.com

SERVICES

Buyer and Seller Representation
Land Brokerage

Cannabis Acquisitions and Dispositions
Portfolio and Surplus Property Sales

Investment Sales
Site Selection and Location Strategy



GAYLORD - NEW CONSTRUCTION INDUSTRIAL WAREHOUSE

2309 GREY WOLF TRAIL | GAYLORD, MI 49735

General:

C3 CRE, LLC is a licensed real estate brokerage, and our employees and contractors are not a substitute for qualified legal, tax or accounting advice. We do not provide such advice. We recommend obtaining the advice of qualified legal counsel and other professionals. Any assistance we may provide in reviewing legal documents is for guidance as a courtesy only. Our agents have no authority to contractually bind any client.

All property information is subject to the possibility of errors, omissions, change of price or other terms or conditions, prior sale, lease or financing, and withdrawal without notice. Delays, omissions and inaccuracies may arise due to a number of factors, including changes in laws.

We obtain information from sources we believe are reliable, but we provide no guaranty or warranty concerning its accuracy. Any projections, estimates, future plans, and forward-looking statements are based on assumptions, subject to uncertainty, and may vary from actual results. All information should be independently verified.

Affiliations:

We may have relationships with companies we recommend or with whom we conduct business, including lenders, real estate brokers, loan brokers, insurance agents and others. We never require use of any company as a condition of our services. You should review each provider's fees, rates, terms of service and other relevant information.

Cannabis Industry Regulation:

Our services to those in the cannabis industry are limited by state laws relating to medical and adult use cannabis operations. All cannabis-related business is currently illegal under U.S. federal law. Nothing contained on our website or other marketing materials nor any of our services is intended to assist in any violation of law. Our cannabis-related marketing materials are intended for use in jurisdictions in which cannabis is legal. Both Michigan law and municipal ordinances have licensing and permitting requirements and processes for cannabis-related businesses. You should consult an attorney or other knowledgeable professional on such matters.

Real Estate Agency Relationships:

Seller's Agent - A seller's agent, under a listing agreement with the seller, acts solely on behalf of the seller. A seller can authorize a seller's agent to work with subagents, buyer's agents and/or transaction coordinators. A subagent is one who has agreed to work with the listing agent, and who, like the listing agent, acts solely on behalf of the seller. Seller's agents and subagents will disclose to the seller known information about the buyer which may be used to the benefit of the seller. Individual services may be waived by the seller through execution of a limited service agreement.

Buyer's Agent - A buyer's agent, under a buyer's agency agreement with the buyer, acts solely on behalf of the buyer. Buyer's agents and subagents will disclose to the buyer known information about the seller which may be used to benefit the buyer. Individual services may be waived by the buyer through execution of a limited service agreement.

Dual Agents - A real estate licensee can be the agent of both the seller and the buyer in a transaction, but only with the knowledge and informed consent, in writing, of both the seller and the buyer. In such a dual agency situation, the agent will not be able to disclose all known information to either the seller or the buyer. The obligations of a dual agent are subject to any specific provisions set forth in any agreement between the dual agent, the seller, and the buyer.

