

FOR SALE

629 PARSIPPANY ROAD
PARSIPPANY, NJ

FIRST TIME ON MARKET FOR SALE
GREAT INVESTMENT PROPERTY, FULLY LEASED

BUILDING FEATURES

- Approx. 30,000 sf of Office on 2.1 Acres
- Fully Leased Office Building with 10+ Years on Lease
- Easy Access to Routes 287, 80, 24
- Elevator to All Floors
- Ample Covered Parking
- Zoning B-2 Business, Highway Development
- Highly Visible with Prominent Signage
- Prime Location in High Traffic Area

Asking Sale Price: \$4,999,999.00

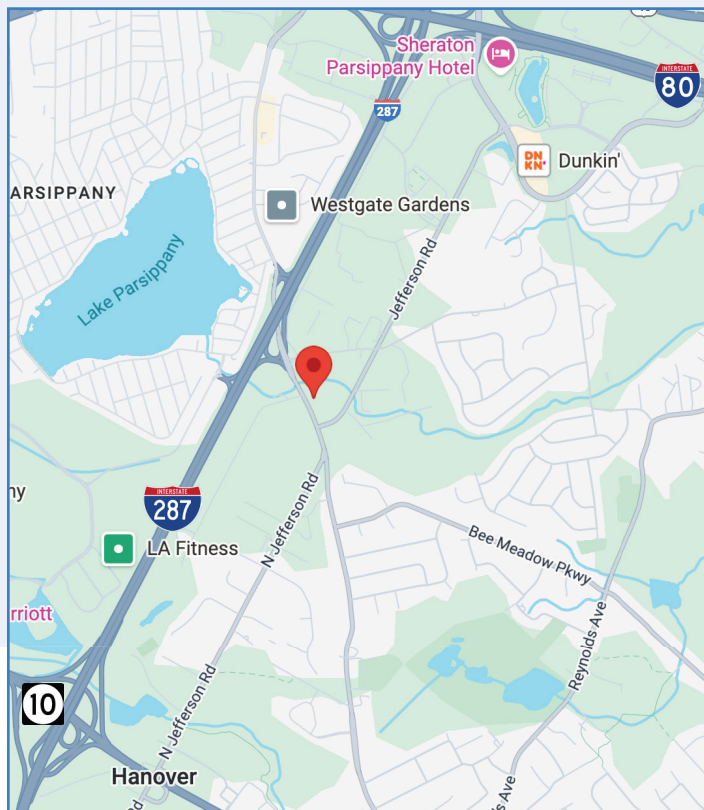
For more information contact:

NANCY STANTON-TUCKMAN

C: 973.216.7107

O: 973.884.4444 ext. 19

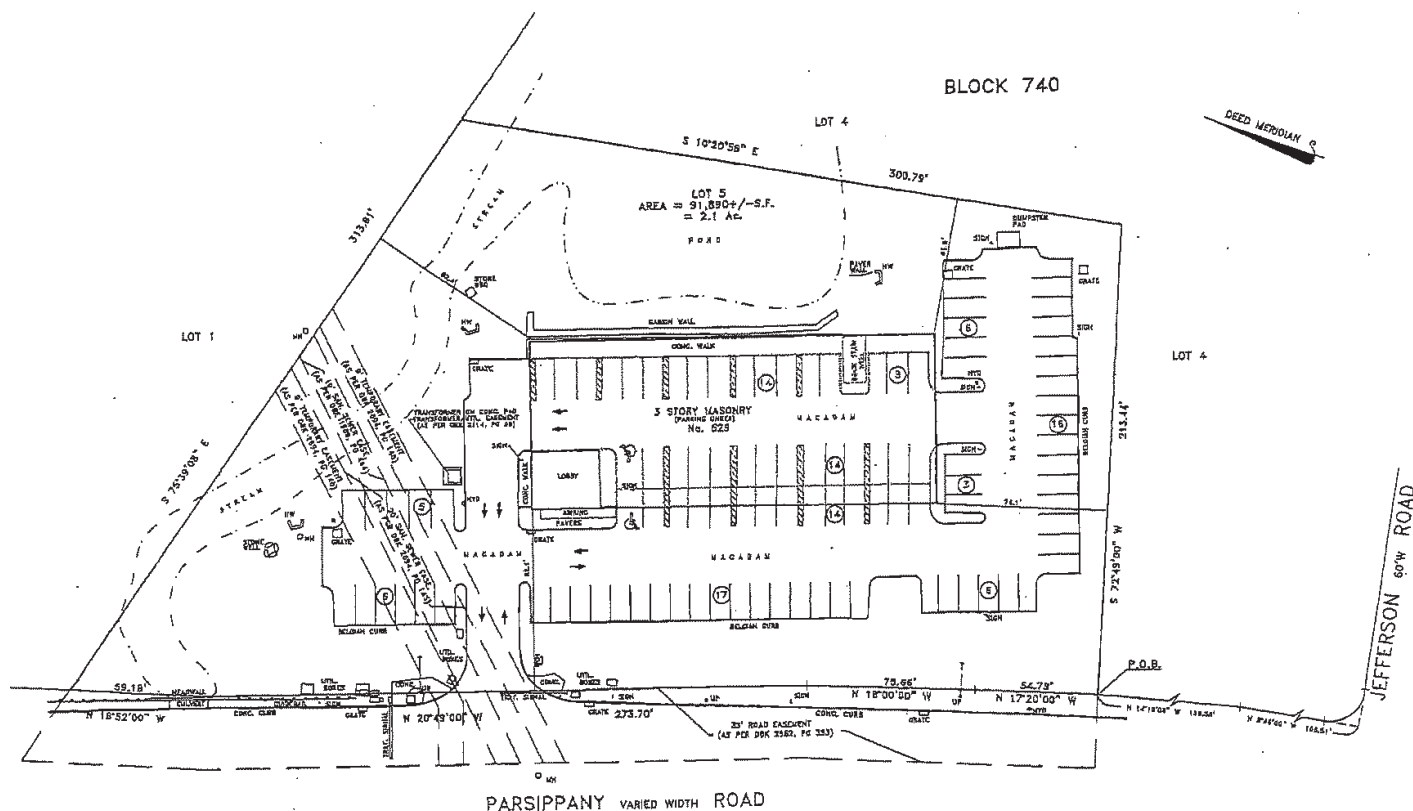
ntuckman@newmarkrealestate.com



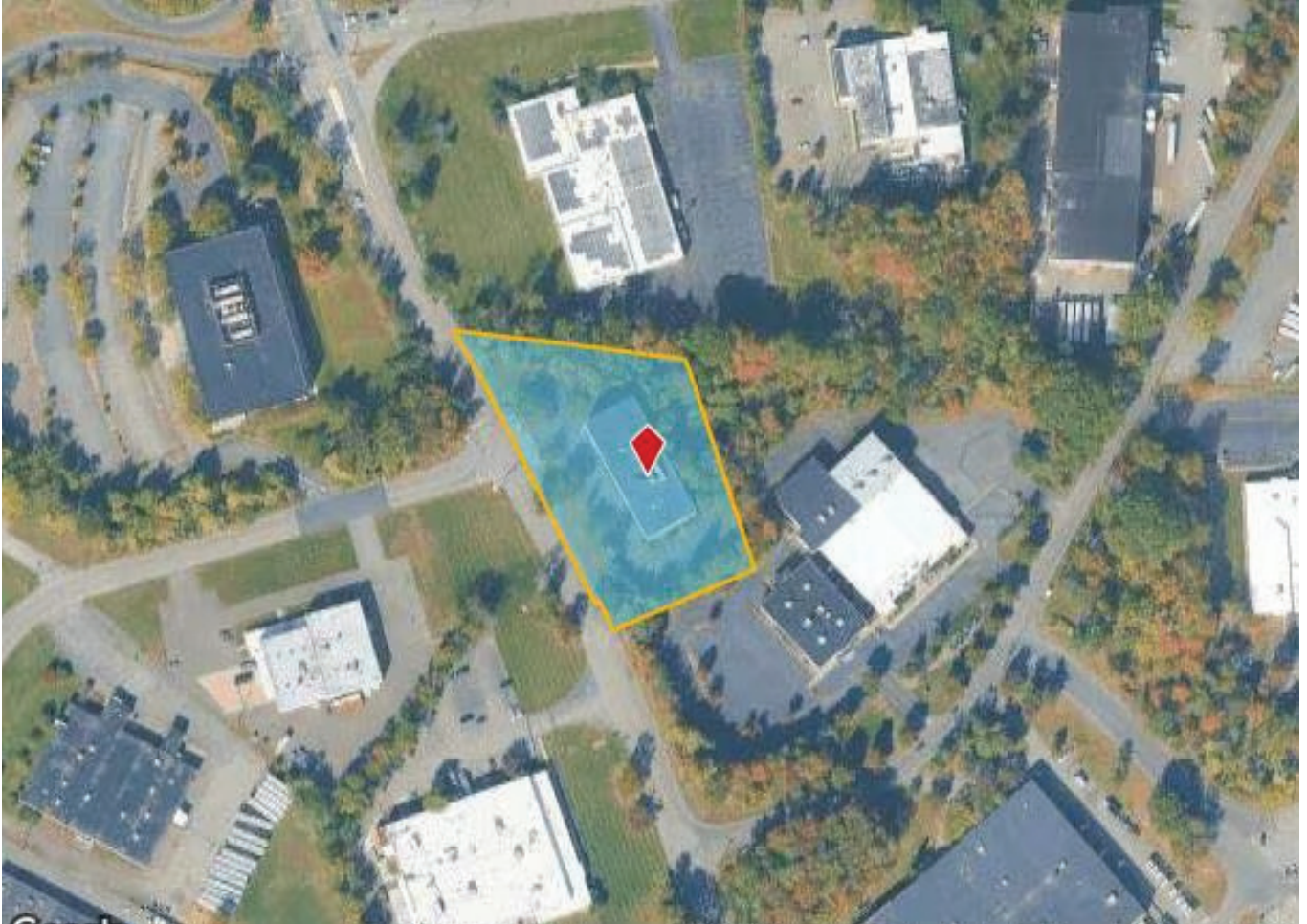
NewmarkRealEstate.com | 973.884.4444 | 7 E. Frederick Place Suite 500 Cedar Knolls New Jersey 07927

2026 Newmark Associates CRE. Information obtained from sources deemed to be reliable. However, no guarantee, warrant or representation is made as to accuracy of the information presented which is submitted subject to errors, omission, change of price, rental or other conditions, prior sale lease, financing or withdrawal without notice. Projections, opinions, assumptions or estimates are provided for example only, and may not represent current or future performance. Interested parties should consult their tax and legal advisors and conduct a thorough investigation of the property and any prospective transaction.

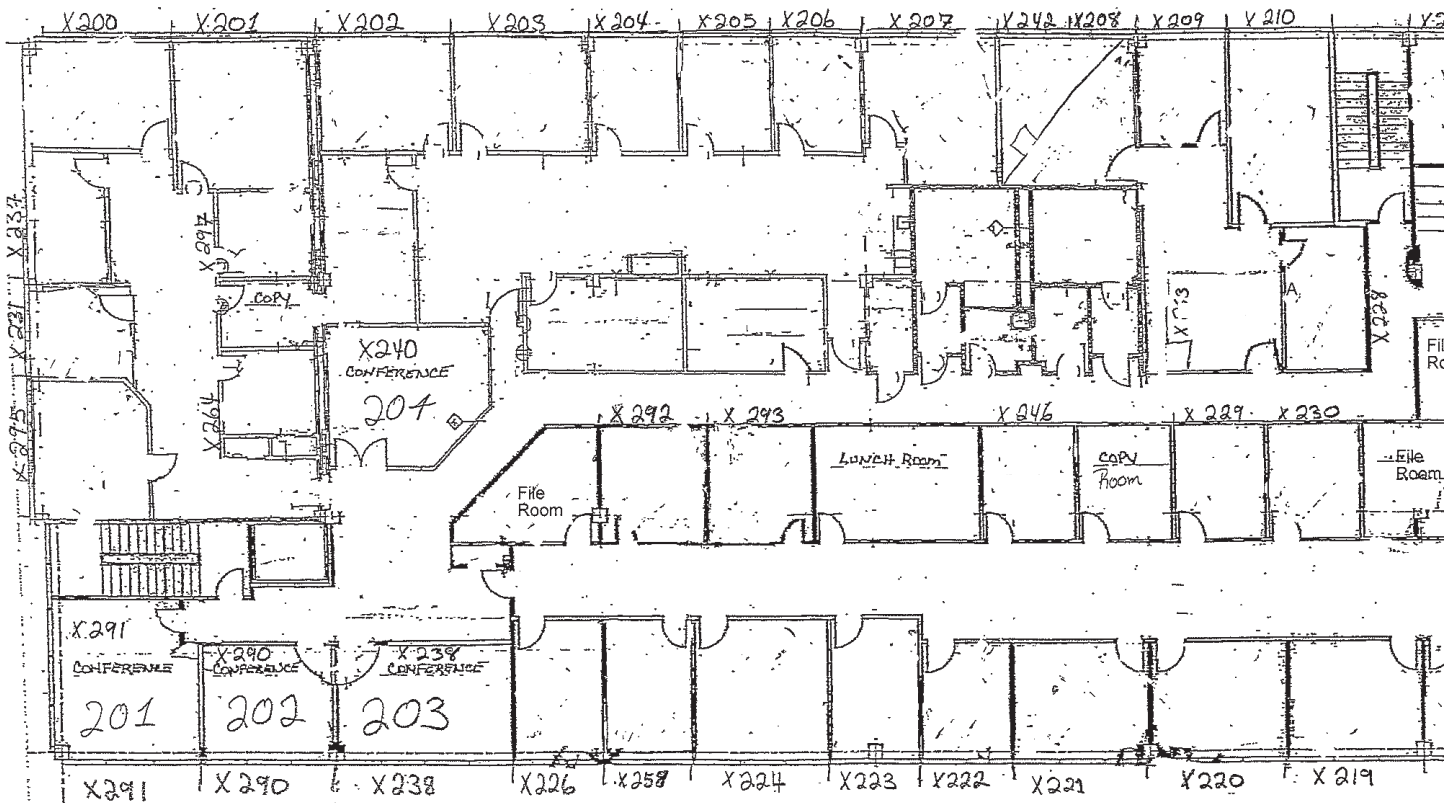
Site Plan



Aerial

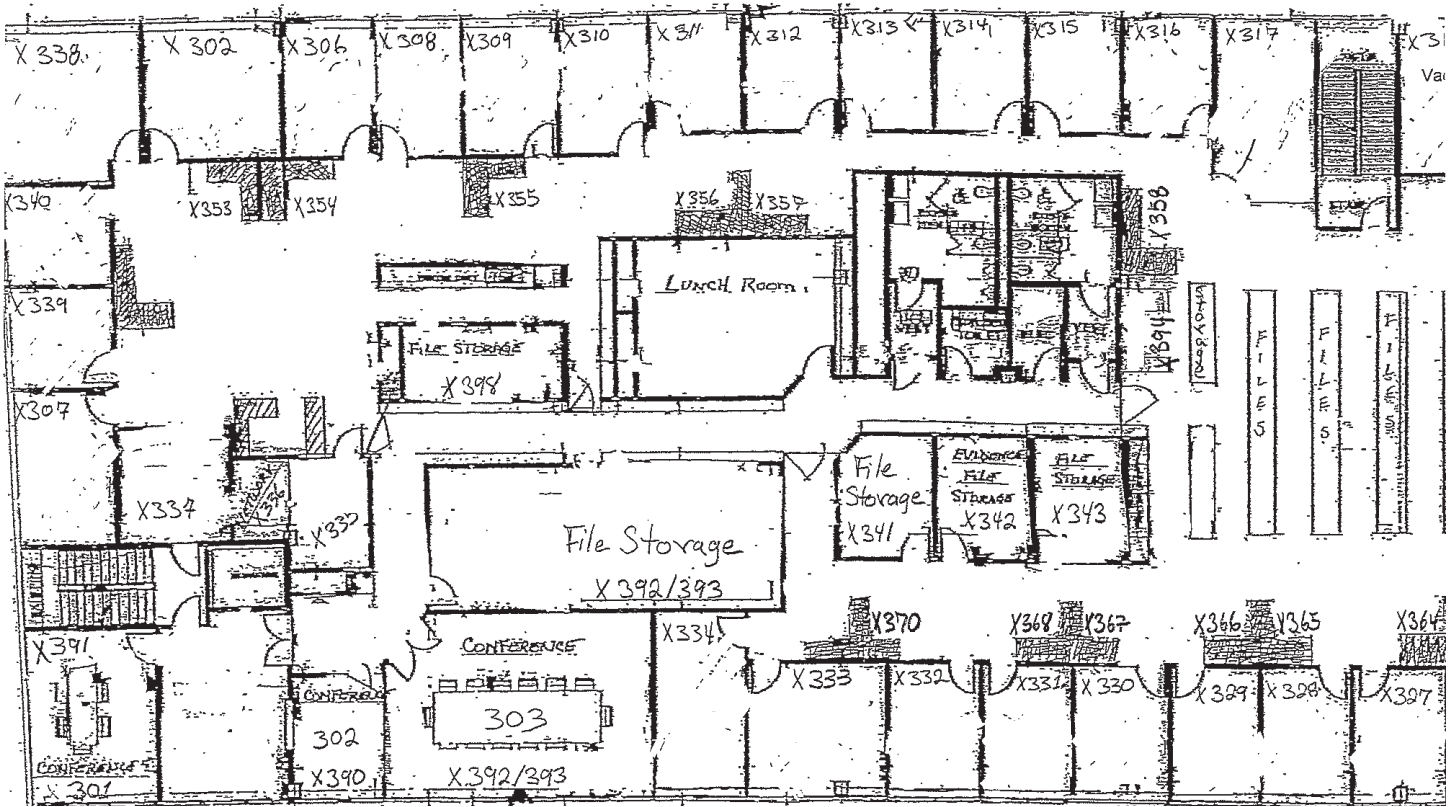


2nd Floor



Floor Plan Not Drawn to Scale.

3rd Floor



Floor Plan Not Drawn to Scale.