

FOR SALE FLORHAM PARK, NJ

MOVE-IN READY OFFICE/MEDICAL CONDO W CARPORT

UNIT FEATURES

Unit 103: +/- 1400 sf

- Move-In Ready
- Waiting/Reception Area
- Four (4) Offices
- Eat-In Kitchen
- Upgrades Throughout
- Bay Window/Juliet Balcony
- CARPORT INCLUDED

Asking Sale Price: \$450,000.00

PROPERTY FEATURES

- Located in premier complex near the center of Florham Park
- Abundant parking
- Near local amenities including Trader Joe's/ Starbucks/Dunkin'/Kings/CVS/Panera/ Walgreens/McDonald's
- Ideally situated near Routes 24/78/287/10/280
- Under NEW Management—Common area upgrades coming soon!

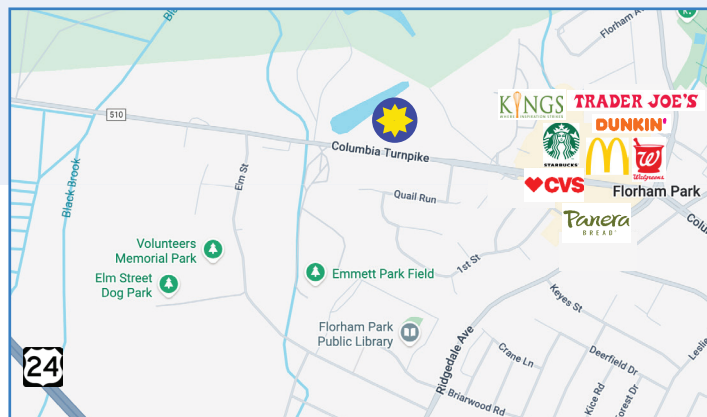
For more information contact:

HELENE ELBAUM

C: 201.320.3430

O: 973.884.4444 ext. 26

helbaum@newmarkrealestate.com



NewmarkRealEstate.com | 973.884.4444 | 7 E. Frederick Place Suite 500 Cedar Knolls New Jersey 07927

2025 Newmark Associates CRE. Information obtained from sources deemed to be reliable. However, no guarantee, warrant or representation is made as to accuracy of the information presented which is submitted subject to errors, omission, change of price, rental or other conditions, prior sale lease, financing or withdrawal without notice. Projections, opinions, assumptions or estimates are provided for example only, and may not represent current or future performance. Interested parties should consult their tax and legal advisors and conduct a thorough investigation of the property and any prospective transaction.



Waiting Room/Reception



Office #1

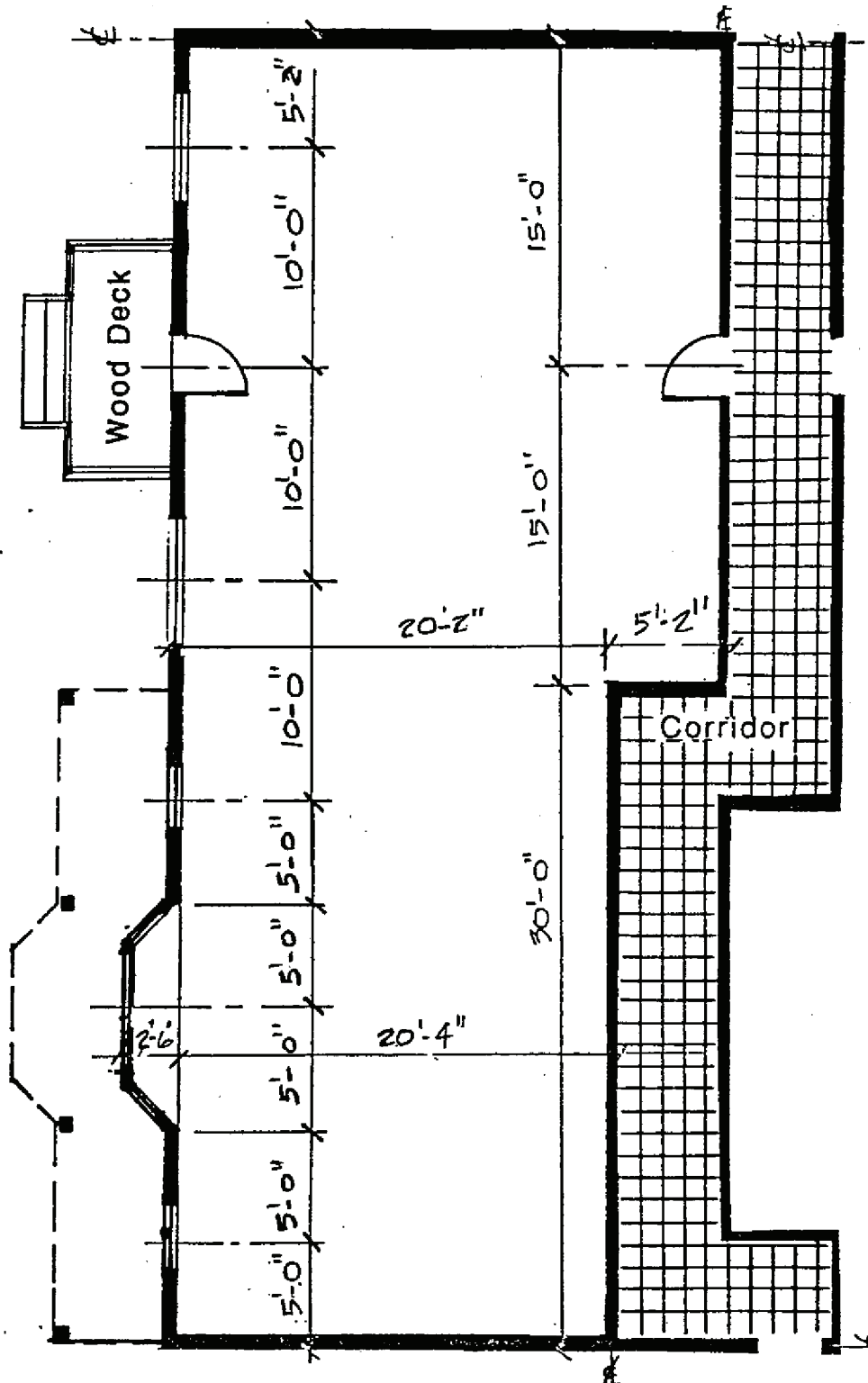


Office #2



Office #3

Unit 103: +/- 1400 sf



Floor plan may not be drawn to scale.