

FOR SALE LAND DEVELOPMENT OPPORTUNITY

MOTIVATED SELLER



3939 Powerline Rd., Oakland Park, FL
Sweet Acacia Development

49,467 +/- SQFT (1.135 Acre)



- Current conceptual site plans consist of approximately **65,000 +/- SQFT building**
- Under the Live Local Act, there would be a total of **84 units** (33 at affordable housing, 51 at market rate) and first floor would be at least **50% commercial usage**
- Parking: 140 total spaces (14 at surface level, and 126 with **state-of-the-art automated** vehicle storage system)
- Project above estimate around \$14 million with estimated value at exit around \$21 million (holding period 3-5 years).

Terms Negotiable

Call or text 954-224-8773!



JOE PELAYO, CCIM, SIOR
BROKER

trec@joepelayo.com

954.224.8773

TREC
Total Real Estate Consultants Inc.
www.trecfl.com

GEORGE PELAYO
BROKER ASSOCIATE

george@trecfl.com

954.482.1330



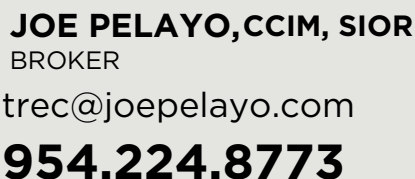
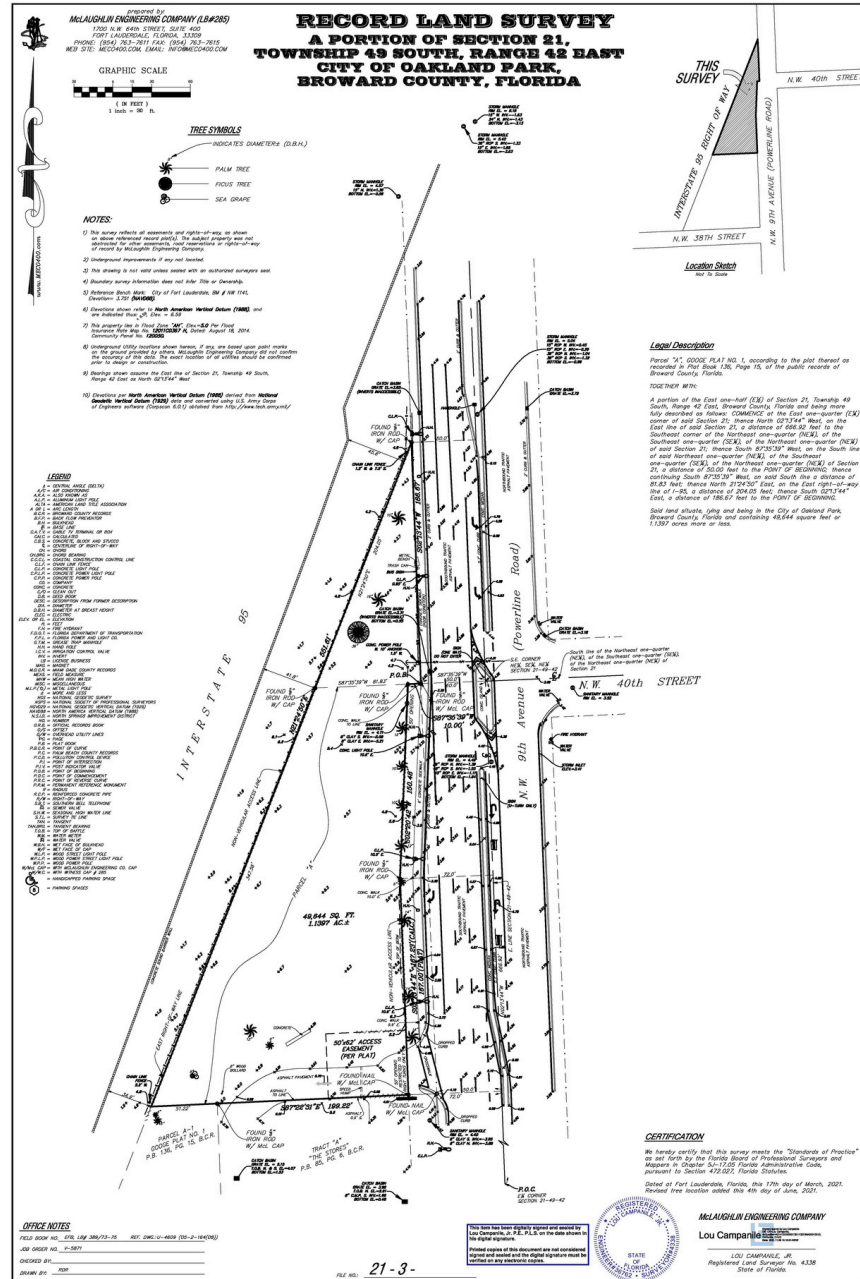
NOTICE: This information has been obtained from sources believed to be reliable but has not been verified. No warranty or representation, express or implied, is made as to the condition/legal adjustments of the property (or properties) referenced or as to the accuracy or completeness of the information contained, and same is submitted subject to errors, omissions, change of price, retail or other conditions, including but not limited to withdrawal without notice, and to any special listing conditions imposed by the property owner.

MOTIVATED SELLER

49,467 +/- SQFT (1.135 Acre)



Call or text **954-224-8773!**



NOTICE: This information has been obtained from sources believed to be reliable but has not been verified. No warranty or representation, express or implied, is made as to the condition/legal adjustments of the property (or properties) referenced or as to the accuracy or completeness of the information contained, and same is submitted subject to errors, omissions, change of price, retail or other conditions, including but not limited to withdrawal without notice, and to any special listing conditions imposed by the property owner.