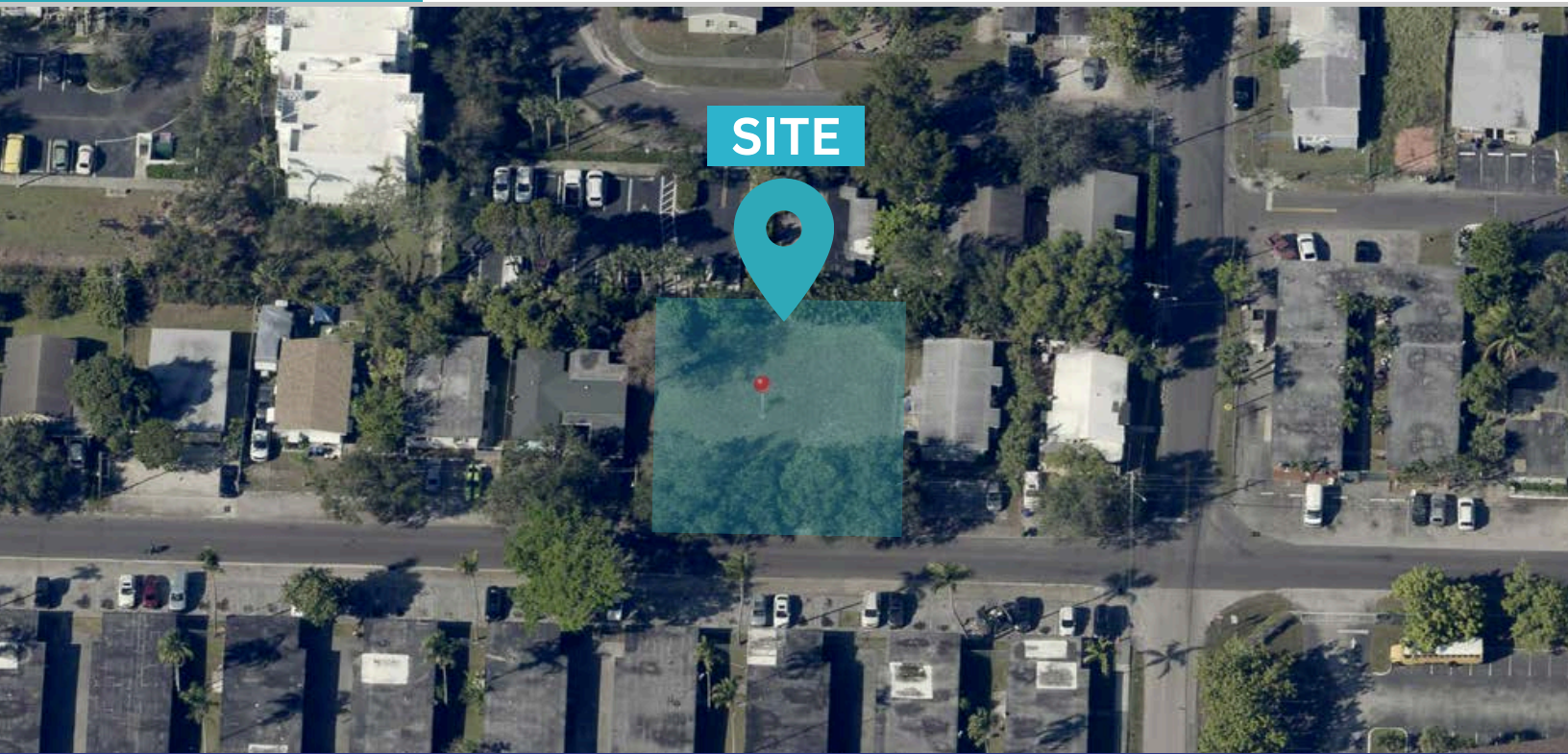


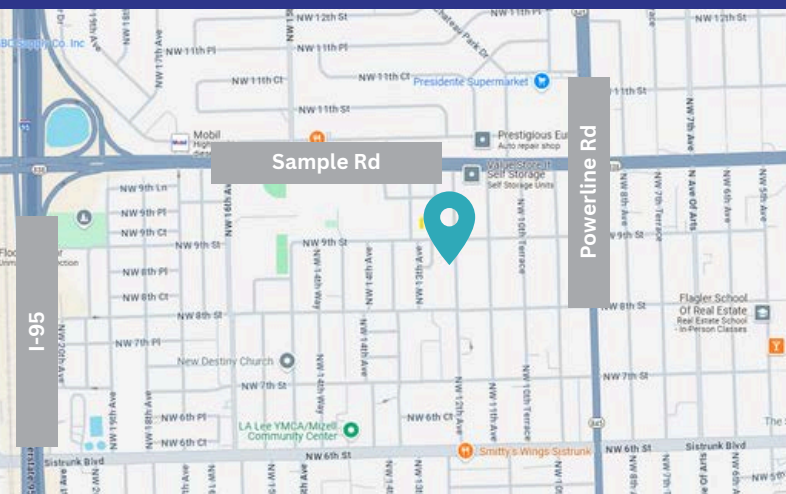
FOR SALE LAND IN FORT LAUDERDALE



SITE

833-839 NW 12th Ave, Fort Lauderdale, FL

8,975 +/- SQFT



- Rare land opportunity in Fort Lauderdale
- Zoned in Residential Multifamily Mid Rise / Medium High-Density district
- Largest cross streets are W Sunrise Blvd and Powerline Rd (right off I-95)
- Proposed **four** 2-story townhomes

TERMS NEGOTIABLE

Call or text **954-224-8773** for more information!



JOE PELAYO, CCIM, SIOR
BROKER
trec@joepelayo.com
954.224.8773

TREC
Total Real Estate Consultants Inc.
www.trecfl.com

GEORGE PELAYO
BROKER ASSOCIATE
george@trecfl.com
954.482.1330



NOTICE: This information has been obtained from sources believed to be reliable but has not been verified. No warranty or representation, express or implied, is made as to the condition/legal adjustments of the property (or properties) referenced or as to the accuracy or completeness of the information contained, and same is submitted subject to errors, omissions, change of price, retail or other conditions, including but not limited to withdrawal without notice, and to any special listing conditions imposed by the property owner.

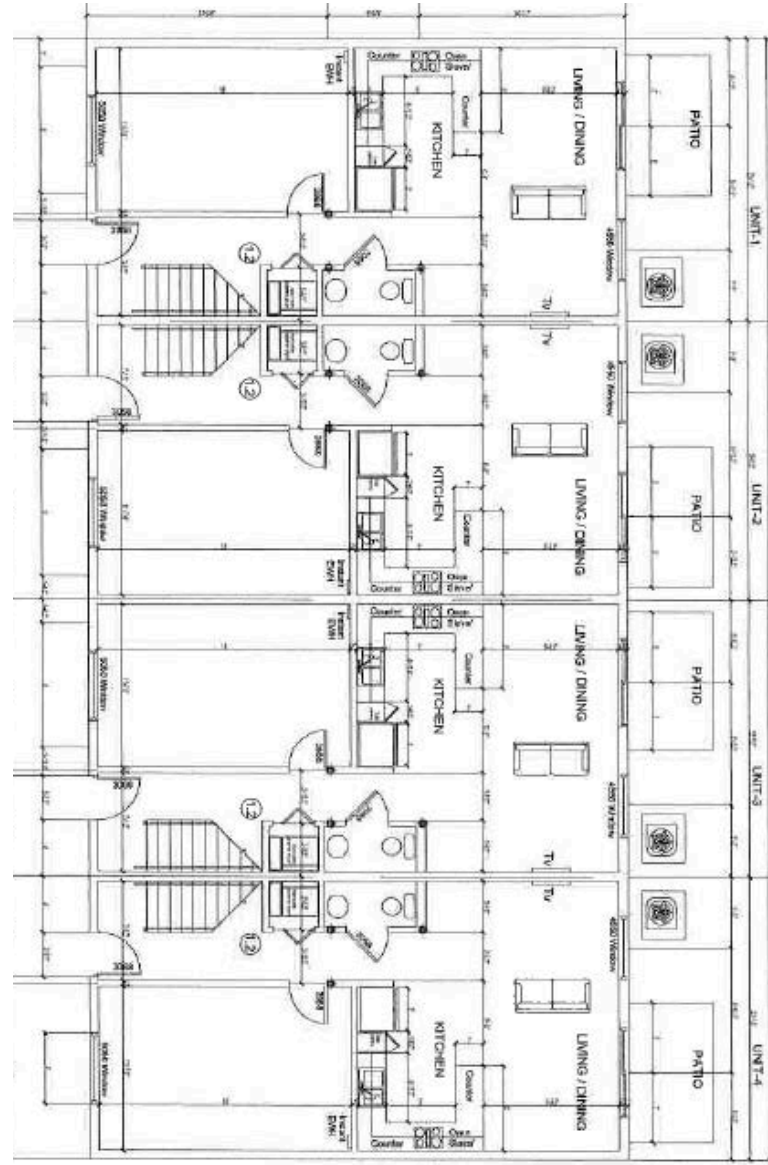
FOR SALE LAND IN FORT LAUDERDALE

833-839 NW 12th Ave, Fort Lauderdale, FL

8,975 +/- SQFT



POTENTIAL USE FLOOR PLAN - TOWNHOMES



Call or text **954-224-8773** for more information!



JOE PELAYO, CCIM, SIOR
BROKER
trec@joepelayo.com
954.224.8773

TREC
Total Real Estate Consultants Inc.
www.trecfl.com

GEORGE PELAYO
BROKER ASSOCIATE
george@trecfl.com
954.482.1330



NOTICE: This information has been obtained from sources believed to be reliable but has not been verified. No warranty or representation, express or implied, is made as to the condition/legal adjustments of the property (or properties) referenced or as to the accuracy or completeness of the information contained, and same is submitted subject to errors, omissions, change of price, retail or other conditions, including but not limited to withdrawal without notice, and to any special listing conditions imposed by the property owner.