

FOR SALE

BEDMINSTER, NJ
211 SOMERVILLE ROAD

FREESTANDING PROFESSIONAL OFFICE BUILDING FOR SALE

BUILDING FEATURES

- Approx 5100 sf, 2-story building
(Approx 2550 sf per floor)
- First floor: reception, conference room, kitchen & 9 private windowed offices
- Second floor: reception, conference room, kitchen & 8 private windowed offices
- Bullpen/secretarial areas
- 2 private bathrooms on each floor
- Printer stations/supply closets/storage
- Upscale finishes throughout

PROPERTY FEATURES

- Located in exclusive Bedminster Professional Center
- Condominium ownership
- Private parking
- Zoning: VN (Village Neighborhood)
- Local restaurants and shopping nearby
- Directly off Rts 202/206, with nearby access to Rt 78 and Rt 287
- 4.3 mi to Trump National Golf Club
- 6.6 mi to Fidler's Elbow Country Club

Asking Sale Price: \$1,500,000

For more information contact:

MARJORIE DORNE MURPHY

C: 973.722.2979

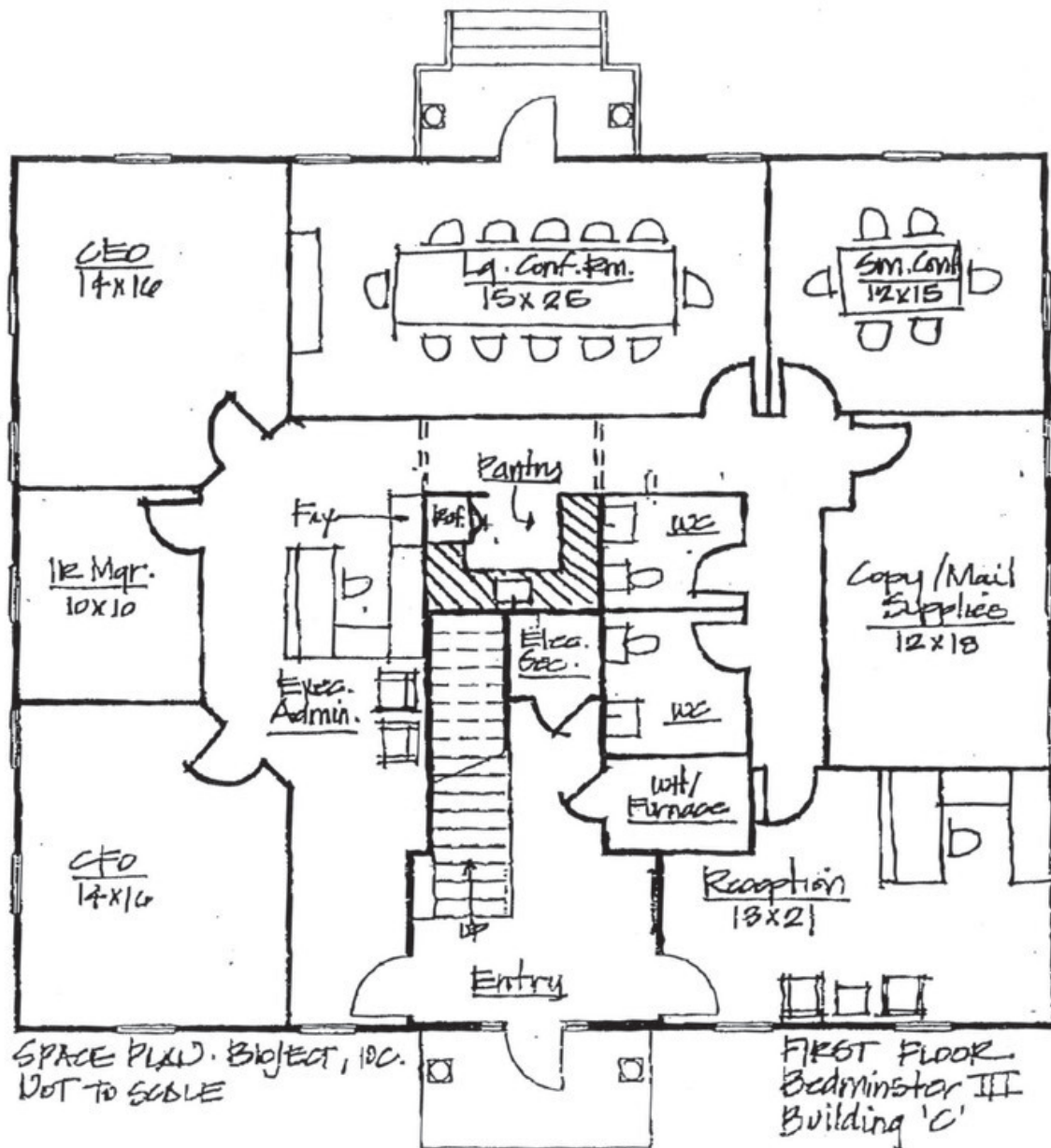
O: 973.884.4444 ext. 14

mmurphy@newmarkrealestate.com

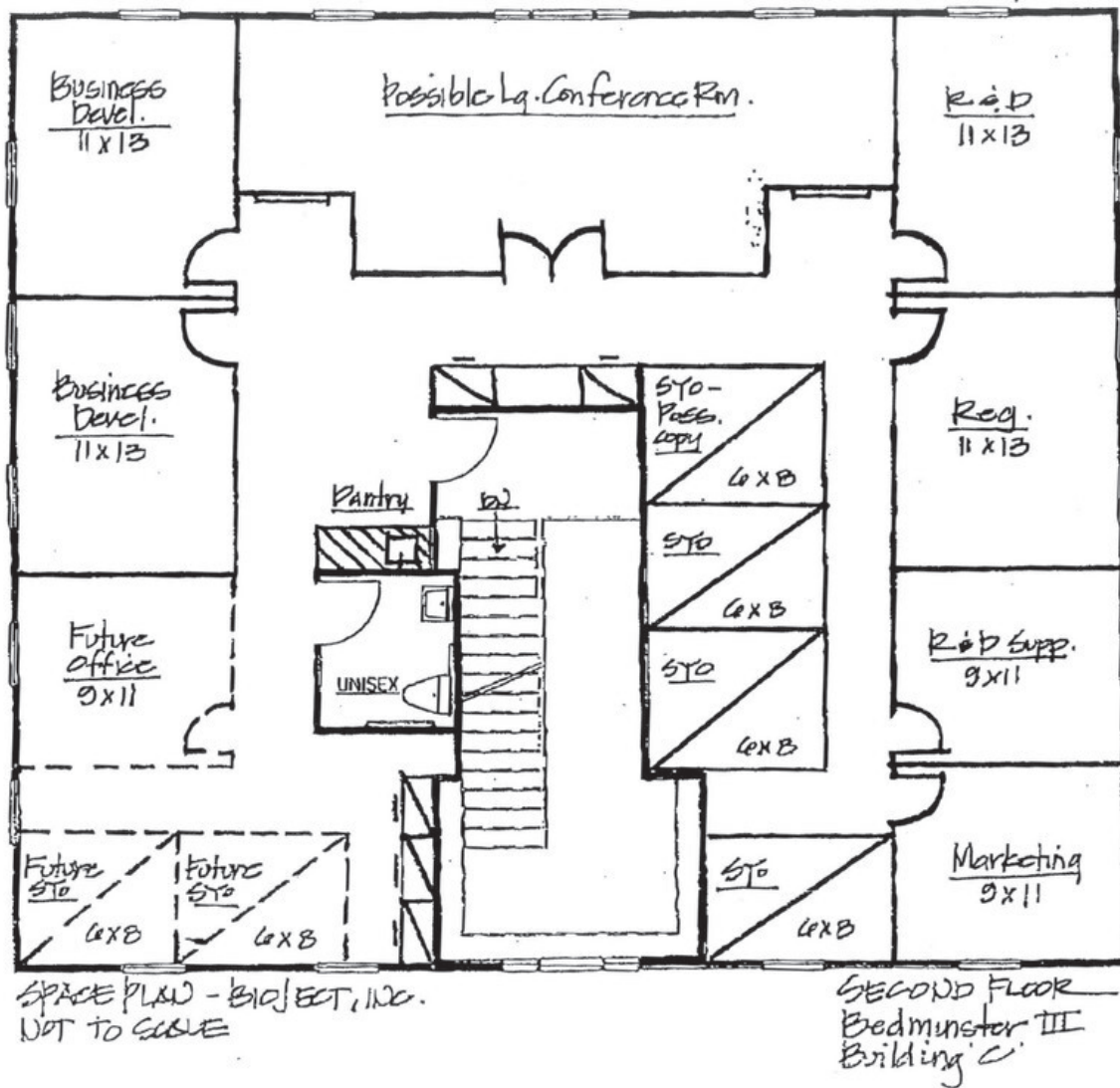


NewmarkRealEstate.com | 973.884.4444 | 7 E. Frederick Place Suite 500 Cedar Knolls New Jersey 07927

2025 Newmark Associates CRE. Information obtained from sources deemed to be reliable. However, no guarantee, warrant or representation is made as to accuracy of the information presented which is submitted subject to errors, omission, change of price, rental or other conditions, prior sale lease, financing or withdrawal without notice. Projections, opinions, assumptions or estimates are provided for example only, and may not represent current or future performance. Interested parties should consult their tax and legal advisors and conduct a thorough investigation of the property and any prospective transaction.



Floor Plan Not Drawn to Scale.



Floor Plan Not Drawn to Scale.