



**8301 S Military Trail
Boynton Beach, FL 33436**

Lot Size: 43,226 +/- SQFT

- 43,226 +/- SQFT lot situated in the heart of Boynton Beach
- Owner has floor plans and renderings available (*only pending payment of impact fees*)
- Land is zoned as CLO: Limited Office Commercial (00-Unincorporated)
- Current building plans include 2 story medical office building measuring about **10,000 +/- SQFT**

TRAFFIC COUNTS

S MILITARY TRAIL 33,000 CARS PER DAY!!

DEMOGRAPHICS

Population

1 Mile	11,563
3 Mile	127,934
5 Mile	313,228

**PRICE
NEGOTIABLE**



JOE PELAYO, CCIM, SIOR
BROKER

trec@joepelayo.com
954.224.8773

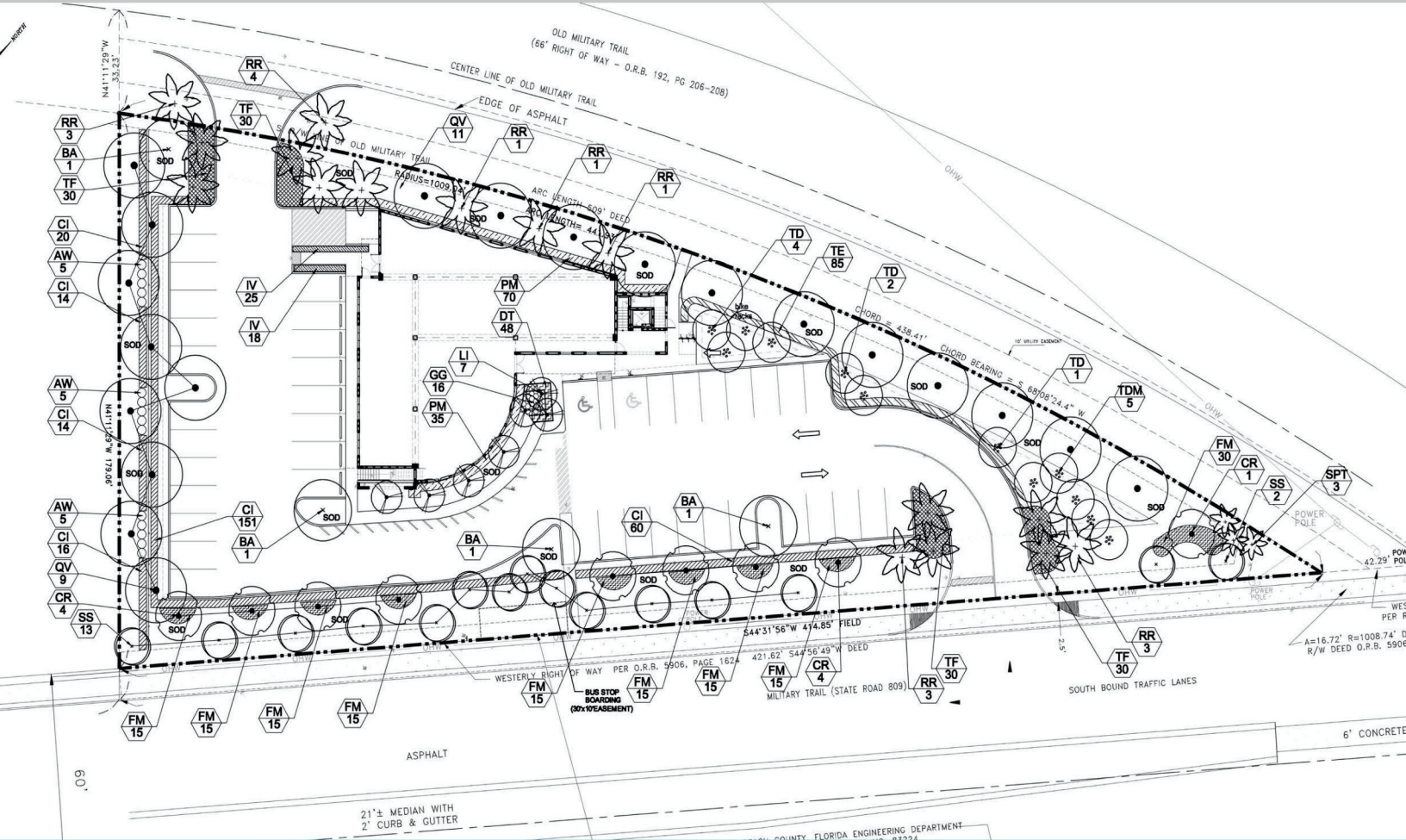
TREC
Total Real Estate
Consultants Inc.
954.341.3294

GEORGE PELAYO, RENE, MRP
BROKER ASSOCIATE

george@trecfl.com
954.482.1330



NOTICE: This information has been obtained from sources believed to be reliable but has not been verified. No warranty or representation, express or implied, is made as to the condition/legal adjustments of the property (or properties) referenced or as to the accuracy or completeness of the information contained, and same is submitted subject to errors, omissions, change of price, retail or other conditions, including but not limited to withdrawal without notice, and to any special listing conditions imposed by the property owner.



**8301 S Military Trail
Boynton Beach, FL 33436**

Lot Size: 43,226 +/- SQFT



JOE PELAYO, CCIM, SIOR
BROKER

trec@joepelayo.com
954.224.8773

TREC
Total Real Estate
Consultants Inc.
954.341.3294

GEORGE PELAYO, RENE, MRP
BROKER ASSOCIATE

george@trecfl.com
954.482.1330



NOTICE: This information has been obtained from sources believed to be reliable but has not been verified. No warranty or representation, express or implied, is made as to the condition/legal adjustments of the property (or properties) referenced or as to the accuracy or completeness of the information contained, and same is submitted subject to errors, omissions, change of price, retail or other conditions, including but not limited to withdrawal without notice, and to any special listing conditions imposed by the property owner.