

CENTRAL PARK PLACE MEDICAL CONDO

1,238 ±SQFT



9633 W BROWARD BLVD, UNIT #1, PLANTATION, FL 33324

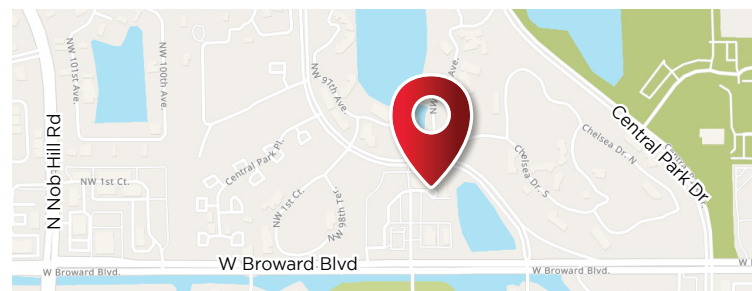


POPULATION

1 MILE	3 MILE	5 MILE
14,455	111,350	303,628

TRAFFIC COUNT (2022)

21,300+ daily vehicles



- Corner Unit and First Floor Medical / Professional Office
- Zoned in B-2PM / Central Business District
- Plenty of parking available
- Located in the heart of Broward County Florida

**PRICE
NEGOTIABLE**



JOE PELAYO, CCIM, SIOR, C2EX
BROKER
trec@joepelayo.com
954.224.8773

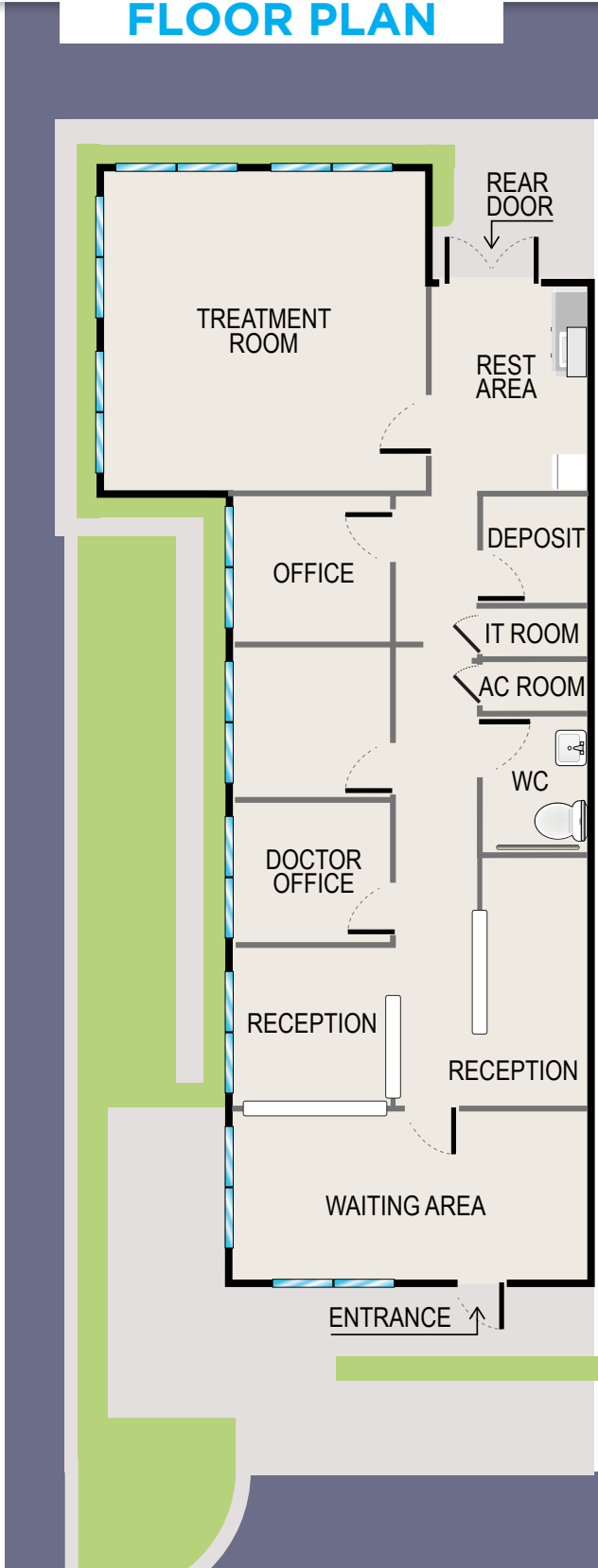
TREC
Total Real Estate
Consultants Inc.
www.trecfl.com
954.341.3294

GEORGE PELAYO, RENE, MRP
BROKER ASSOCIATE
george@trecfl.com
954.482.1330



NOTICE: This information has been obtained from sources believed to be reliable but has not been verified. No warranty or representation, express or implied, is made as to the condition/legal adjustments of the property (or properties) referenced or as to the accuracy or completeness of the information contained, and same is submitted subject to errors, omissions, change of price, retail or other conditions, including but not limited to withdrawal without notice, and to any special listing conditions imposed by the property owner.

FLOOR PLAN



JOE PELAYO, CCIM, SIOR, C2EX
BROKER
trec@joepelayo.com
954.224.8773

TREC
Total Real Estate
Consultants Inc.
www.trecfl.com
954.341.3294

GEORGE PELAYO, RENE, MRP
BROKER ASSOCIATE
george@trecfl.com
954.482.1330

