

OFFICE SPACE | CONDO

**FOR SALE**

**968 ±SQFT**



**540 NW UNIVERSITY BLVD, SUITE #105, PORT ST. LUCIE, FL 34986**



- Excellent Investment opportunity
- First floor class A office space
- Situated on lushly landscaped 6 acres campus
- Fronting University Drive, Just minutes from I-95
- High visibility and easy access north and south
- Walking distance from the Mets StadiumStadium.

**\$220,000**



**JOE PELAYO**/CCIM, SIOR, C2EX  
Broker / Founder & CEO  
trec@joepelayo.com  
**954.224.8773**

**TREC**  
Total Real Estate  
Consultants Inc.

**CAROLYN NIEMCZYK**/CFM  
Broker Associate St. Lucie County President  
carolynniemczyk@gmail.com  
**772.359.3242**



**CONSUELO CRUZ**  
Commercial /Residential Realtor®  
cruztrecl@gmail.com  
**786.246.2282**

English Español Deutsch



NOTICE: The information contained herein has been obtained from sources deemed reliable but has not been verified and no guarantee, warranty or representation, either express or implied, is made with respect to such information. Terms of sale or lease and availability are subject to change or withdrawal without notice. This information has been obtained from sources believed to be reliable but has not been verified.

South Florida Office 954.341.3294

trecfl.com

Treasure Coast Office 772.237.5969

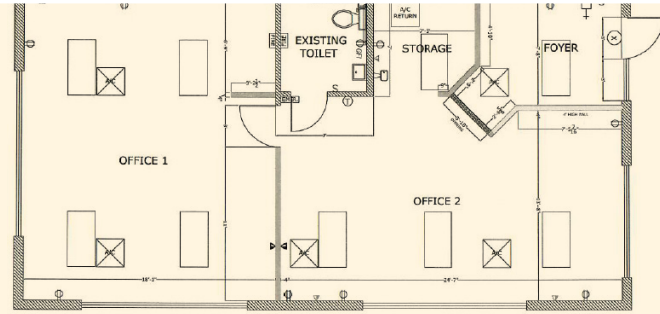
OFFICE SPACE | CONDO

**FOR SALE**



**540 NW UNIVERSITY BLVD, SUITE #105, PORT ST. LUCIE, FL 34986**

**FLOORPLAN**



**JOE PELAYO**/CCIM, SIOR, C2EX  
Broker / Founder & CEO  
trec@joepelayo.com  
**954.224.8773**

**TREC**  
Total Real Estate  
Consultants Inc.

**CAROLYN NIEMCZYK**/CFM  
Broker Associate St. Lucie County President  
carolynniemczyk@gmail.com  
**772.359.3242**



**CONSUELO CRUZ**  
Commercial /Residential Realtor®  
cruztrecl@gmail.com  
**786.246.2282**

English Español Deutsch



NOTICE: The information contained herein has been obtained from sources deemed reliable but has not been verified and no guarantee, warranty or representation, either express or implied, is made with respect to such information. Terms of sale or lease and availability are subject to change or withdrawal without notice. This information has been obtained from sources believed to be reliable but has not been verified.

South Florida Office 954.341.3294

trecfl.com

Treasure Coast Office 772.237.5969