

2331 N STATE ROAD 7 UNIT#118, LAUDERHILL, FL 33313

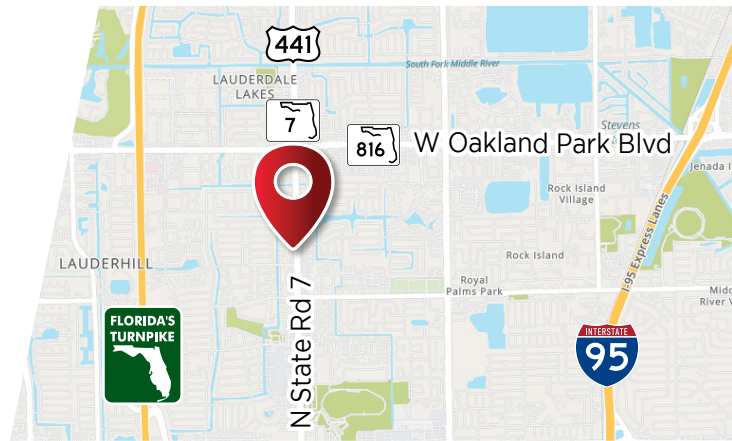


1,284 ±SQFT

SUNRISE PROFESSIONAL CENTER



- IMMEDIATE OCCUPANCY
- SELLER FINANCING QUALIFIED BUYER
- USED AS CHIROPRACTIC CENTER
- GREAT LOCATION ■ HIGH VISIBILITY
- RECEPTION AREA WITH PASS THROUGH WINDOW TO ADMIN OFFICE
- THREE PRIVATE OFFICES
- LOTS OF PARKING AVAILABLE



PRICE NEGOTIABLE



JOE PELAYO, CCIM, SIOR, C2EX  
BROKER  
trec@joepelayo.com  
954.224.8773

TREC  
Total Real Estate  
Consultants Inc.  
www.trecfl.com  
954.341.3294

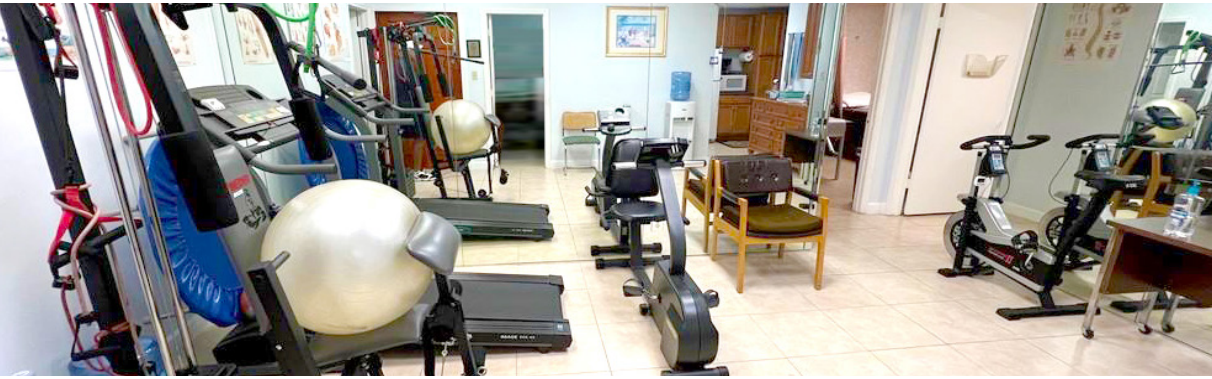
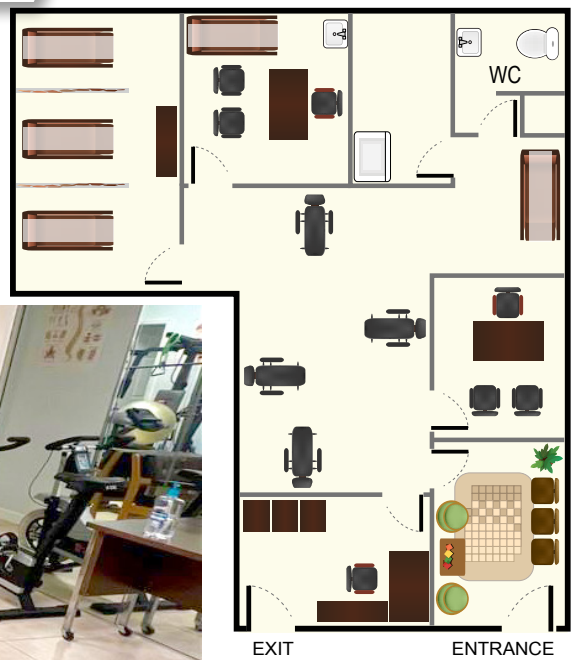
GEORGE PELAYO, RENE, MRP  
BROKER ASSOCIATE  
george@trecfl.com  
954.482.1330





2331 N STATE ROAD 7 UNIT#118, LAUDERHILL, FL 33313

FLOORPLAN



JOE PELAYO, CCIM, SIOR, C2EX  
BROKER  
trec@joepelayo.com  
954.224.8773

**TREC**  
Total Real Estate  
Consultants Inc.  
www.trecfl.com  
954.341.3294

GEORGE PELAYO, RENE, MRP  
BROKER ASSOCIATE  
george@trecfl.com  
954.482.1330

