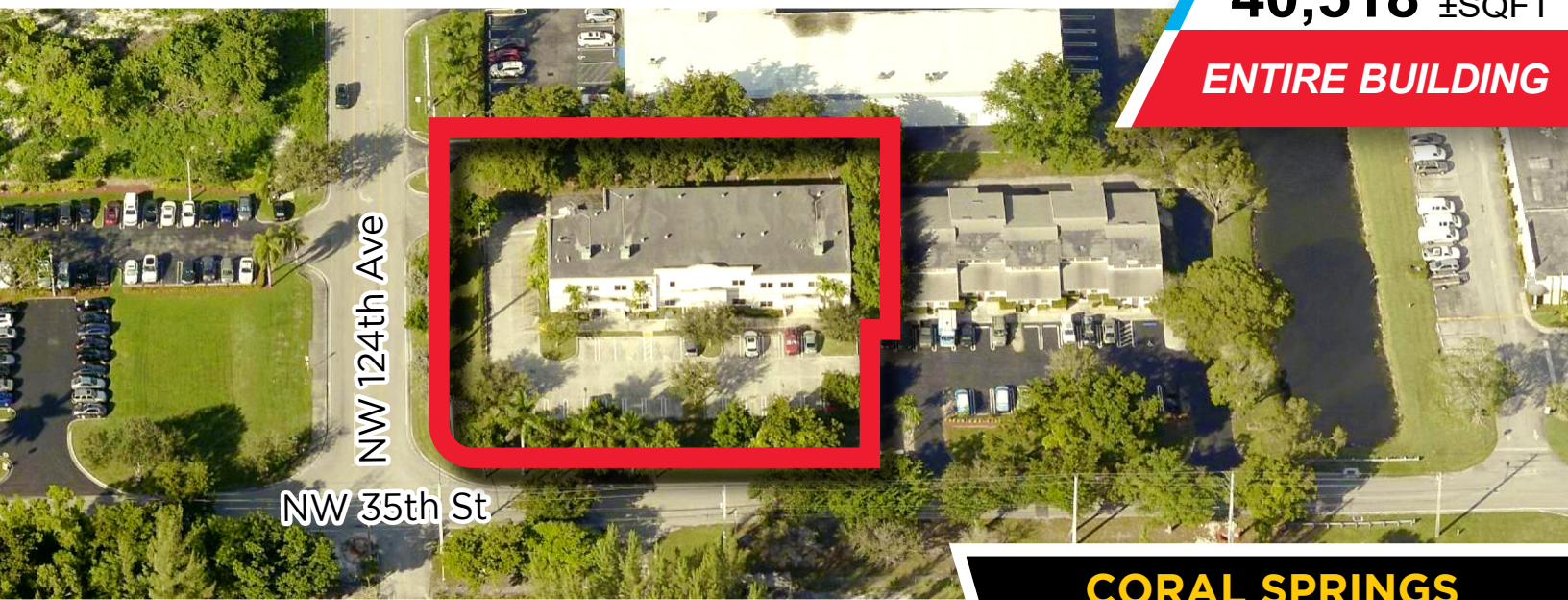


12341-12351 NW 35th St CORAL SPRINGS, FL 33065

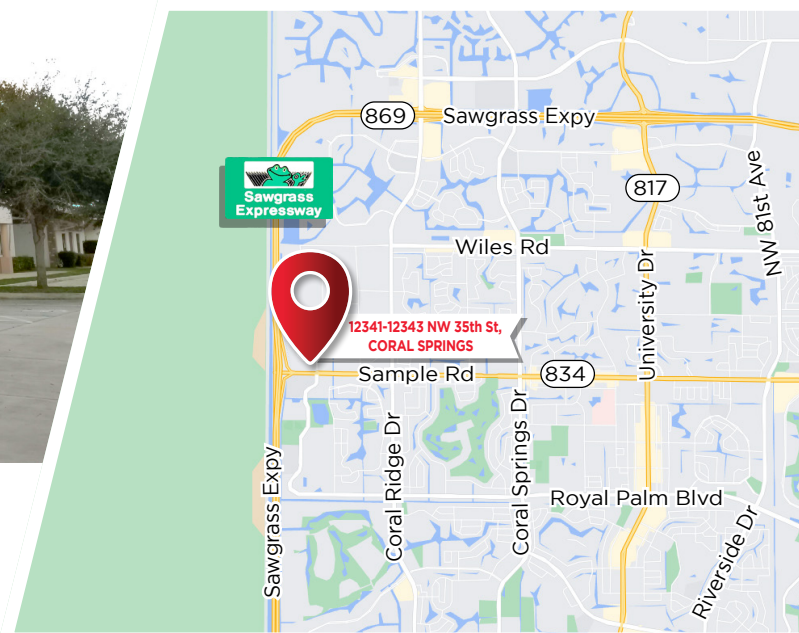
LAND SIZE

40,518 ±SQFT

ENTIRE BUILDING



CORAL SPRINGS CORPORATE PARK



- Zone IRD (Industrial Research & Development)
- Wonderful building built in 2008
- 5 bays Office Warehouse
- 21' Clear Ceiling Height
- Garage Roll Up Door
- Air Conditioning

10,810 ±SQFT

\$5,945,500



JOE PELAYO, CCIM, SIOR, C2EX
BROKER
trec@joepelayo.com
954.224.8773

TREC
Total Real Estate
Consultants Inc.
www.trecfl.com
954.341.3294

GEORGE PELAYO, RENE, MRP
BROKER ASSOCIATE
george@trecfl.com
954.482.1330

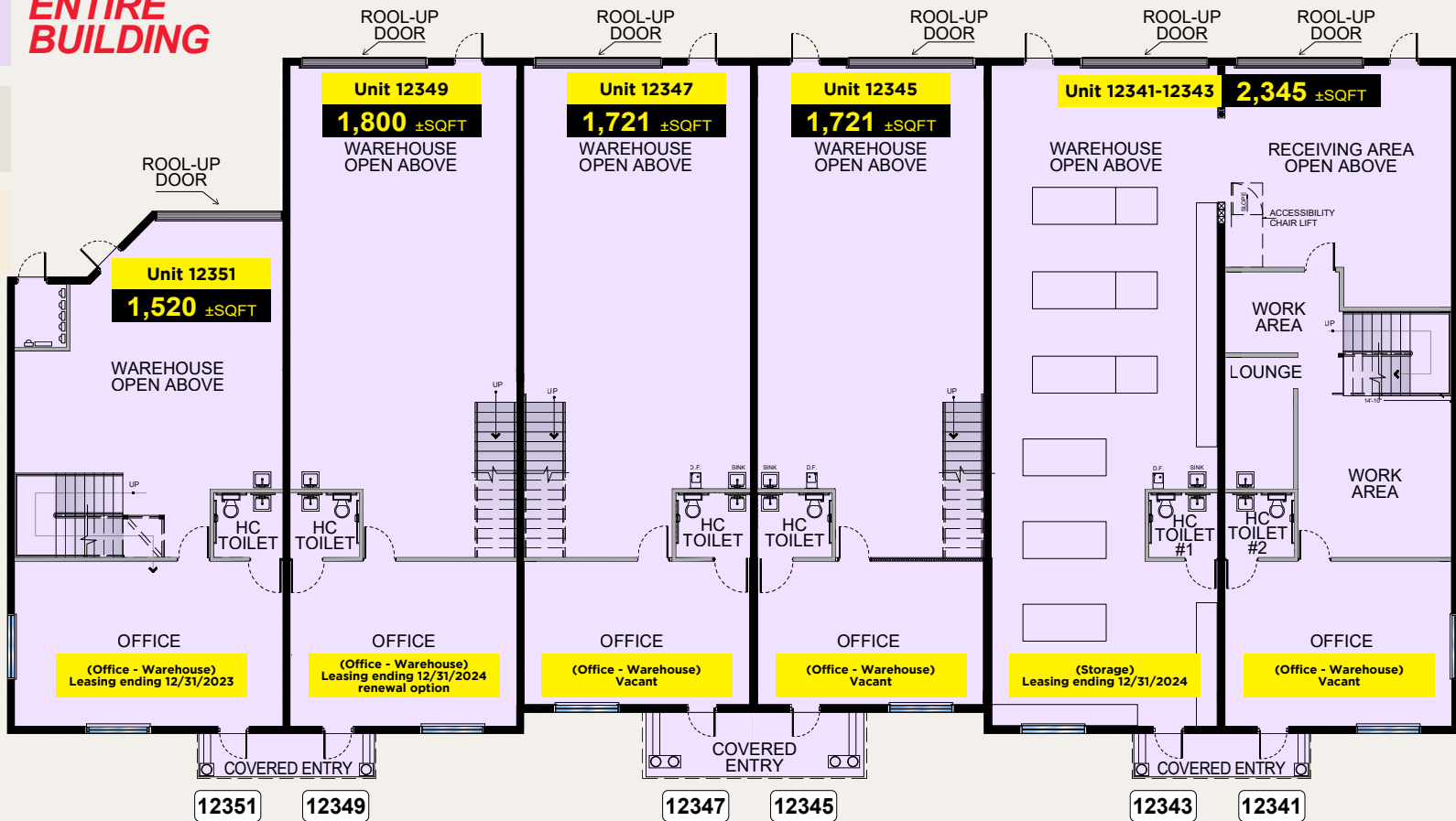




12341-12351 NW 35th St CORAL SPRINGS, FL 33065

FLOORPLAN

ENTIRE BUILDING



JOE PELAYO, CCIM, SIOR, C2EX
BROKER
trec@joepelayo.com
954.224.8773

TREC
Total Real Estate
Consultants Inc.
www.trecfl.com
954.341.3294

GEORGE PELAYO, RENE, MRP
BROKER ASSOCIATE
george@trecfl.com
954.482.1330

