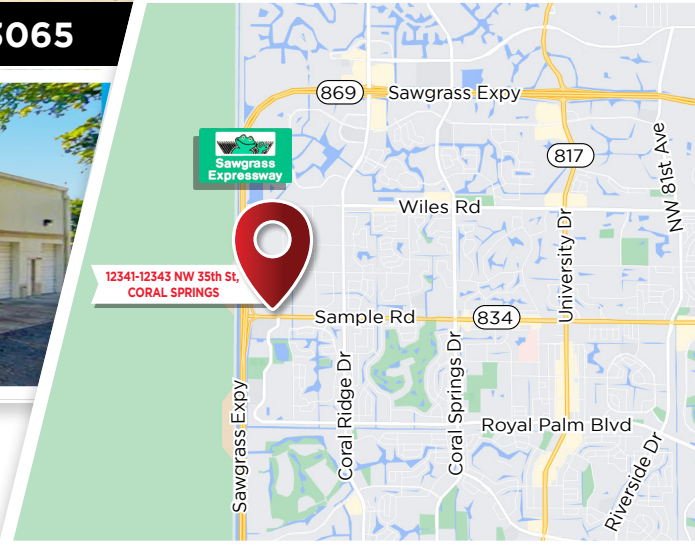




CORAL SPRINGS CORPORATE PARK

12341-12343 NW 35th St CORAL SPRINGS, FL 33065



- Zone IRD (Industrial Research & Development)
- Wonderful office/warehouse 2 Stories
- Kitchenette Break room
- 3 Bathrooms (1 w/shower)
- 2 Garage Roll Up Door
- ± 21' Clear Ceiling Height

3,879 ±SQFT

\$1,975,000



JOE PELAYO / CCIM, SIOR
trec@joepelayo.com
954.224.8773

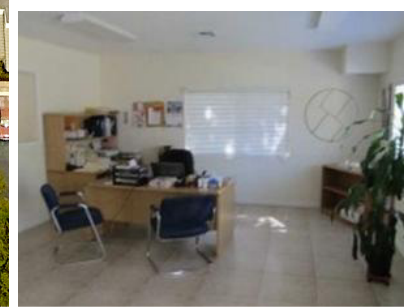


CONTACT US!

TREC
Total Real Estate Consultants Inc.
www.trecfl.com
954.341.3294

GEORGE PELAYO / RENE, MRP
georgetrec@joepelayo.com
954.482.1330





TREC Total Real Estate Consultants Inc.
www.trecfl.com

OFFICE WAREHOUSE

FOR SALE

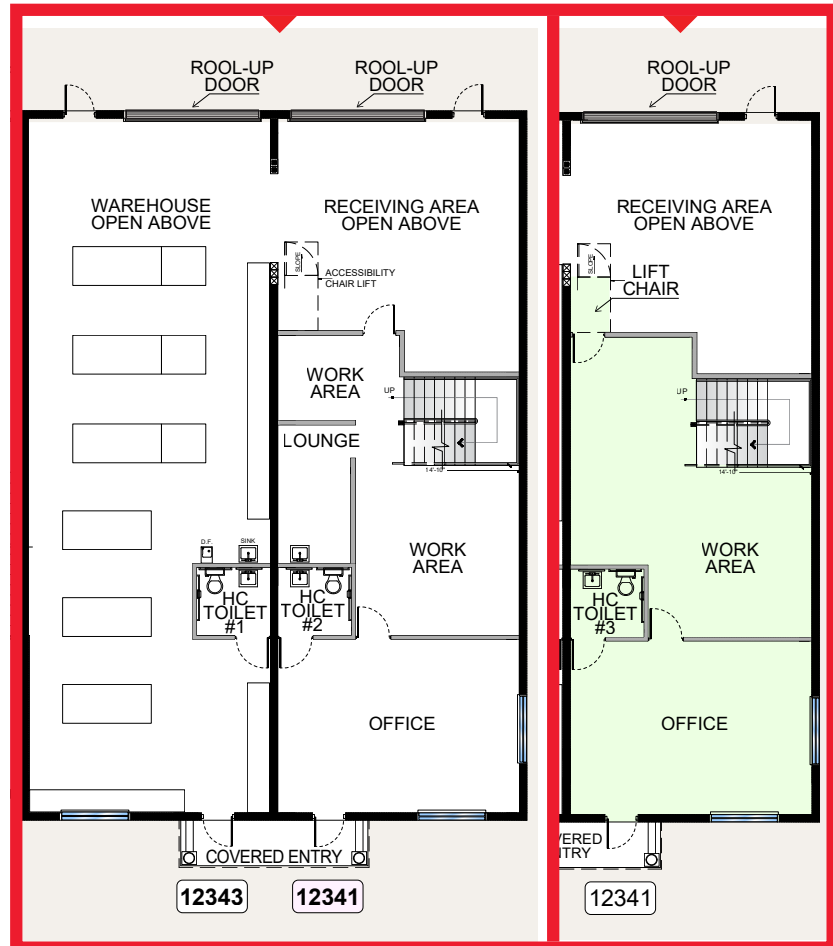
12341-12343 NW 35th St CORAL SPRINGS, FL 33065

FLOORPLAN



FIRST FLOOR

SECOND FLOOR MEZZANINE



JOE PELAYO / CCIM, SIOR
trec@joepelayo.com
954.224.8773



TREC
Total Real Estate Consultants Inc.
www.trecfl.com
954.341.3294

GEORGE PELAYO / RENE, MRP
georgetrec@joepelayo.com
954.482.1330



Note: This offering subject to errors, omissions, prior sales or withdrawal without notice.