

FOR **SALE**

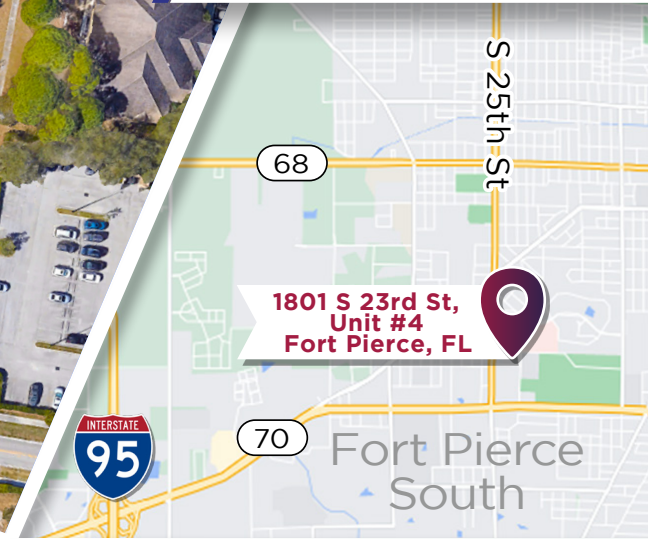
MEDICAL OFFICE

FOR **LEASE**



1801 S 23rd STREET, UNIT #4, FORT PIERCE, FL 34950

1,120 ±SQFT



SALE
\$123,200 \$110 per SF

- One block from Lawnwood Regional Medical Center
- One block north of Okeechobee road between I-95 exit 129 and US Highway 1
- Reception area with ADA Restroom
- Business Office, three additional offices
- Private office in rear with full bathroom
- Other tenants include Pediatrician and Children Therapist

LEASE
\$16/SF rent
+ \$3.50 CAM

\$1,820/Month
+ Sales Tax



JOE PELAYO/CCIM, SIOR
Founder & CEO
trec@joepelayo.com
954.224.8773

CONTACT US!

TREC Total Real Estate
Consultants Inc.

*Note: This offering subject to errors, omissions,
prior sales or withdrawal without notice.*

CAROLYN NIEMCZYK/CFM
Broker Associate St. Lucie County President
carolynniemczyk@gmail.com

772.359.3242



South Florida Office 954.341.3294

Treasure Coast Office 772.237.5969

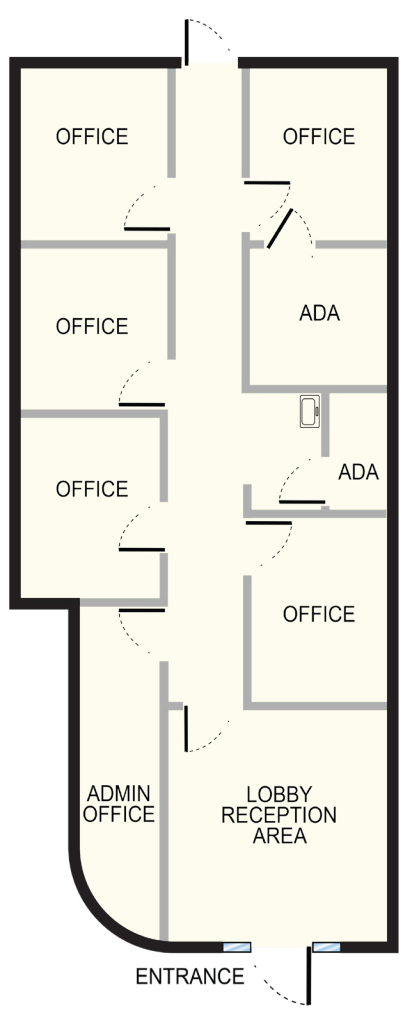
FOR **SALE**

MEDICAL OFFICE

FOR **LEASE**



FLOOR PLAN UNIT #4



JOE PELAYO /CCIM, SIOR
Founder & CEO
trec@joepelayo.com
954.224.8773

CONTACT US!

TREC Total Real Estate Consultants Inc.

Note: This offering subject to errors, omissions, prior sales or withdrawal without notice.

CAROLYN NIEMCZYK /CFM
Broker Associate St. Lucie County President
carolynniemczyk@gmail.com



772.359.3242

South Florida Office 954.341.3294

Treasure Coast Office 772.237.5969