

OFFICE | WAREHOUSE CONDO

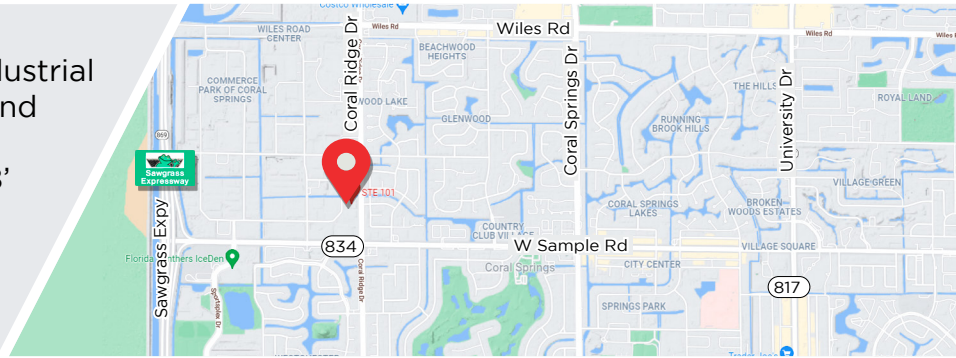
FOR SALE

3650 Coral Ridge Dr, Unit #101, CORAL SPRINGS, FL 33065

4,129 ±SQFT



- 2 Story Beautifully Maintained Office/Industrial Condo • Zone IRD: Industrial, Research and Development
- Fully Air-Conditioned Warehouse with 18' ceiling and a 10' x 10' roll-up door grade level
- Exposure to Coral Ridge Drive
- Access expressways, Sawgrass & Turnpike
- The unit has hurricane shutters (windows and doors)
- Tax (2020): \$8,999
- HOA/CA: \$510



\$879,999



JOE PELAYO / CCIM, SIOR
 trec@joepelayo.com
 954.224.8773

CALL US!
TREC
 Total Real Estate
 Consultants Inc.
 www.trecfl.com
 954.341.3294

GEORGE PELAYO / RENE, MRP
 georgetrec@joepelayo.com
 954.482.1330

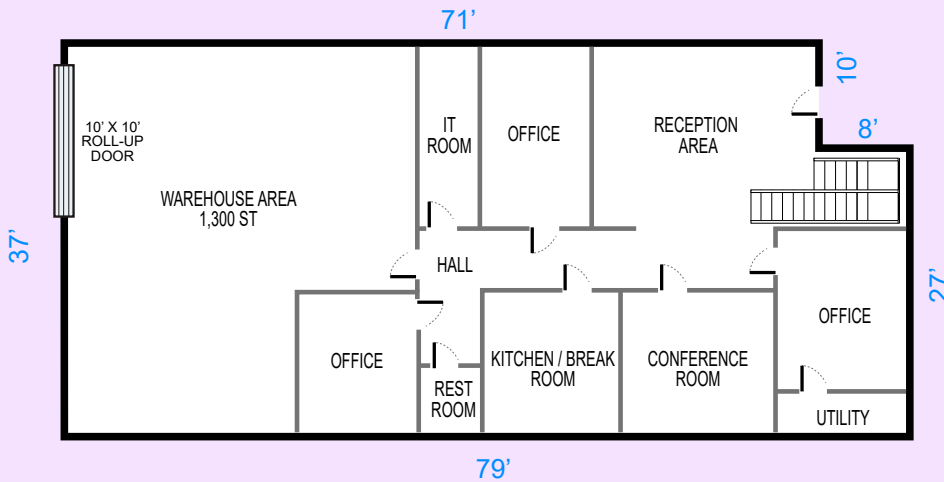




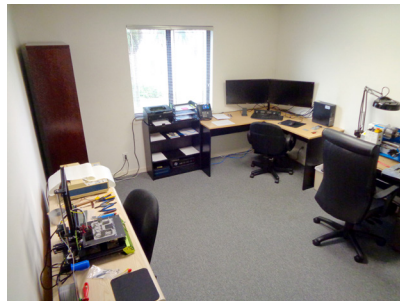
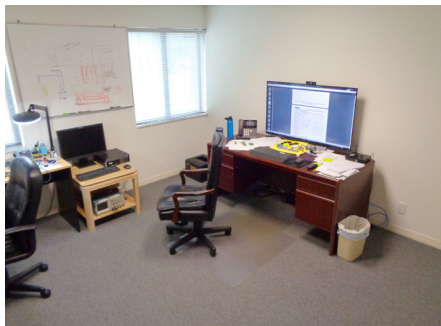
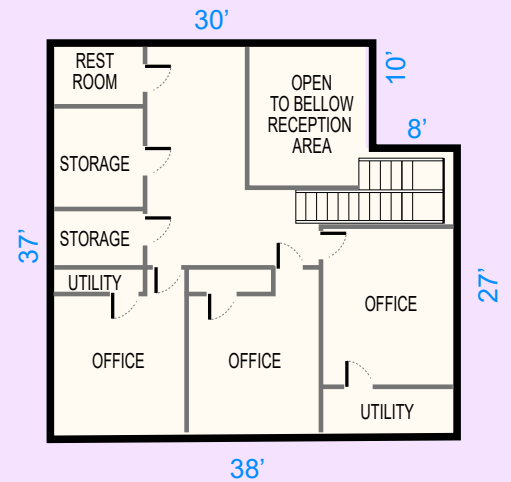
3650 Coral Ridge Dr, Unit #101, CORAL SPRINGS, FL 33065

FLOOR PLAN SUITE #101

FIRST FLOOR



SECOND FLOOR



JOE PELAYO / CCIM, SIOR
trec@joepelayo.com
954.224.8773

CALL US!
TREC
Total Real Estate
Consultants Inc.
www.trecfl.com
954.341.3294

GEORGE PELAYO / RENE, MRP
georgetrec@joepelayo.com
954.482.1330

