

316 Eisenhower Parkway

LIVINGSTON, NJ

For Sale

Medical Condo for Sale



Available Space

MEDICAL OFFICE:

- Approximately 4,200 SF of Office
- 8 Exam Rooms
- 3+ Consultation Rooms
- Administrative Offices
- 3 Bathrooms
- Work Station for Health Extenders
- Lab with Waiting Room
- Breakroom
- Waiting + Reception Area
- Private Entrance
- 4 Designated Parking Spots

Property/Building Features

- Approximately 14,000 SF Building
- Monument Signage on Eisenhower Pkwy
- Excellent On-Site Parking
- Direct Access from Parking Lot
- Easy access to Route 280/ 24/78
- Convenient to Local Hospitals

PRICE UPON REQUEST

Contact Our Exclusive Agents

Judith Feldman

jfeldman@newmarkrealestate.com

Mobile: 973.713.7918

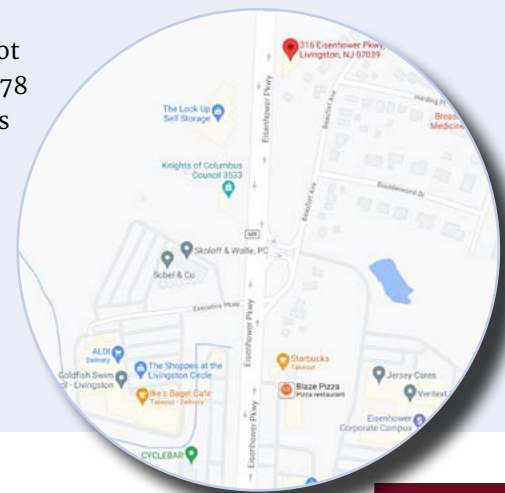
Office: 973.884.4444 ext. 28

Ebony Parham

eparham@newmarkrealestate.com

Mobile: 732.236.6261

Office: 973.884.4444



YEARS STRONG

2021 Newmark Associates, CRE, LLC. Information obtained from sources deemed to be reliable. However, no guarantee, warrant or representation is made as to accuracy of the information presented which is submitted subject to errors, omission, change of price, rental or other conditions, prior sale lease, financing or withdrawal without notice. Projections, opinions, assumptions or estimates are provided for example only, and may not represent current or future performance. Interested parties should consult their tax and legal advisors and conduct a thorough investigation of the property and any prospective transaction.

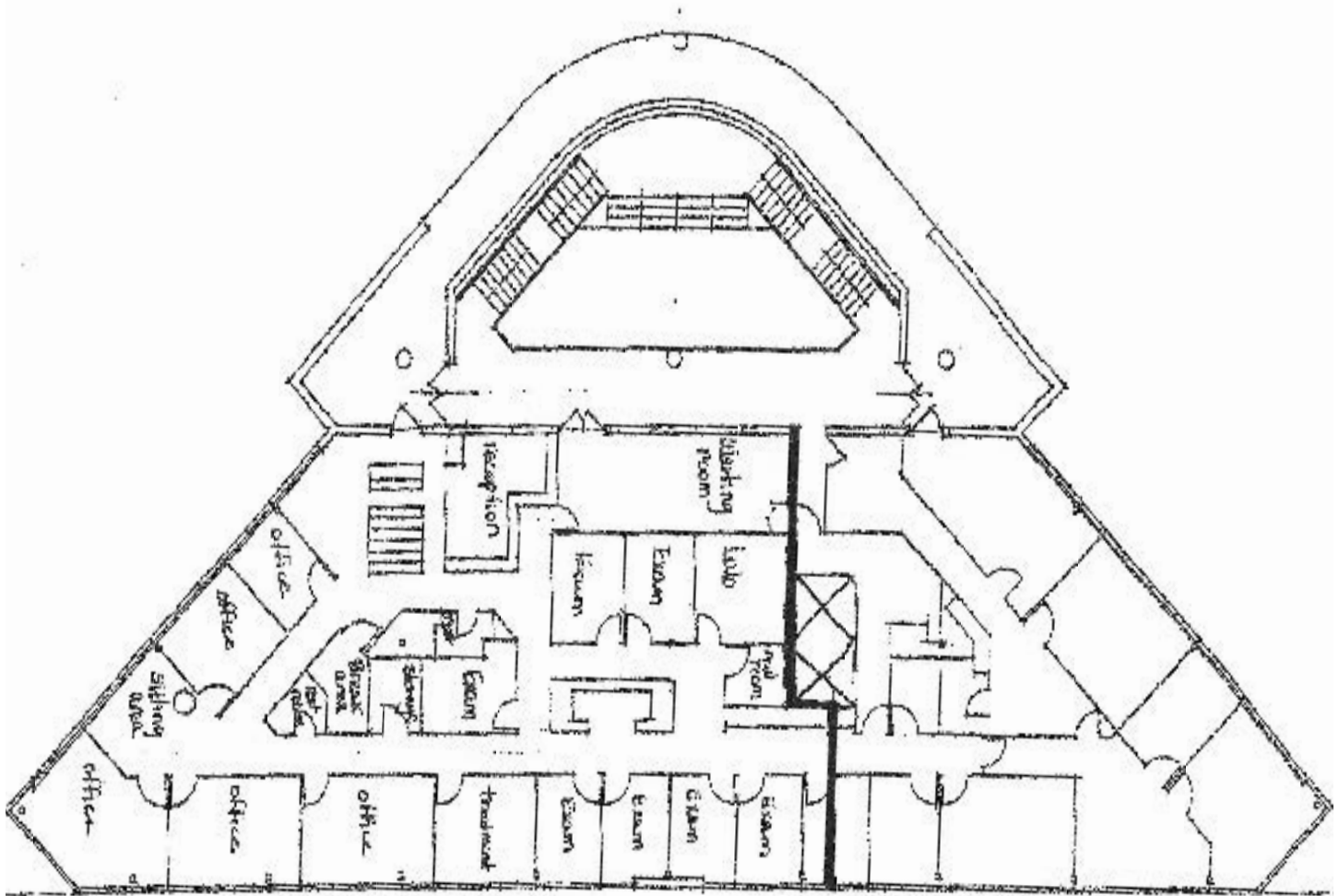
316 Eisenhower Parkway

LIVINGSTON, NJ

For Sale

Floor Plan

Suite 202- Medical Condo
Approximately 4,200 SF



316 Eisenhower Parkway, Livingston, NJ

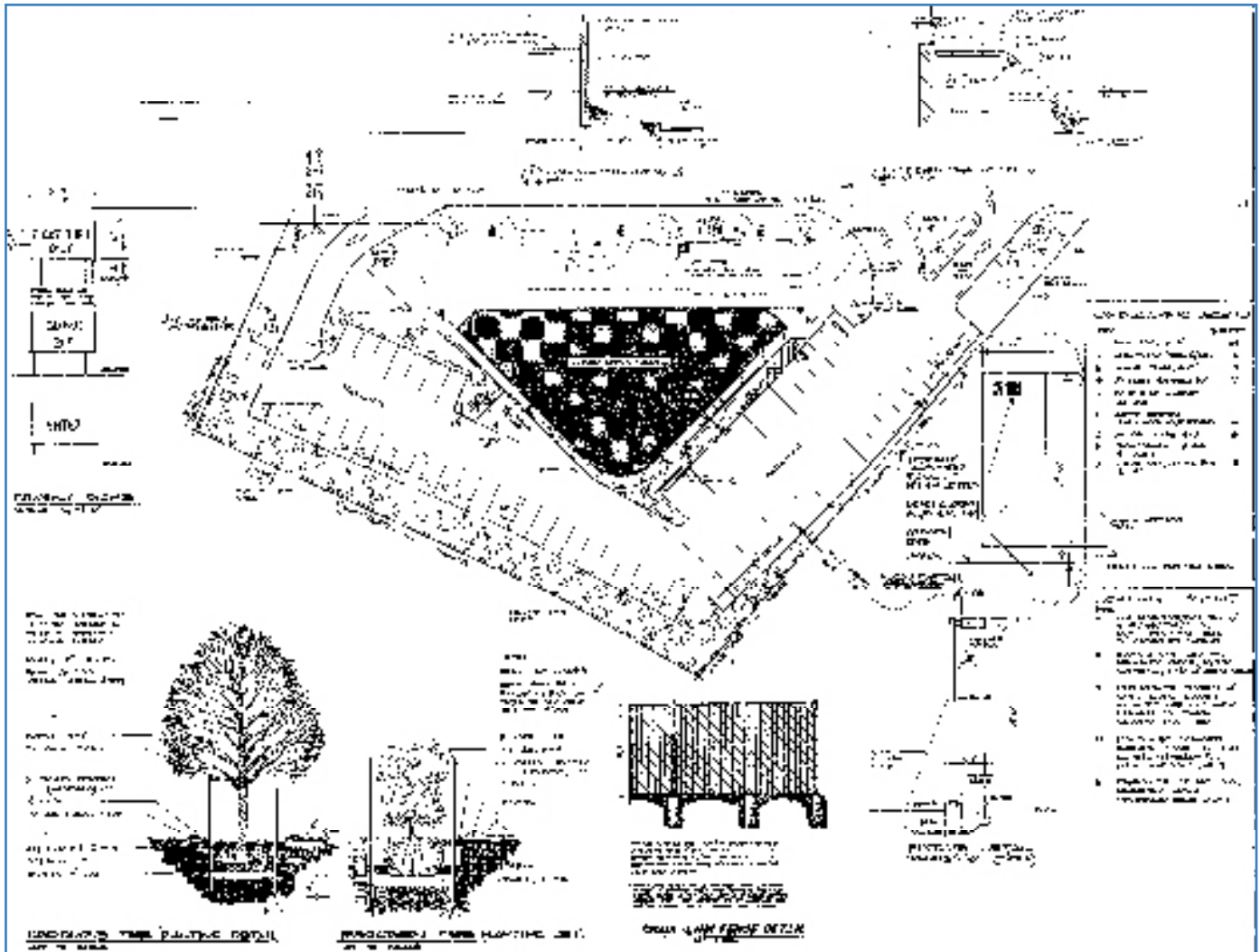
2021 Newmark Associates, CRE, LLC. Information obtained from sources deemed to be reliable. However, no guarantee, warrant or representation is made as to accuracy of the information presented which is submitted subject to errors, omission, change of price, rental or other conditions, prior sale lease, financing or withdrawal without notice. Projections, opinions, assumptions or estimates are provided for example only, and may not represent current or future performance. Interested parties should consult their tax and legal advisors and conduct a thorough investigation of the property and any prospective transaction.

316 Eisenhower Parkway

LIVINGSTON, NJ

For Sale

Site Plan



2021 Newmark Associates, CRE, LLC. Information obtained from sources deemed to be reliable. However, no guarantee, warrant or representation is made as to accuracy of the information presented which is submitted subject to errors, omission, change of price, rental or other conditions, prior sale lease, financing or withdrawal without notice. Projections, opinions, assumptions or estimates are provided for example only, and may not represent current or future performance. Interested parties should consult their tax and legal advisors and conduct a thorough investigation of the property and any prospective transaction.