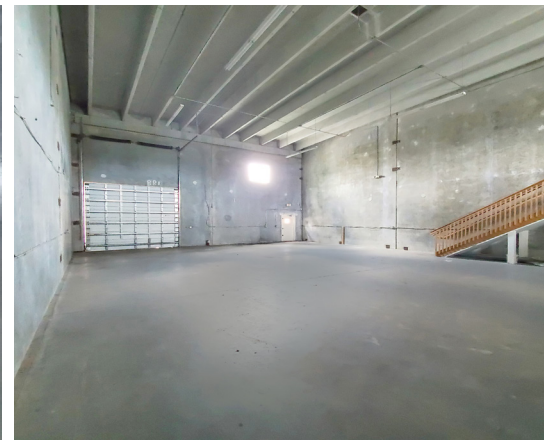


POMPANO INDUSTRIAL PARK CONDO



1071 NW 31ST AVE, B-3, POMPANO BEACH, FL, 33069

FOR **SALE** OFFICE WAREHOUSE



POMPANO INDUSTRIAL PARK CONDO

- Fenced Business Complex
- Zoned I-1 (Light Industrial)
- Lots of Natural Lighting
- Concrete Tilt Up Walls
- Twin "T" Roof
- 21 ft. Clear Ceilings
- 1 Roll Up Door per Unit (12'W x 12'H)
- Direct access to the Florida's Turnpike

UNIT	Annual TAX	Association FEE
B-3	\$6,549	\$720 Monthly

B-3 | 3,325 ±SQFT

\$595,175

Lease Ending 04/30/2022



JOE PELAYO / CCIM, SIOR
trec@joepelayo.com
954.224.8773

CALL US!

TREC
Total Real Estate
Consultants Inc.
www.trecfl.com
954.341.3294

GEORGE PELAYO / RENE, MRP
georgetrec@joepelayo.com
954.482.1330



Note: This offering subject to errors, omissions, prior sales or withdrawal without notice.

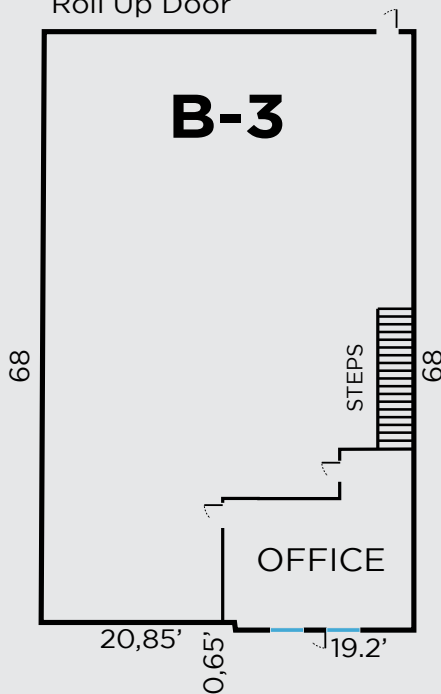


NW 31st Ave

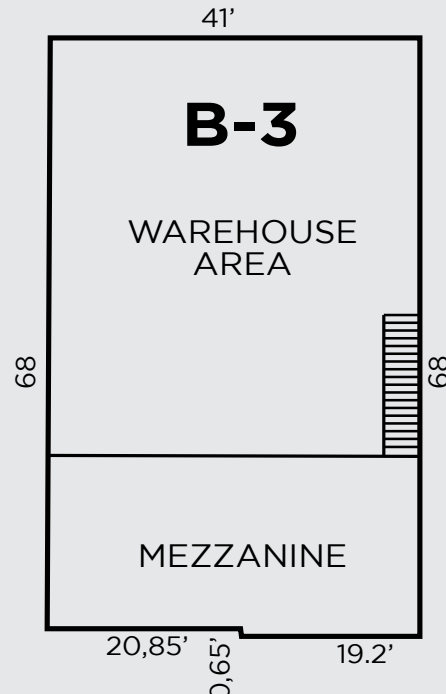
1071 NW 31st Ave, B-3, Pompano Beach, FL, 33069

FIRST FLOOR

Roll Up Door



SECOND FLOOR



JOE PELAYO / CCIM, SIOR
 trec@joepelayo.com
 954.224.8773

CALL US!

TREC
 Total Real Estate
 Consultants Inc.
 www.trecfl.com
 954.341.3294

GEORGE PELAYO / RENE, MRP
 georgetrec@joepelayo.com
 954.482.1330



Note: This offering subject to errors, omissions, prior sales or withdrawal without notice.