

FOR SALE

Auto Tire & Service Center



Owner/User Opportunity
\$1,250,000.00

Built: in 1970

Building Area: 6,115 SF

Land Area : 27,502 SF

Concrete, stucco, Steel & wood construction

Zoning: B-3 commercial Industrial

SHOWING BY APPOINTMENT ONLY

Building and Business : \$1,250,000.00

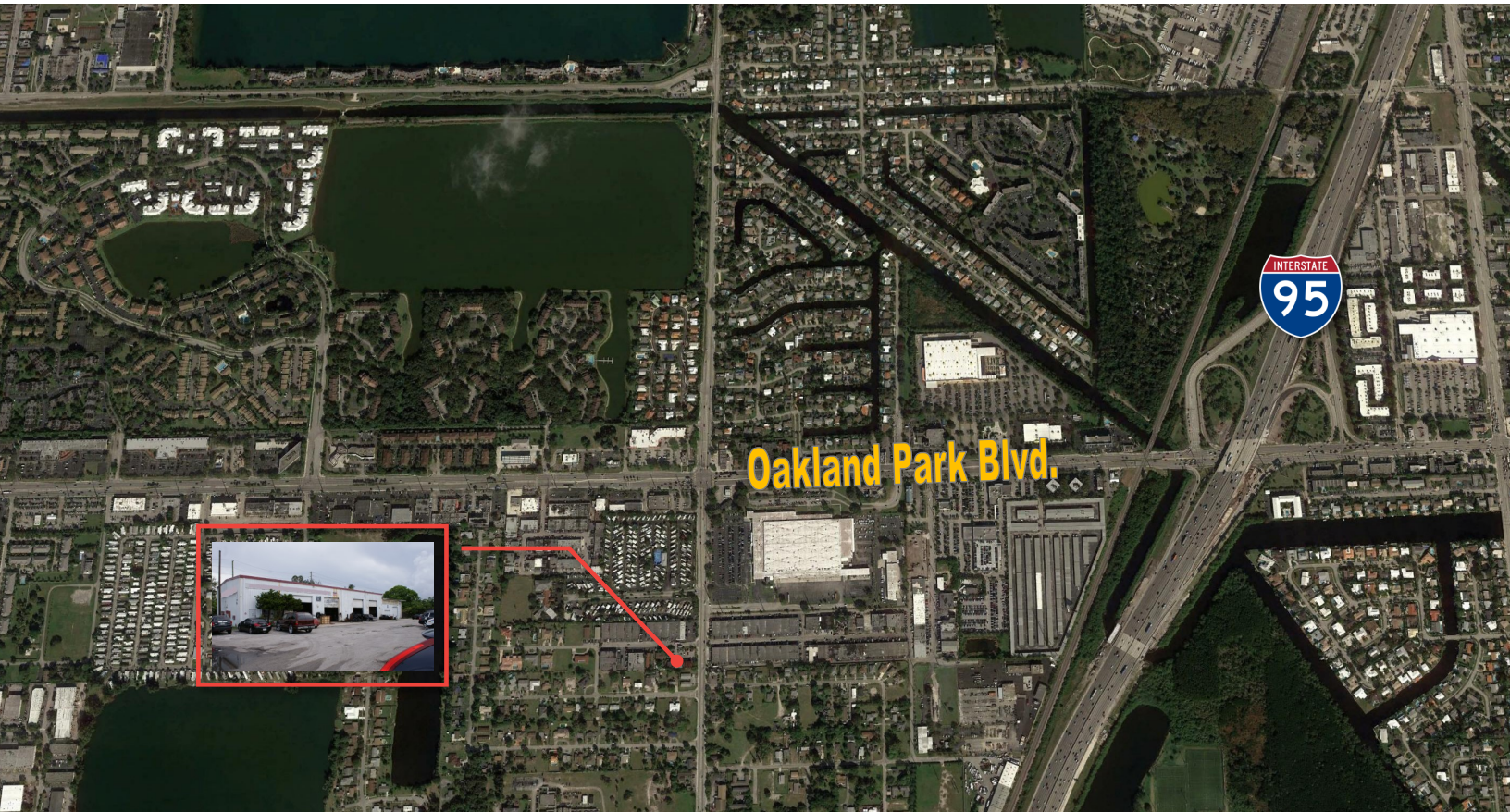
The Fitzgerald Group | Fort Lauderdale
1800 Eller Drive | Suite 212
Fort Lauderdale, FL 33316
www.fitzgeraldgroup.com

Adam P. Von Romer
O: 954.760.9300 | M: 954.495.1818
adam@fitzgeraldgroup.com

Michael Martin
O: 561.620.2800 | M: 954.817.7038
mike@fitzgeraldgroup.com

FOR SALE

Auto Tire & Service Center



CENTRALLY LOCATED | CONVENIENT HIGHWAY ACCESS

The property was originally constructed in 1970 and three bays have been added since its initial construction.

Property Highlights:

- The property is currently being used as an automotive repair shop and is zoned B-3 commercial industrial use: air-conditioning sales, service and repairs, automotive sales, boat and marine sales, dry leaner and much more are permitted
- Approved uses 48: Industrial, distribution, trucking, storage, etc.
- NW 21st Ave. is a North South thoroughfare with an average daily traffic count of over 15,000 cars per day
- 2 entrances & abundant parking (30± spaces)

Adam P. Von Romer
O: 954.760.9300 | M: 954.495.1818
adam@fitzgeraldgroup.com

Michael Martin
O: 561.620.2800 | M: 954.817.7038
mike@fitzgeraldgroup.com

The Fitzgerald Group | Fort Lauderdale
1800 Eller Drive | Suite 212
Fort Lauderdale, FL 33316
Www.fitzgeraldgroup.com



THE FITZGERALD GROUP
COMMERCIAL REAL ESTATE

Any information herewith is obtained from sources we consider reliable. However, we are not responsible for misstatement of facts, errors, omissions, prior sale, and withdrawal from market modification of mortgage commitment, terms and conditions or change in price without prior notice. The information supplied herein is for informational purposes only and shall not constitute a warranty of assurance that said information is correct. Any person intending to rely upon the information supplied herein should verify said information independently.