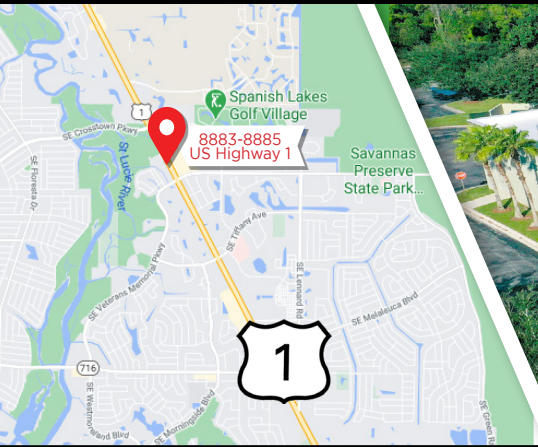


FREE STANDING

BUILDING

FOR SALE

8883 S US Highway 1, Port Saint Lucie, FL 34952



ST LUCIE TECHNOLOGY CAMPUS

59,553_± SF

- Zoning CS (Service Commercial)

BUILDING

- 59,553 SQFT warehouse and production facility available
- Flexible amount of office space
- Class A, state-of-the-art building
- Multiple Docks and drive in loading capabilities
- Reception Area • Elevator Acces
- Conference Rooms • Private Restrooms
- Construction Reinforced Concrete
- 59,553 SQFT 100% A/C
- 24' - 30' clear heights
- Power Supply Amps: 1,200
- 600 KW Generator
- 6 lanes of traffic and a direct turn-in lane from both directions
- Easy access on Crosstown Parkway to Florida Turnpike and I-95
- Beautiful park like setting on 24 acres



100% AC / 24'- 30' CLEARANCE HEIGHTS CEILING

360 virtual tour <https://bit.ly/3IsL7nJ>

video tour <https://bit.ly/2JiyoXM>

\$7,500,000



JOE PELAYO /CCIM, SIOR
 Founder & CEO
trec@joepelayo.com
 954.224.8773

CONTACT US!

TREC

Total Real Estate Consultants Inc.

Note: This offering subject to errors, omissions, prior sales or withdrawal without notice.



CAROLYN NIEMCZYK /CFM
 Broker Associate St. Lucie County President
carolynniemczyk@gmail.com
 772.359.3242

South Florida Office 954.341.3294

Treasure Coast Office 772.237.5969

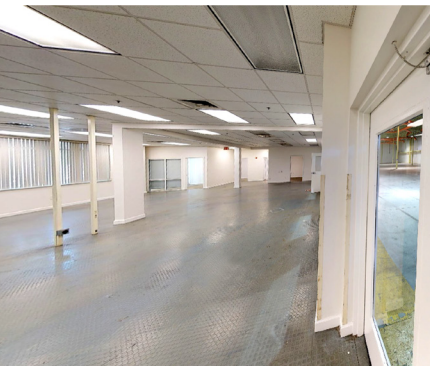
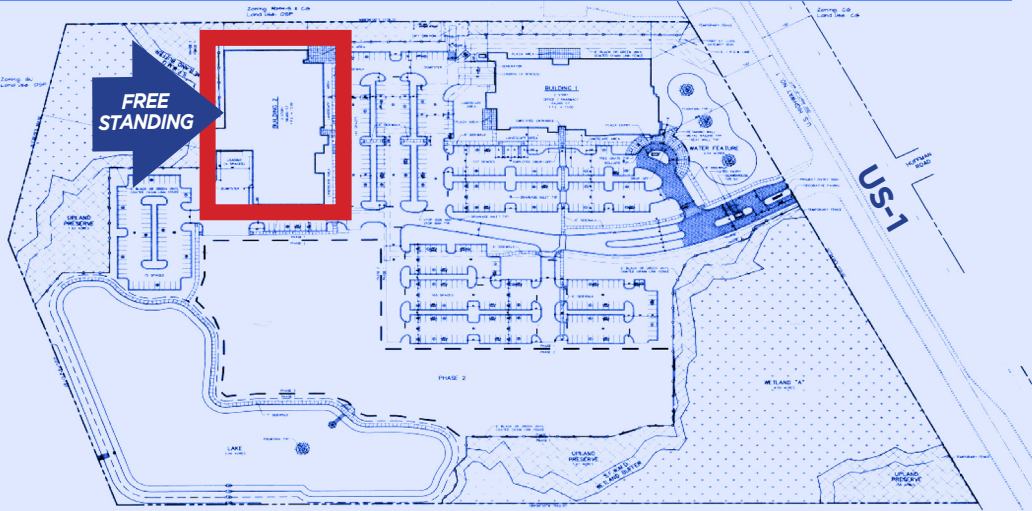
FREE STANDING

BUILDING

FOR SALE

8883 S US Highway 1, Port Saint Lucie, FL 34952

Site Plan



JOE PELAYO / *CCIM, SIOR*
 Founder & CEO
trec@joepelayo.com
 954.224.8773

CONTACT US!

TREC Total Real Estate Consultants Inc.

Note: This offering subject to errors, omissions, prior sales or withdrawal without notice.



CAROLYN NIEMCZYK / *CFM*
 Broker Associate St. Lucie County President
carolynniemczyk@gmail.com
 772.359.3242

South Florida Office 954.341.3294

Treasure Coast Office 772.237.5969