



# Commercial

R E A L T Y

A Rooster Ag' Realty, Inc. Company

## THE ROUTE 30 LOT



- 3.75 acres

- SWC Route 30 & Dauberman Road @ the future Dauberman extension.
- Zoned Mixed Commercial Use (MCU)

**KANE COUNTY, BIG ROCK TWP.**

**Listed At: \$250,000**

Phone: (815) 333-4354

Email: [steve@roosterag.com](mailto:steve@roosterag.com)

Web: [www.roosterag.com](http://www.roosterag.com)

1100 S County Line Road

P.O. Box 297

Maple Park, IL 60151

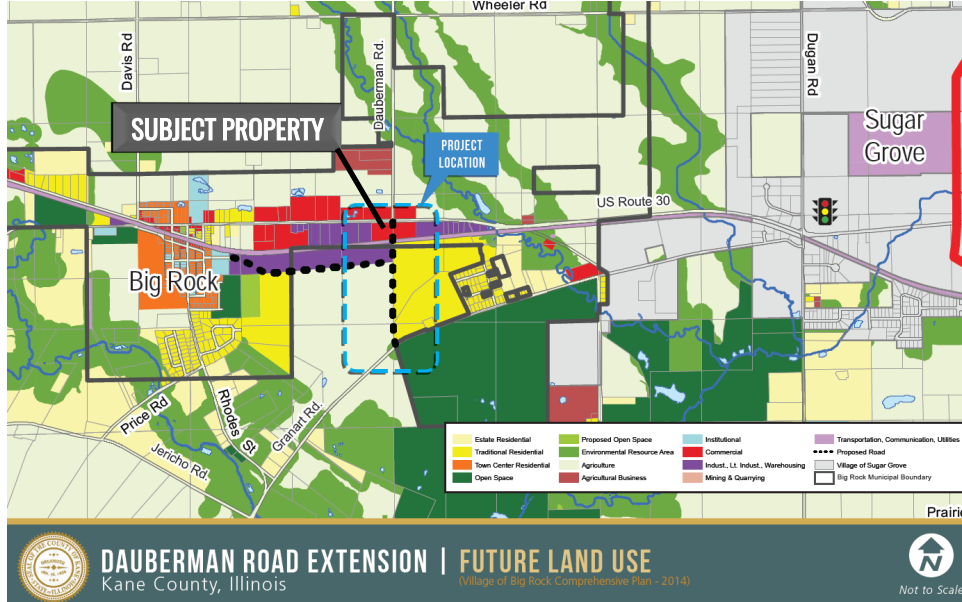
Steve Edwards 630-774-7470



# Commercial

R E A L T Y

A Rooster Ag' Realty, Inc. Company



## PROPERTY SPECIFICATIONS

ACRES:	3.75
ESTIMATED TAXES:	\$736.62
ZONING:	MCU—Mixed Commercial Use
PRICE:	\$250,000

### DEVELOPMENT OPPORTUNITY!

Excellent location at the SWC of Route 30 & the Dauberman Road Extension.

**RA COMMERCIAL REALTY**  
 1100 S. County Line Rd  
 PO Box 297  
 Maple Park, IL 60151



**Steve Edwards**  
 Broker  
 Email: [steve@roosterag.com](mailto:steve@roosterag.com)  
 Phone: 630.774.7470

Real Estate

Farm Management

Crop Insurance

Appraisals





# Commercial

R E A L T Y

A Rooster Ag' Realty, Inc. Company





# Commercial

## R E A L T Y

A Rooster Ag' Realty, Inc. Company



©2020 AqriData, Inc.

**RA COMMERCIAL REALTY**  
1100 S. County Line Rd  
PO Box 297  
Maple Park, IL 60151



**Steve Edwards**  
Broker  
Email: [steve@roosterag.com](mailto:steve@roosterag.com)  
Phone: 630.774.7470

Real Estate

Farm Management

Crop Insurance

Appraisals

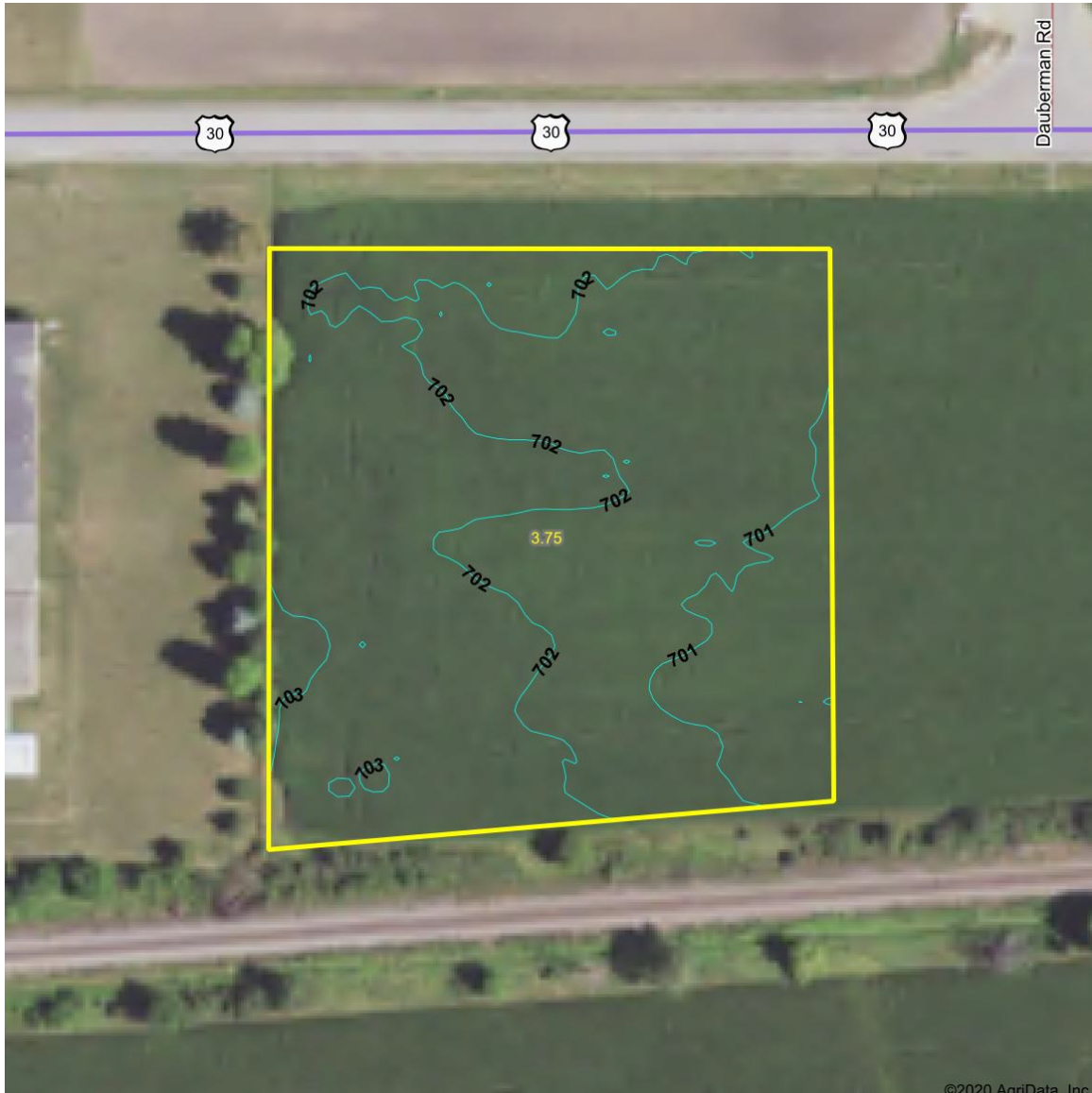




# Commercial

R E A L T Y

A Rooster Ag' Realty, Inc. Company



## RA COMMERCIAL REALTY

1100 S. County Line Rd  
PO Box 297  
Maple Park, IL 60151



## Steve Edwards

Broker

Email: [steve@roosterag.com](mailto:steve@roosterag.com)

Phone: 630.774.7470

Real Estate

Farm Management

Crop Insurance

Appraisals