

FOR SALE | Established Business & Industrial Property



Owner/User Opportunity \$725,000.00

Built in 1963

Building Area 3,488 SF

Land Area 7,260 SF

Solid Concrete Block and Stucco Construction

14 –16 Foot ceiling height

Zoning I (light Industrial) USE 48(auto-services)

Building and Business : \$725,000.00



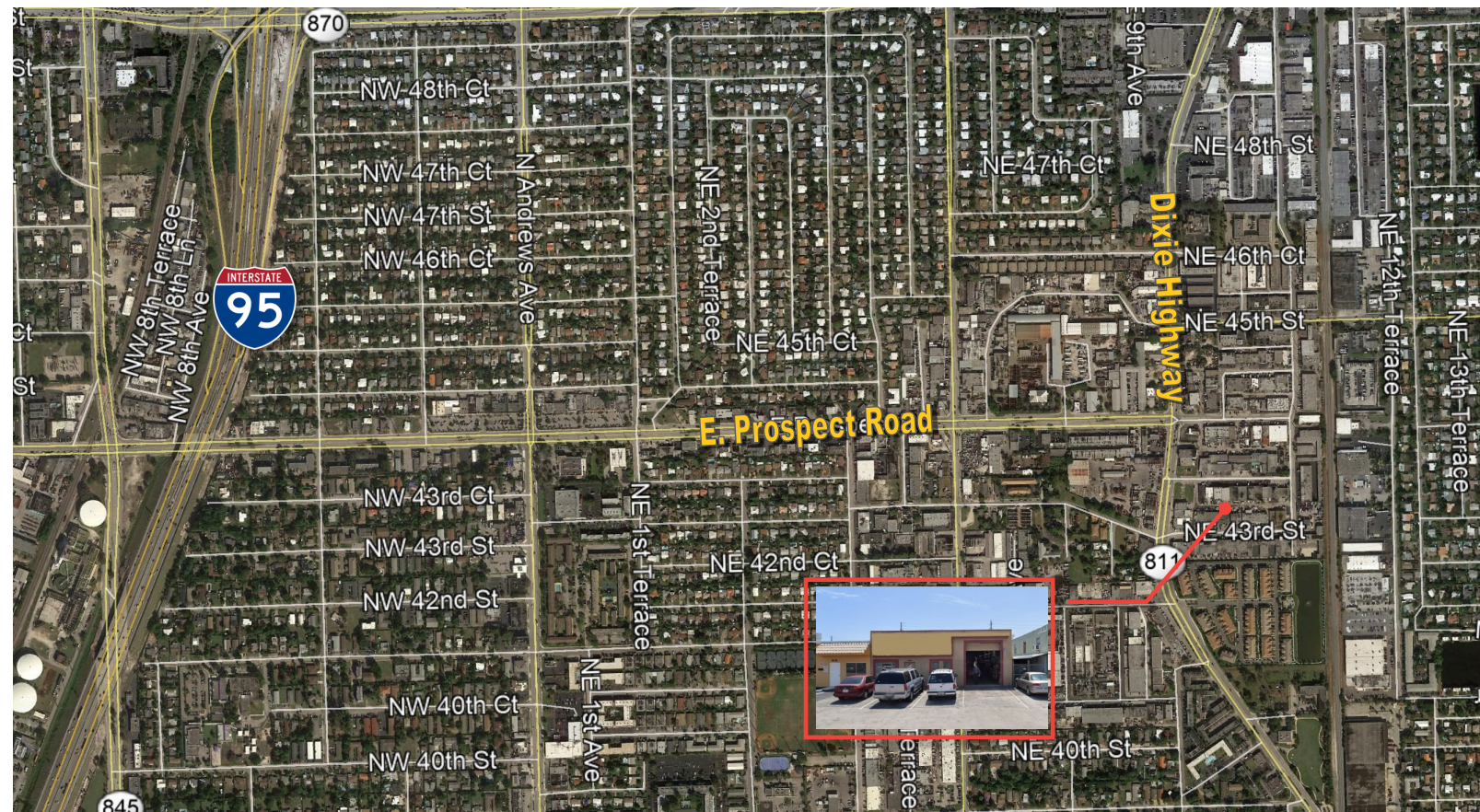
The Fitzgerald Group | Fort Lauderdale
1800 Eller Drive | Suite 212
Fort Lauderdale, FL 33316
www.fitzgeraldgroup.com

Adam P. Von Romer
O: 954.760.9300 | M: 954.495.1818
adam@fitzgeraldgroup.com

Michael Martin
O: 561.620.2800 | M: 954.817.7038
mike@fitzgeraldgroup.com

FOR SALE

Established Business & Industrial Property



CENTRALLY LOCATED | CONVENIENT HIGHWAY ACCESS

The subject property is a 3,488 square foot building situated on a 7,260 square foot lot and has 50 feet of frontage on NE 44th Street. The business has been operating since 1975 and continues operations presently.

- Well established automotive repair shop
- 4 parking spaces in the front of building with covered rear parking and storage area
- Ceiling heights from; 8' in the small office area to between 10' and 14' in the garage and covered area
- One 12' high grade level roll-up door in the front of the building
- Two grade level bay doors in the rear of the building
- Close to Dixie Highway, Oakland Park Boulevard, and has quick easy access to I-95.

Adam P. Von Romer
O: 954.760.9300 | M: 954.495.1818
adam@fitzgeraldgroup.com

Michael Martin
O: 561.620.2800 | M: 954.817.7038
mike@fitzgeraldgroup.com

The Fitzgerald Group | Fort Lauderdale
1800 Eller Drive | Suite 212
Fort Lauderdale, FL 33316
Www.fitzgeraldgroup.com



THE FITZGERALD GROUP
COMMERCIAL REAL ESTATE

Any information herewith is obtained from sources we consider reliable. However, we are not responsible for misstatement of facts, errors, omissions, prior sale, and withdrawal from market modification of mortgage commitment, terms and conditions or change in price without prior notice. The information supplied herein is for informational purposes only and shall not constitute a warranty of assurance that said information is correct. Any person intending to rely upon the information supplied herein should verify said information independently.

www.fitzgeraldgroup.com