

For Sale | 1036 NE 43rd Court
Oakland Park, FL 33334



Owner/User Opportunity
\$710,000.00

Built in 1973

Building Area 4,150 SF

Land Area 6,250 SF

Solid Concrete Block and Stucco Construction

50 feet of frontage directly on NE 43rd Court

Zoned: I-1

ASKING \$710,000.00



The Fitzgerald Group | Fort Lauderdale
1800 Eller Drive | Suite 212
Fort Lauderdale, FL 33316
www.fitzgeraldgroup.com

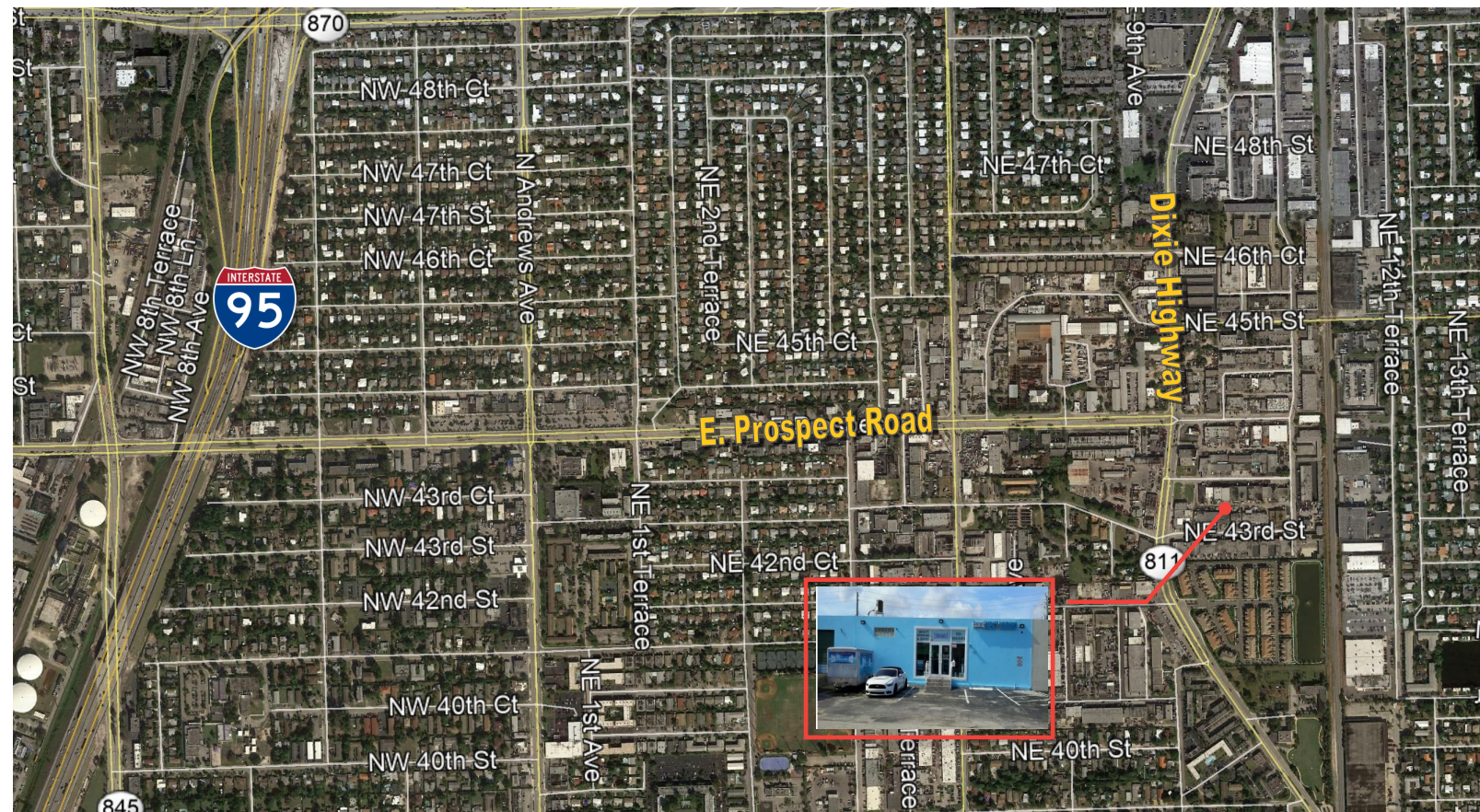
Adam P. Von Romer
O: 954.760.9300 | M: 954.495.1818
adam@fitzgeraldgroup.com

Michael Martin
O: 561.620.2800 | M: 954.817.7038
mike@fitzgeraldgroup.com

www.fitzgeraldgroup.com

For Sale

1036 NE 43rd Court
Oakland Park, FL 33334



CENTRALLY LOCATED | CONVENIENT HIGHWAY ACCESS

- The property is currently configured as an impact window and door distribution facility with showroom in the front and distribution in the rear.
- 1 dock high door
- 10' x 10' bay door
- 17% A/C finished area (715 ±/SF)
- Concrete ramp
- 2.8 x 50' concrete dock
- 11 - 12' ceiling height
- Single phase electric
- Restroom equipped with shower
- Steel bar joist roof

Adam P. Von Romer
O: 954.760.9300 | M: 954.495.1818
adam@fitzgeraldgroup.com

Michael Martin
O: 561.620.2800 | M: 954.817.7038
mike@fitzgeraldgroup.com

The Fitzgerald Group | Fort Lauderdale
1800 Eller Drive | Suite 212
Fort Lauderdale, FL 33316
Www.fitzgeraldgroup.com



THE FITZGERALD GROUP
COMMERCIAL REAL ESTATE

Any information herewith is obtained from sources we consider reliable. However, we are not responsible for misstatement of facts, errors, omissions, prior sale, and withdrawal from market modification of mortgage commitment, terms and conditions or change in price without prior notice. The information supplied herein is for informational purposes only and shall not constitute a warranty of assurance that said information is correct. Any person intending to rely upon the information supplied herein should verify said information independently.