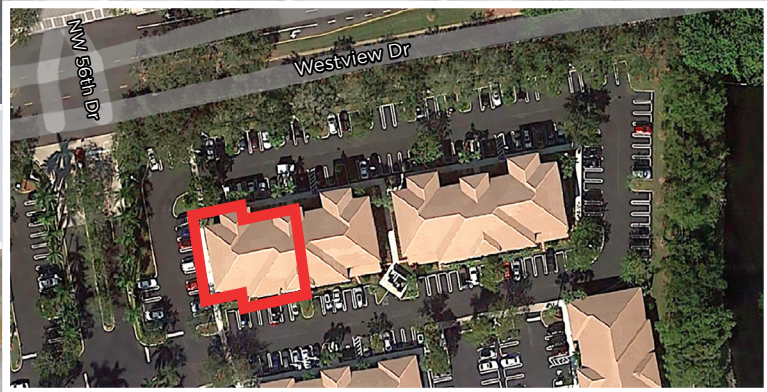


DENTAL OFFICE CONDO

CORAL SPRINGS PROFESSIONAL CAMPUS

FOR
SALE



5401 N UNIVERSITY DRIVE #3-101,
CORAL SPRINGS FL 33067



- Zoned B-2 / Corne Unit
- Dental Office Condo
- Corner Unit
- 3 Separate Entry Doors
- Reception Area
- Waiting Area
- 5 Exam Rooms
- 2 Private Medical Office w/Water
- 2 Bathroom / Lots of Windows
- Kitchen Area
- Nurse Station
- Ample Parking

2,054 ±SQFT
Business
\$399,000
Real Estate
\$499,000



JOE PELAYO / CCIM, SIOR
trec@joepelayo.com
954.224.8773



CALL US!
TREC
Total Real Estate
Consultants Inc.
www.trecfl.com
954.341.3294

GEORGE PELAYO
georgetrec@joepelayo.com
954.482.1330

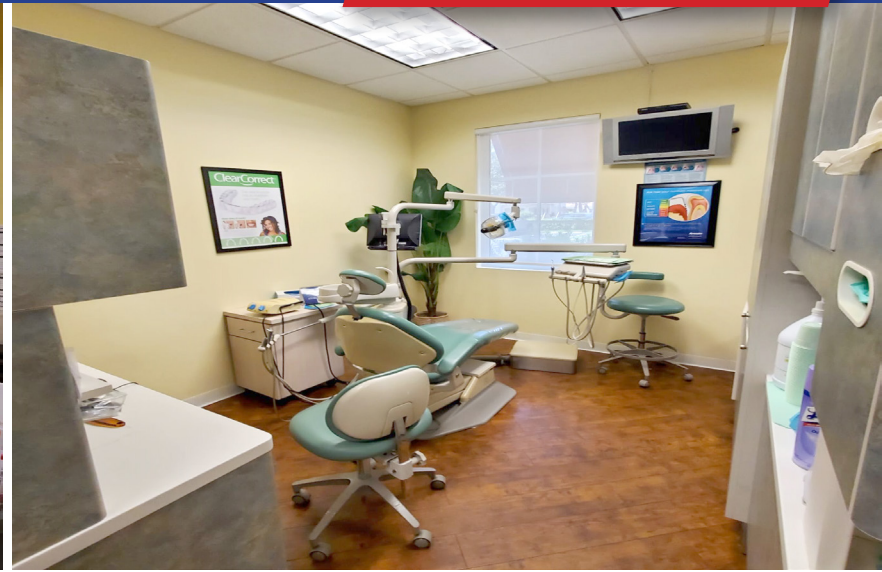


Note: This offering subject to errors, omissions, prior sales or withdrawal without notice.

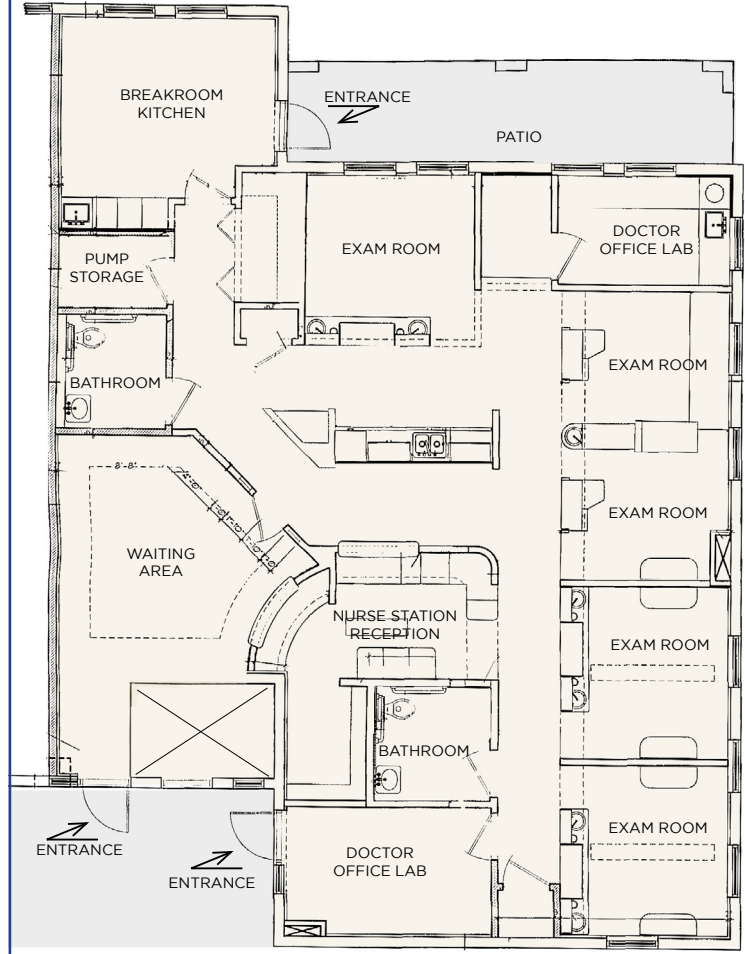
DENTAL OFFICE CONDO

CORAL SPRINGS PROFESSIONAL CAMPUS

FOR
SALE



5401 N UNIVERSITY DRIVE #3-101,
FLOORPLAN



JOE PELAYO / CCIM, SIOR
trec@joepelayo.com
954.224.8773



CALL US!
TREC
Total Real Estate
Consultants Inc.
www.trecfl.com
954.341.3294

GEORGE PELAYO
georgetrec@joepelayo.com
954.482.1330



Note: This offering subject to errors, omissions, prior sales or withdrawal without notice.