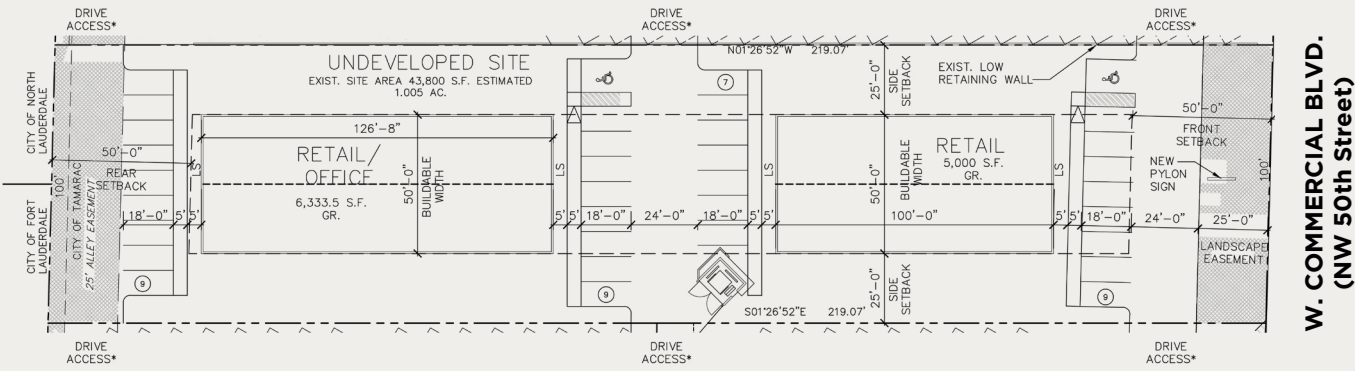


**3707 W Commercial Blvd, Tamarac, FL 33309**



# LAND FOR SALE



## TRAFFIC COUNTS

W Commercial Blvd **60,000** Cars per day

- **ZONED MUC:** Mixed Use Commercial
- Centrally Located Within Minutes of Major Highways: I-95 & Turnpike
- Near to Inter Miami CF Stadium
- Seller will contribute to cost of fill required for a specific site use by the buyer.

## DEMOGRAPHICS

Population	1 Mile	3 Mile	5 Mile
2020	16,000	200,000	500,000
2024	17,000	210,000	530,000

**1.02 +/- ACRES**  
44,500 ±SQFT

**\$1,049,000**



**JOE PELAYO / CCIM, SIOR**  
 ✉ [trec@joepelayo.com](mailto:trec@joepelayo.com)  
**954.224.8773**



**TREC**  
 Total Real Estate Consultants Inc.  
[www.trecfl.com](http://www.trecfl.com)  
 954.341.3294

**GEORGE PELAYO**  
 ✉ [georgetrec@joepelayo.com](mailto:georgetrec@joepelayo.com)  
**954.482.1330**



*Note: This offering subject to errors, omissions, prior sales or withdrawal without notice.*

# 3707 W Commercial Blvd, Tamarac, FL 33309

Allowed uses:

## MUC - Mixed Used Commercial



Restaurants



Retail



Multi-Family



Assisted Living Facilities



Fitness / Recreation



Hotels / Bed and Breakfast



Business & Professional Offices



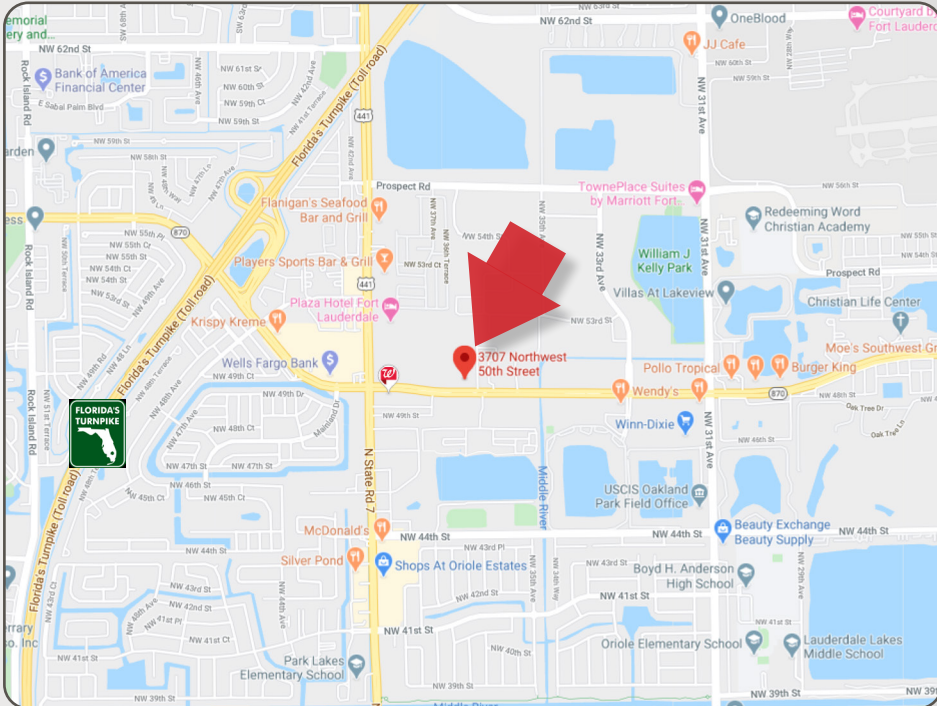
Community & Cultural



Medical, Urgent Care

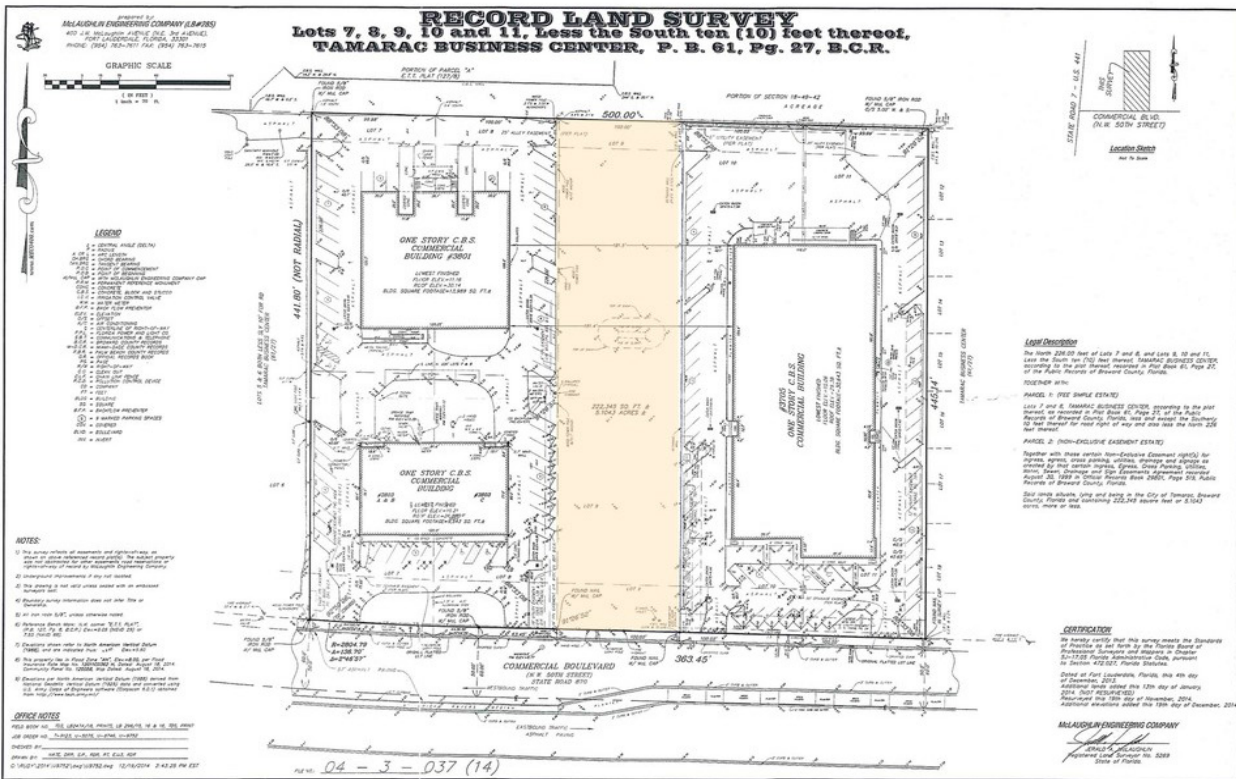


Veterinary Office



More

<http://bit.ly/2Qp3sVU>



     Vacant Parcel - W. Commercial Blvd.



**JOE PELAYO / CCIM, SIOR**  
 ✉ [trec@joepelayo.com](mailto:trec@joepelayo.com)  
**954.224.8773**



**TREC**  
 Total Real Estate  
 Consultants Inc.  
[www.trecfl.com](http://www.trecfl.com)  
 954.341.3294

**GEORGE PELAYO**  
 ✉ [georgetrec@joepelayo.com](mailto:georgetrec@joepelayo.com)  
**954.482.1330**



*Note: This offering subject to errors, omissions, prior sales or withdrawal without notice.*