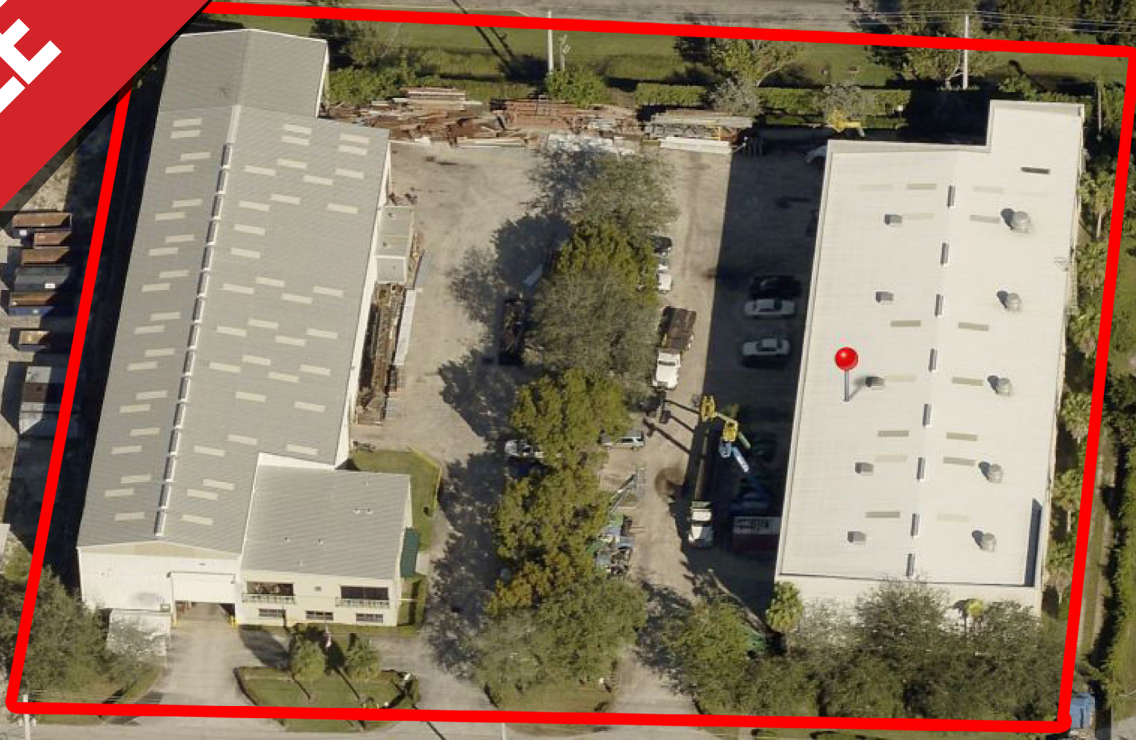


FOR SALE



2 FREESTANDING WAREHOUSES

1861-1891 NW 33rd Court, Pompano Beach, FL 33064



Office: **5,000** ± SQ FT



Warehouse **36,000** ± SQ FT



Lot size **100,000** ± SQ FT



7 Roll-up Doors (1891)

6 Roll-up Doors (1861)



Year Build **2004** (1861)



Year Build **1990** (1891)

MOTIVATED SELLER

- Zoned I-1X
- Great Opportunity for Owners/Investors
- Ideal Commercial Location
- Warehouse Designed for Overhead Cranes
- Metal/Concrete Block Construction
- 30 FT Clear Ceiling Height
- Between I-95 & Turnpike

TOTAL SQ FT:	± 41,000
PRICE:	\$5,689,000



<http://bit.ly/2Gb1brt>



JOE PELAYO / CCIM, SIOR
 ✉ trec@joepelayo.com
 954.224.8773



TREC
 Total Real Estate
 Consultants Inc.
www.trecfl.com
 954.341.3294

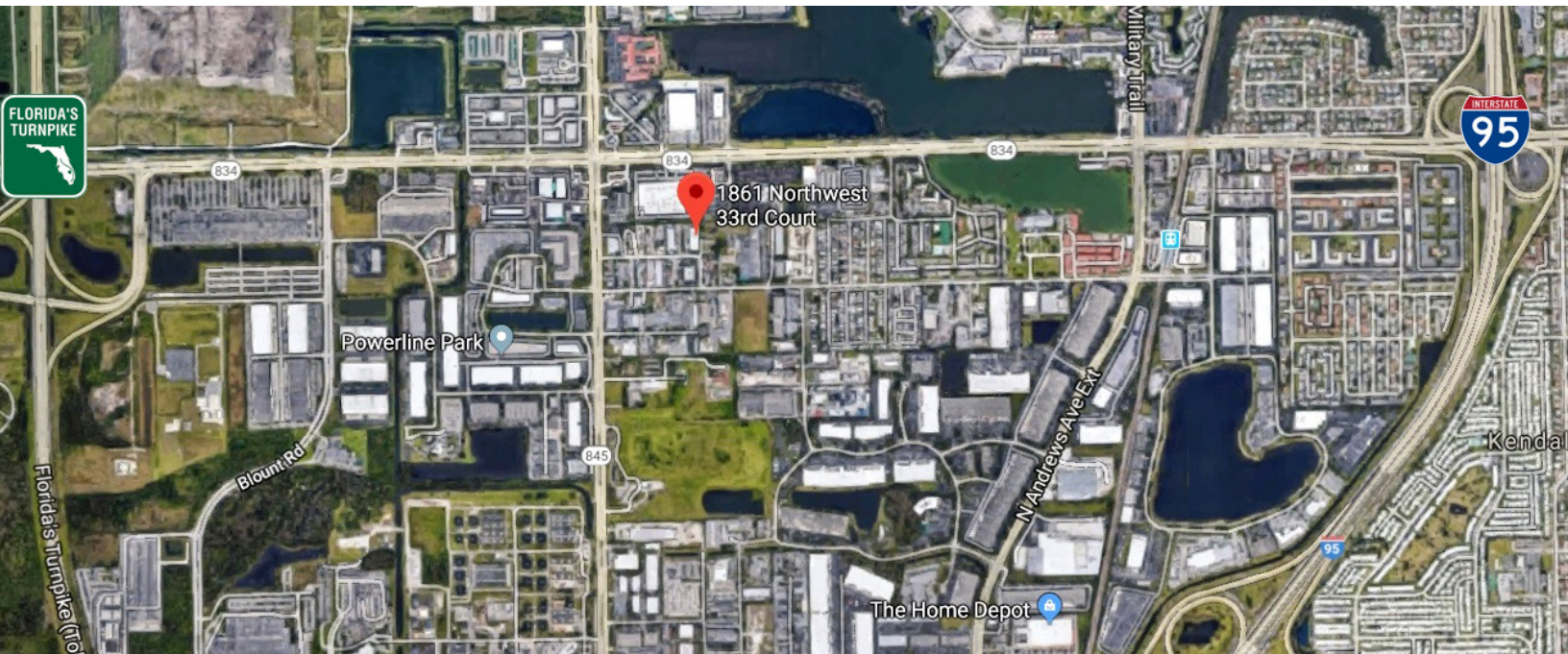
GEORGE PELAYO
 ✉ georgetrec@joepelayo.com
 954.482.1330



Note: This offering subject to errors, omissions, prior sales or withdrawal without notice.



OFFICE WAREHOUSE MANUFACTURING IN SOUTH FLORIDA



JOE PELAYO / CCIM, SIOR
✉ trec@joepelayo.com
954.224.8773



TREC
Total Real Estate
Consultants Inc.
www.trecfl.com
954.341.3294

GEORGE PELAYO
✉ georgetrec@joepelayo.com
954.482.1330



Note: This offering subject to errors, omissions, prior sales or withdrawal without notice.