

FOR SALE FREESTANDING WAREHOUSE

1891 NW 33rd Court, Pompano Beach, FL 33064

- 5,000 ± SQ FT Office
- 18,000 ± SQ FT Warehouse
- 50,000 ± SQ FT Lot size
- 2 Cranes 7.5 tons / 1 Crane 2.5 tons
- Year Built 1990
- Great Opportunity for Owners/Investors
- Ideal Commercial Location
- 2 Buildings to be Sold Together
- Multiple Award Winner for Quality & Design
- Zoned I-1X (Metal/Concrete Block Construction)

23,000 ± SQ FT

\$3,250,000



video
tour



JOE PELAYO / CCIM, SIOR

✉ trec@joepelayo.com

954.224.8773

TREC

Total Real Estate
Consultants Inc.
www.trecfl.com
954.341.3294

CHRISTIAN PERLINI / PA

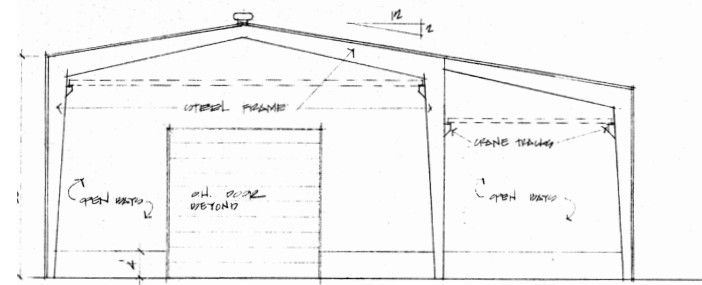
✉ cperlini@icloud.com

954.444.8690



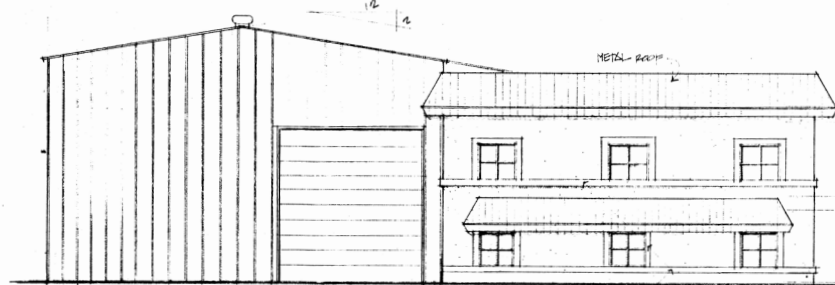
Note: This offering subject to errors, omissions, prior sales or withdrawal without notice.

1891 NW 33rd Court, Pompano Beach, FL 33064



CROSS SECTION THRU BUILDING

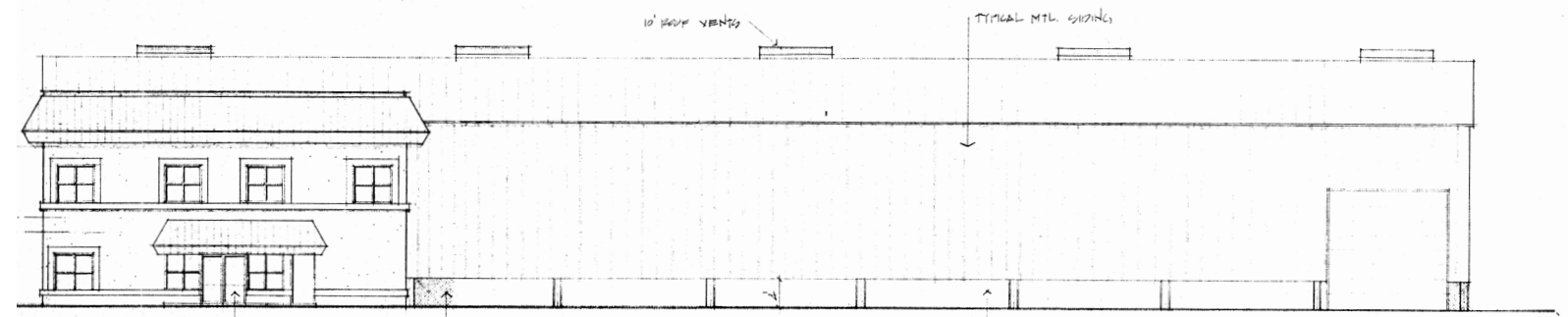
SCALE: 1/8" = 1'-0"



SOUTH ELEVATION

FRONT OFFICE BUILDING

SCALE: 1/8" = 1'-0"



EAST ELEVATION

SCALE: 1/8" = 1'-0"



JOE PELAYO / CCIM, SIOR
✉ trec@joepelayo.com
954.224.8773

TREC
Total Real Estate
Consultants Inc.
www.trecfl.com
954.341.3294

CHRISTIAN PERLINI / PA
✉ cperlini@icloud.com
954.444.8690



Note: This offering subject to errors, omissions, prior sales or withdrawal without notice.