

Double Unit Office for Sale - Altamonte Springs

994 Douglas Ave, Altamonte Springs, FL 32714



Listing ID: 30413053
Status: Active
Property Type: Office For Sale
Office Type: Business Park, Medical
Size: 2,461 SF
Sale Price: \$410,000
Unit Price: \$166.60 PSF
Sale Terms: Cash to Seller



Overview/Comments

Double Unit Office for Sale, located in the Raintree office Park, this unit has a large receptionist office, 6 separated offices, a conference room, 2 bathrooms, kitchen, and large open area to use as needed. Most offices have windows with blinds and easy clean carpet. Great for Medical, Law, Title Company, any Service business. "Just freshly painting in July 2019, will upload new photos soon".

The main office area is hardwood laminate flooring. There are 6 offices, two restrooms, conference room, an upstairs loft and two closets. The conference room is cornered with windows on two sides viewing mature landscaping. The bonus loft area of 220 sqft. with built in shelves and cabinets great for storage or an additional office. There is ample parking shared with medical, technology, and financial service companies.

Buyer should verify sizes

Interior Space Includes Private Offices: 11.5 x 10.5, 9.5 x 10.5, 10 x 14, 12 x 12.5, 8 x 12, 8.5 x 12. Conference Room: 12 x 16 Bonus Loft Area 22 x 10 Reception Area 9.5 x 10 Full Kitchen and 2 Bathrooms

More Information Online

<http://www.catylist.com/listing/30413053>

QR Code

Scan this image with your mobile device:



General Information

Taxing Authority:	Seminole County	Building Name:	RainTree Office Park
Tax ID/APN:	11-21-29-511-0000-2010	Class of Space:	Class B
Is Condo?:	Yes	Gross Building Area:	2,461 SF
Office Type:	Business Park, Medical, Office Building	Building/Unit Size (RSF):	2,461 SF
Zoning:	G0	Usable Size (USF):	2,461 SF
Property Use Type:	Investment, Vacant/Owner-User	Sale Terms:	Cash to Seller

Area & Location

Property Visibility: Good
Highway Access: Just off I-4 and SR 434. Directions: 1-4 to SR 434 West to Douglas south approx 1 mile to Raintree Office Park.
Site Description: This is a six building office park in the Raintree Office Condo development.

Building Related

Total Number of Buildings:	6	Passenger Elevators:	0
Year Built:	1988	Freight Elevators:	0
Construction/Siding:	Block, Stucco	Heat Source:	Central
Exterior Description:	Stucco		

Land Related

Zoning Description: G0
Water Service: Municipal
Sewer Type: Municipal

Location

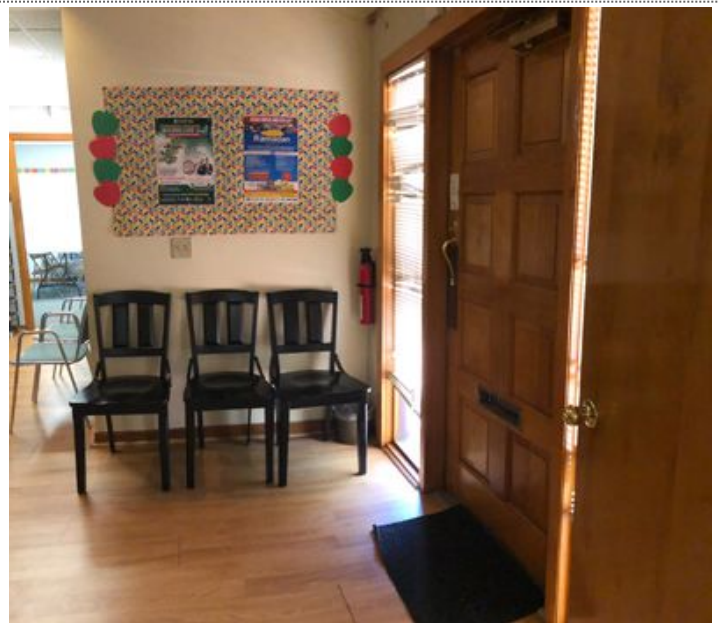
Address: 994 Douglas Ave, Altamonte Springs, FL 32714
County: Seminole
MSA: Orlando-Kissimmee-Sanford



Property Images



OR4B1007-resize



2nd Entrance (Notused)



Backlobby



Kitchen



FileRoom



Lobby View



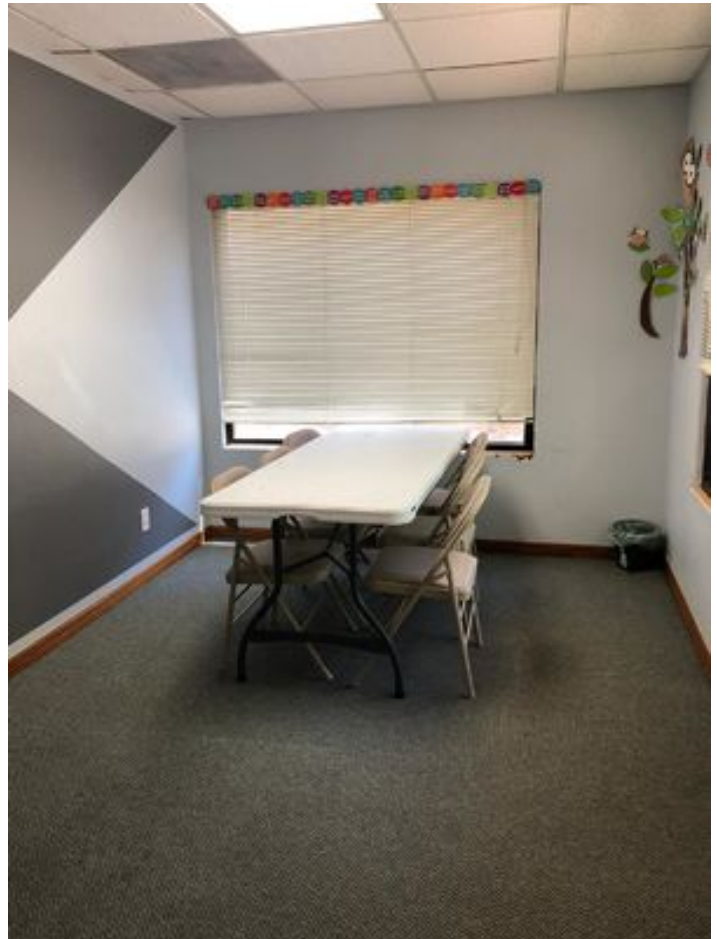
Hall



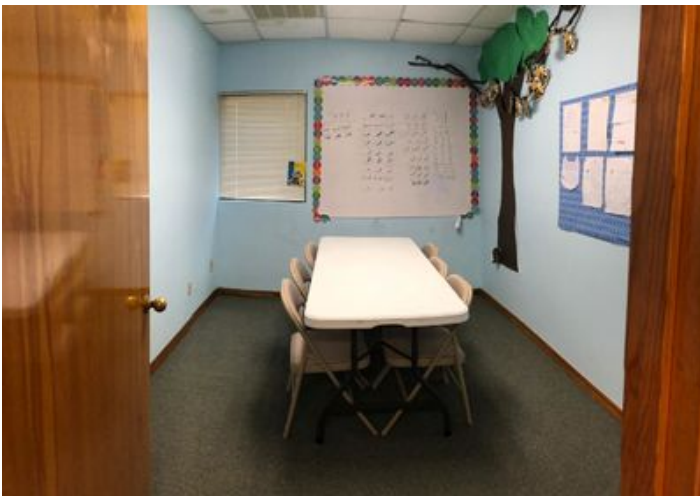
MainEntrance



Office



Office3



Office2



Office4a



Office5



Open Area



Office6



Open Area2



Office7



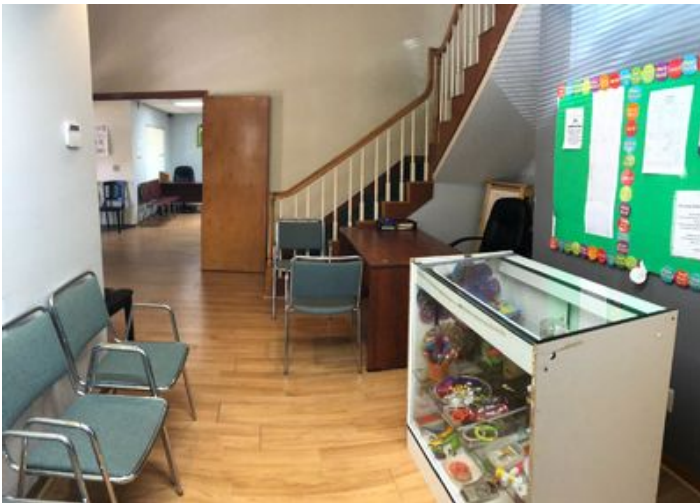
Open Area3a



OpenAreaview



Restroom1



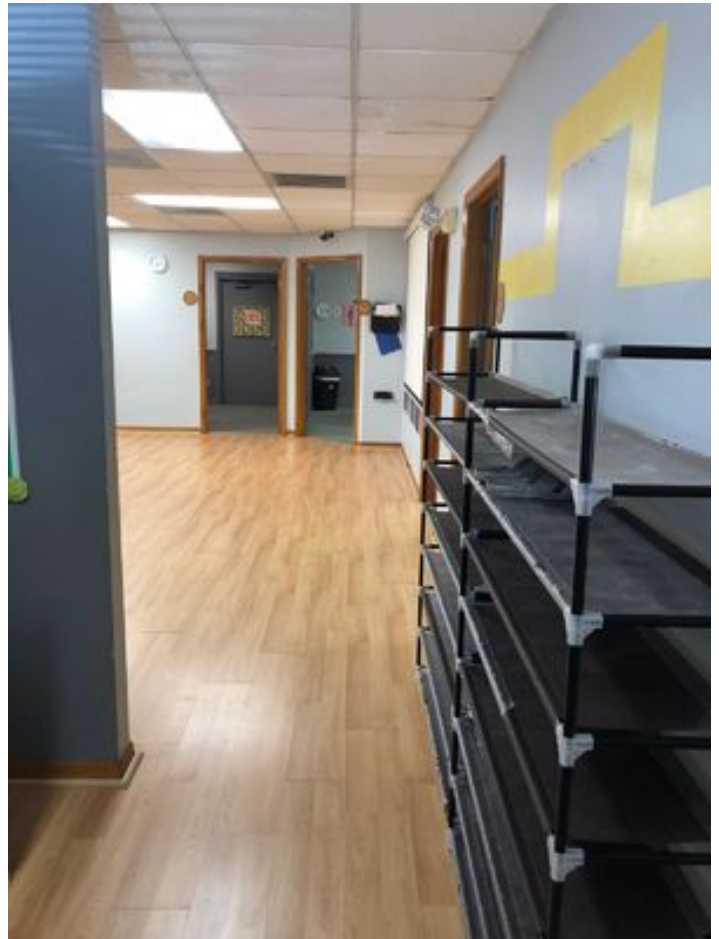
Other OpenArea



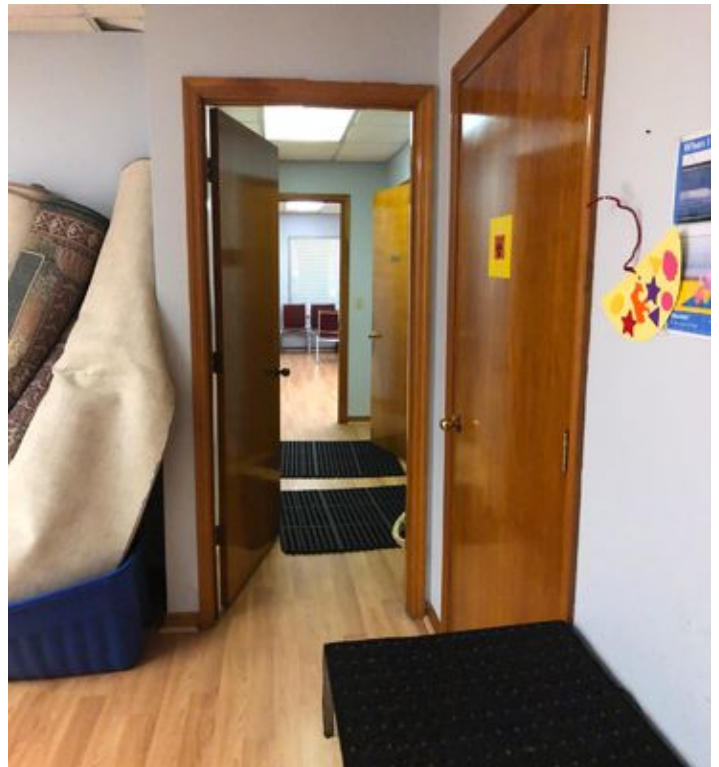
Restroom2



WhatsApp Image 2019-04-16 at 1.08.06 PM



WhatsApp Image 2019-04-16 at 1.08.07 PM



WhatsApp Image 2019-04-16 at 1.08.42 PM (1)



WhatsApp Image 2019-04-16 at 1.08.42 PM



WhatsApp Image 2019-04-16 at 1.08.46 PM (1)



WhatsApp Image 2019-04-16 at 1.08.45 PM



0R4B1023

Property Contacts



Yvette Iturrino
Central FL Realty Group
407-731-5552 [M]
407-392-2201 [O]
yvette@cflrg.com