



# COMMERCIAL REAL ESTATE CONSULTANTS

3360 N. GOLF COURSE ROAD, TOOELE UTAH

## LAND FOR SALE IN TOOELE



### PROPERTY INFORMATION

- 26.67 Acres Available
- Current Zoning : RR-5
- Neighbors Overlake Estates  
Mixed Use Development

### DEMOGRAPHICS

	1 Mile	3 Mile	5 Mile
Total Population	2,003	15,229	47,869
Total Households	559	4,080	14,540
Avg. Household Inc.	\$85,404	\$81,538	\$65,918

### TRAFFIC COUNTS

UT-36 : 29,583 Average Annual Daily Traffic

**SALE PRICE : \$400,000.00**

**801.617.1700**

**DEREK KLOPFER**

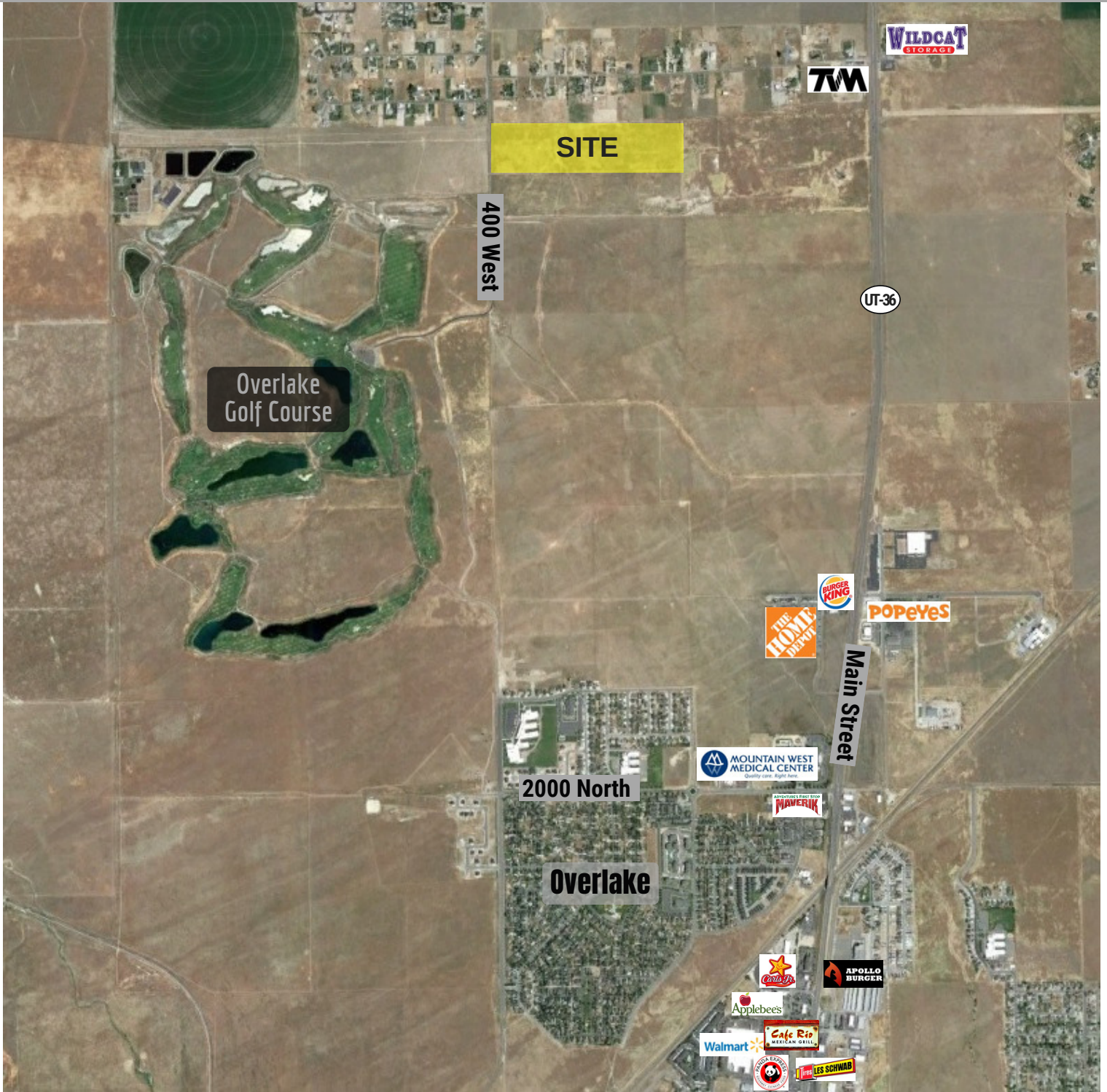
derek.klopfers@crcnationwide.com





# COMMERCIAL REAL ESTATE CONSULTANTS

3360 N. GOLF COURSE ROAD, TOOELE UTAH



**CONTACT: 801.617.1700**

**DEREK KLOPFER**  
derek.klopfere@crcnationwide.com